



Create New Catalog Asset

Applies to:	SmartZone Users
Objective:	If you have an IT asset in the data center that doesn't exist in the SmartZone catalog, add the asset and its images to the catalog
Documentation Reference:	SmartZone DCIM User Manual – Catalog – Add Devices and Images to SmartZone DCIM Catalog
Pre-Requisites:	Front and rear images of the asset.

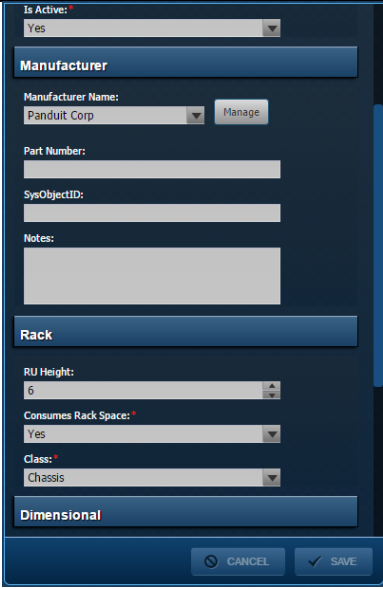
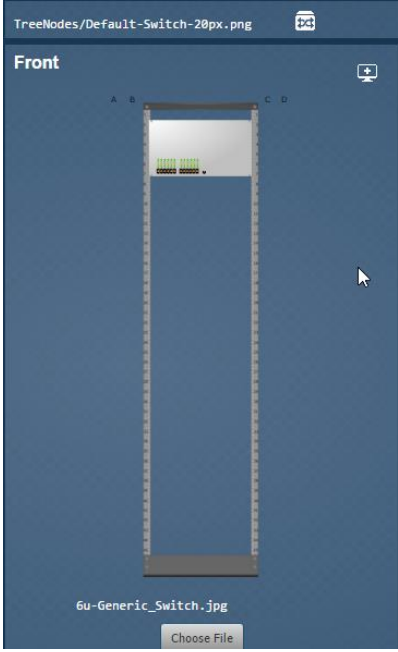
Description

This procedure allows SmartZone users with the proper permissions to add an asset to the SmartZone DCIM catalog.

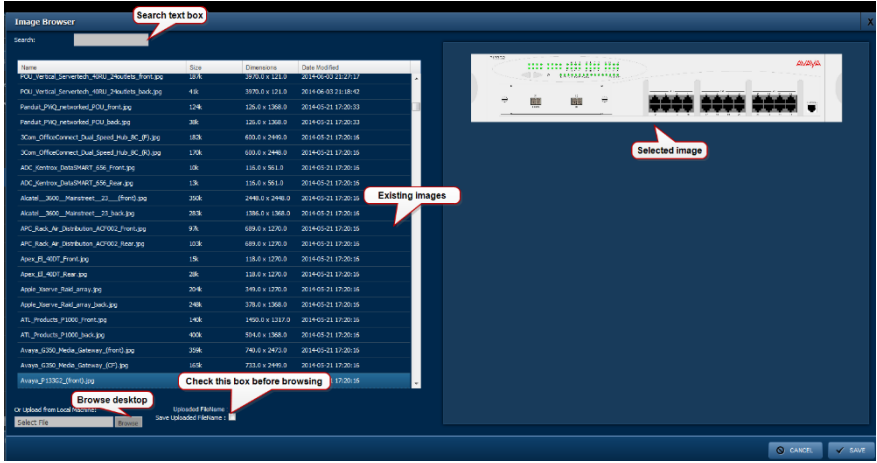
Performing the Procedure

This procedure uses a switch as an example of the moved asset.

Step	Instruction	Graphic	Result
1	At the SmartZone Catalog, click the category for the asset.		The text box for adding an asset displays.

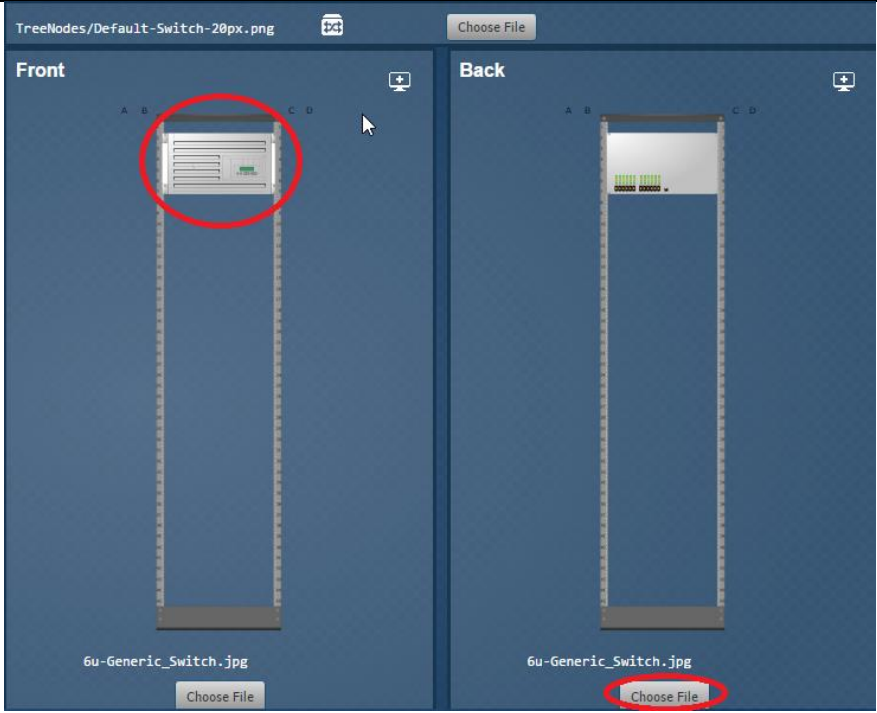
<p>2</p>	<p>Enter data for the required fields (denoted by red asterisks). Make sure to enter the correct Rack Unit height. Then click Save.</p>	 <p>The screenshot shows a configuration form with the following sections: <ul style="list-style-type: none"> Is Active: Yes Manufacturer: Manufacturer Name: Panduit Corp (with a Manage button), Part Number, SysObjectID, and Notes. Rack: RU Height: 6, Consumes Rack Space: Yes, Class: Chassis. Dimensional: (empty section) Buttons for CANCEL and SAVE are at the bottom.</p>	<p>The new device will display at the bottom of the category's list of devices in the Catalog, and the default image for the device will display.</p>
<p>3</p>	<p>To change the default image to the true image of the asset, click the Choose File button below the Front default image.</p>	 <p>The screenshot shows an image browser window titled 'TreeNodes/Default-Switch-20px.png'. It displays a 'Front' view of a rack unit with a placeholder image. A 'Choose File' button is located at the bottom of the window.</p>	<p>The Image Browser popup window displays, showing the default image that SmartZone DCIM assigned to the device. (SmartZone assigns an image that matches the number of RUs you specified.)</p>

4 To add a new image, click **Browse** next to the **Or Upload from Local Machine** text field. Click the **Save Uploaded Filename** check box, and then click **Save**.



The new image displays in the Front rack view for the asset.

5 To add a new Back image, click **Choose File** under the Back image and repeat Step 4 above.



The asset is ready to be added to the Data Center via SmartZone.

End of Steps

End State

The asset and its images are successfully added to the Catalog, and the new asset is ready to be added to the data center.