



Logging into the PVIQ Panel Manager

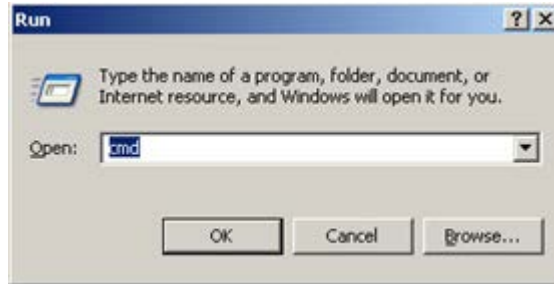
Applies to:	SmartZone panel manager
Objective:	Log into PVIQ Panel Manager using the steps provided.
Pre-Requisites:	<ul style="list-style-type: none">• Install and connect the PVIQ hardware as indicated in the System Hardware Installation Instructions• Make sure that you have completed all Firmware Preparations as instructed in Technical Reference # TR44• Make sure that you have access to a DHCP server

Performing the Procedure

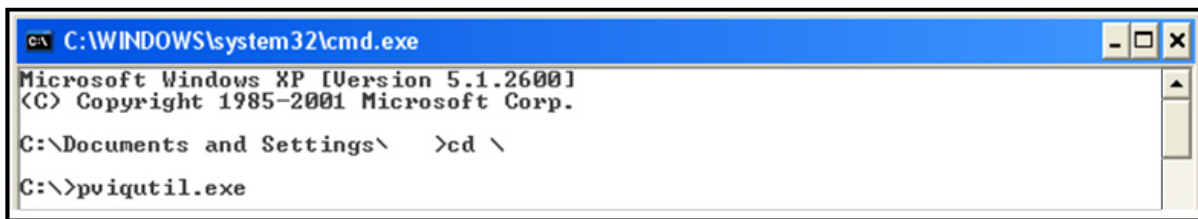
1. Ensure that the first Panel Manager (PM) of the Ethernet daisy chain is connected to a subnet with an available DHCP server.
2. Ensure that the laptop's Ethernet port is set to obtain an IP address automatically (DHCP)—see your Windows Help files for more info.
3. Connect the laptop computer to the available RJ45 port on the last PM of the Ethernet daisy chain.
4. Open a Command window (**cmd.exe**) on the PC by navigating to the Microsoft® Windows® Start icon and selecting the Run icon.



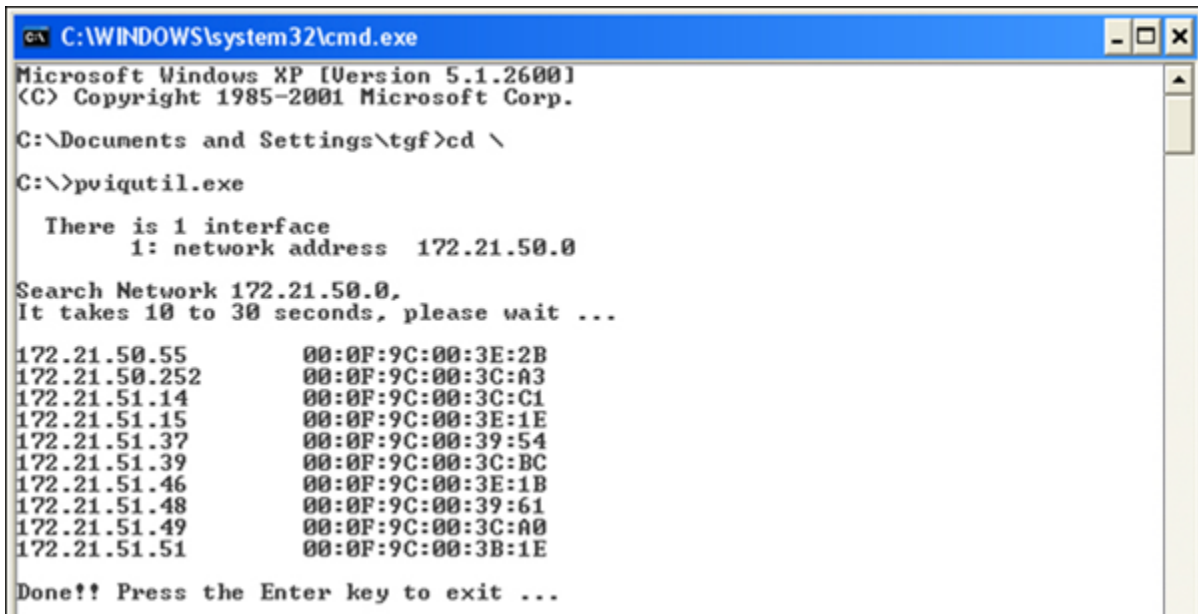
5. In the dialog box, type **cmd** (see below) and then hit the OK button.



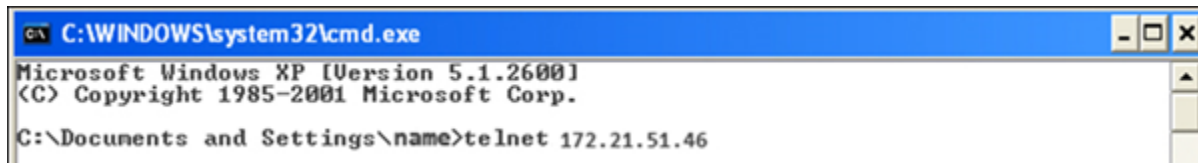
6. Copy the pviqutil.exe to the C drive (i.e. c:\).
7. Execute the pviqutil.exe function to determine the MAC to IP mapping.
8. Open a Command window (**cmd.exe**) on the PC as instructed in steps 4 and 5 (above).
9. Execute the pviqutil.exe function to determine the MAC to IP mapping by typing pviqutil.exe at the C:> prompt (pviqutil.exe can be found on the Installation CD).



10. The screen will display the necessary MAC and IP mapping information (as shown below).



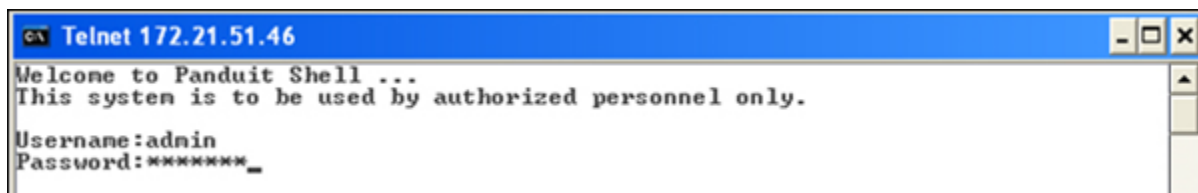
11. Telnet into the PViQ device (i.e. telnet 172.21.51.46).



```
C:\WINDOWS\system32\cmd.exe
Microsoft Windows XP [Version 5.1.2600]
(C) Copyright 1985-2001 Microsoft Corp.
C:\Documents and Settings\name>telnet 172.21.51.46
```

12. At the login prompt, use the following to bring up the Welcome Screen.

- **login:** admin
- **password:** panduit



```
Telnet 172.21.51.46
Welcome to Panduit Shell ...
This system is to be used by authorized personnel only.
Username:admin
Password:*****_
```

End State

You have successfully logged into the PVIQ Panel Manager.