

MP200 PRINTER

Quick Reference Card



Printer Tech Support 1-866-871-4571
GA-TECHSUPPORT@PANDUIT.COM
Rev. 0.0 – 1/20/21



1

MP200 Printer and Accessories

Part No.	Description
MP200	Includes MP200 printer, 1 cassette of T100X000VPM-BK.
MP200-KIT	Includes MP200 printer, 1 cassette of T100X000VPM-BK, hard carrying case, Li-Ion rechargeable battery pack, magnetic attachments, USB cable, and power adapter (MP-ACS-1). For use in North America
MP200/E-KIT	Includes MP200 printer, 1 cassette of T100X000VPM-BK, hard carrying case, Li-Ion rechargeable battery pack, magnetic attachments, USB cable, power adapter (MP-ACS-1) and international power cord(s). For use outside of North America
MP-ACS-1	120-240 VAC universal power adapter module with power cord for North America.
MP-BATT	Replacement Li-Ion rechargeable battery pack
MP200-CASE	Replacement hard carrying case

MP200 Label Cassettes

- Continuous label materials:
 - Self-laminating Vinyl Tape, Heat Shrink Tubing
 - Nylon Cloth Tape, Polyolefin Tape
 - Colored Vinyl Tape, Clear Polyester Tape
 - Magnetic Tape
- Compatible for use with Panduit MP Cassette Continuous Label Material up to 1" wide

2

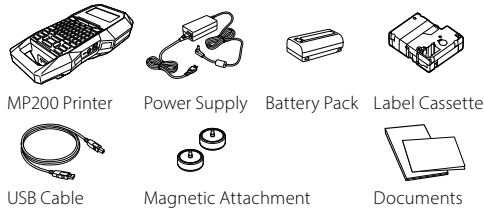
Label Cassette Types

Label Material	Example Part No.	Typical Application
Self-Laminating Vinyl Tape	S000X100VAM	Wire/Cable Marking
Heat Shrink Tubing	H000X044H1M	Wire/Cable Marking
Nylon Cloth Tape	T100X000C1M-BK	Wire/Cable Marking
Polyolefin Tape	T038X000FJM-BK	Terminal Block Labeling
Colored Vinyl Tape	T100X000VPM-BK	Safety/Facility and General Identification
Clear Polyester Tape	T100X000YKC-BK	Safety/Facility and General Identification
Magnetic Tape	T100X000MXM-BK	Safety/Facility and General Identification

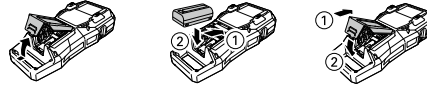
3

Getting Started

- MP200-KIT Included Items



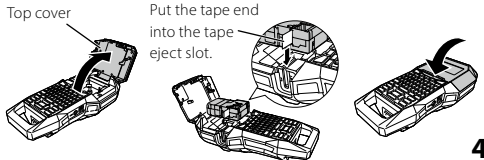
- Install Li-ion battery



- Charge Li-ion battery

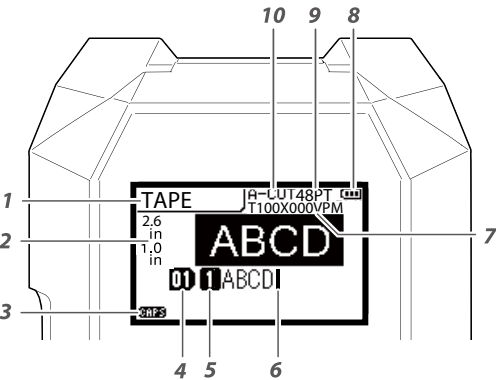


- Install label cassette



4

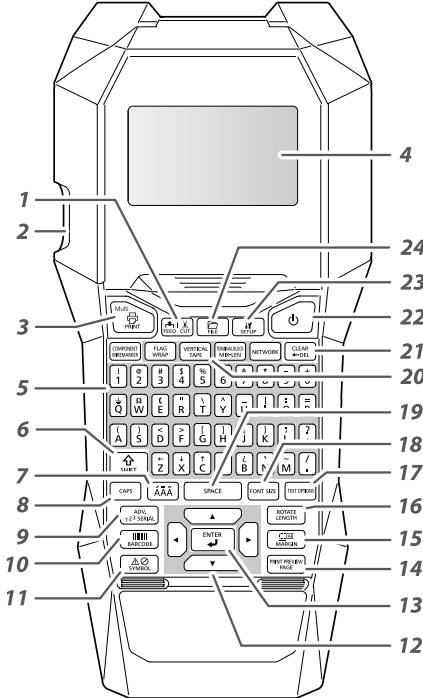
MP200 Display



1. Label Mode
2. Current label length & width
3. CAPS Lock on
4. Page Number
5. Line Number
6. Cursor
7. Label Part number
8. Battery Life
9. Font Size
10. Cutter Setting

5

MP200 Keypad Functions

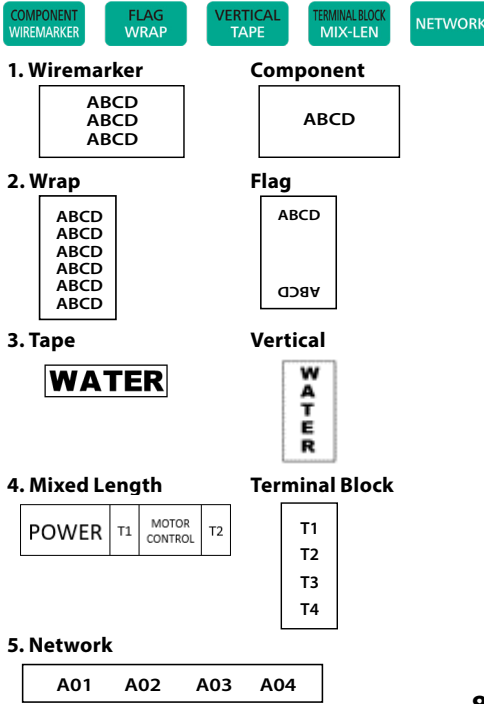


6

1. Feed and cut the label material
2. Label exit slot
3. Print a label
4. Display Screen
5. Number and letter keys
6. Shift/secondary functions
7. Enter a character with an accent
8. CAPS lock
9. Create a serialization
10. Create a barcode
11. Create a symbol
12. Directional arrow keys
13. Enter key
14. Add a page/print preview
15. Set label margins
16. Set tape length/rotate text
17. Text options key
18. Change font size
19. Space bar
20. Label mode keys
21. Delete/Clear key
22. Power on/off
23. Setup menu key
24. File save and recall

7

Label Modes



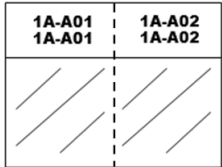
8

HOW TO: Serialization



- 1. Type "1A-A"
- 2. Press the SERIAL key
- 3. Enter a start value of 01, end value of 02, and increment value of 1
- 4. Press ENTER
- 5. Press PRINT

Example using S000X100VAM, self-laminating wire/cable markers:



Symbols



- 1. Press the SYMBOL key
- 2. Select the symbol group named WARNING
- 3. Select the symbol on the first row
- 4. Press ENTER
- 5. Press SPACE
- 6. Type "CAUTION"
- 7. Press PRINT

Example using T100X000VXM-BK, black on yellow continuous vinyl tape:



Over 20 categories of symbols for electrical, network, audio visual, laboratory, arc flash, PPE, Prohibition, arrows, and more.

Hundreds of individual images included.



Barcodes



Code 39

- 1. Press the BARCODE key
- 2. Scroll to CODE 39 and press ENTER
- 3. Select Medium Width
- 4. Select 2.5 Ratio
- 5. Select check digit OFF
- 6. Type text ABC
- 7. Press ENTER
- 8. Press PRINT



QR Code

- 1. Press the BARCODE key
- 2. Scroll to QR CODE and press ENTER
- 3. Select Symbol Size
- 4. Select 7% ECC Level
- 5. Type text WWW.PANDUIT.COM
- 6. Press ENTER
- 7. Press PRINT



9 different barcode styles included

Print from Easy-Mark Plus Software

- Connect the MP200 printer to a computer with USB cable.
- Print from Easy-Mark Plus Labeling Software. Easy-Mark Plus is sold separately and includes MP200 driver.
 - Easy-Mark Plus on disc: EMPLUS-CD
 - Easy-Mark Plus on USB flash drive: EMPLUS-2GO
 - Easy-Mark downloadable version: EMPLUS-DL



Other Functions

- PRINT – Print labels
- MULTI – Adjust print options, print copies
- FEED | CUT – Feeds label material without printing. Cuts label after feeding.
- CLEAR – Clear screen, remove formatting
- FILE – Save or recall label files
- FONT SIZE – Change the character size
- TEXT OPTIONS – Change the font styling
- MARGIN – Change the label margin
- LENGTH – Adjust the label length
- ROTATE – Rotate the text
- PAGE – Add a new page to a label design
- PRINT PREVIEW – View the label before printing

Setup Menu



- Auto Cut – Turn the Automatic Cut function ON or OFF. If Auto Cut is ON, then select Half Cut ON or OFF. Half Cut cuts through the label but not the liner.
- Print Density – Raise or lower the print density/darkness of print
- Drop Stop – Set the drop stop function to ON or OFF. Drop Stop pauses printing until the cut label has been removed from printer exit.
- Backlight – Turn backlight function ON or OFF
- Language – Select the preferred language. 13 languages are available: Dansk, Deutsch, English, Español, Français, Italiano, Nederlands, Norsk, Português – BR, Português – EU, Suomi, Svenska, Türkçe
- Inch:cm – Change the unit of measure between inches and centimeters.
- Version – Display the current operating system version number

Additional Support

Visit www.panduit.com

Free Downloads

- Path: Support / Download Center / Software
- Firmware Printers
- Detailed Operator's Manual
 - Replacement Quick Reference Card
 - Product Bulletin
 - Product specification and safety information.

Warranty Registration

Path: Support / Product Registration

Related Products

- MP Label Cassettes
- MP75 Printer
- MP100 Printer
- MP300 Printer
- Mobile Labeling Apps for Android and iOS
- Easy-Mark Plus Labeling Software

Note: Please refer to the instruction label in cassette compartment for the printer head cleaning.

Global Customer Service

- CS@PANDUIT.COM
- U.S. and Canada: 800-777-3300
- Europe, Middle East, and Africa: 44.20.8601.7200
- Latin America: 52.33.3777.6000
- Asia Pacific: 65.6305.7575

Panduit Technical Support

- GA-TECHSUPPORT@PANDUIT.COM
- U.S. and Canada: 1-866-871-4571
- Europe: 31.546.580.452
- Latin America: 52.33.3777.6000
- Asia Pacific: 65.6379.6700

Part Number: MP200-QRC-EN, Rev. 0.0
DWG Number: 00818EBA