
Outside Plant Broadband Construction Solutions



PANDUIT®

Data is the New Utility

Consumer households demand it more than both landline telephone and pay TV. Governments want it to strengthen their communities. Businesses require it to access consumers.

Only fiber optic technology can meet the reach, bandwidth, and efficiency requirements answering this demand. Just as electrification was brought to rural communities in the 1930s, the challenge today is to bring fiber network infrastructure to those without access to effective broadband data services.

With the growing demand for broadband comes the need for solutions that help contractors deploy the network. Panduit brings 50 years of experience in outside plant applications that help contractors work efficiently, and to ensure the whole system performs reliably.



Bundling and Securing

PAGE 4

Harsh Environment Identification

PAGE 5

Grounding

PAGE 5-6



Enclosures
PAGE 6

**Stainless Steel
Pole Mounting
Solutions**
PAGE 7

**Optical
Fiber**
PAGE 7



Bundling and Securing

One-Piece Aerial Support Ties

Aerial Support Ties with integral spacer for support strands are designed to keep equipment and cable clear of pole hardware. These ties and spacers together reduce inventory costs and allows for faster installation. They are releasable and re-usable, and do not require install tools. For use in outdoor environments, made of weather-resistant polypropylene.



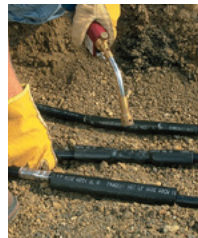
UV Corrugated Loom Tubing

Corrugated Loom Slit Wall Tubing protects cables from impact and abrasion. Features a slit for easy installation onto a bundle of wires or a pre-assembled harness assembly, increasing productivity. Hold in place with cable ties and accessories. Suitable for outdoor applications. UV Resistant, UL94-HB flammability rating, and a maximum temperature rating of 185°F (85°C).



Heat Shrink

Cross-linked Polyolefin Thick Wall Heat Shrink features an adhesive lined inner wall that seals and provides excellent protection against moisture. Applications include insulating and protecting wires/cables in outdoor, wet locations. Thick wall for direct burial.



Voltage Rating: UL 486D Listed for 600 V
90°C continuous use

Shrink Ratio: 3:1

Temperature Range: -67°F to 230°F (-55°C to 110°C)

End Caps

Cross-linked Polyolefin Heat Shrink End Cap features an adhesive lined inner wall that seals and provides excellent protection against moisture. Applications include insulating and protecting wires and cables in wet locations.



Voltage Rating: 600 V

Shrink Ratio: 2.5:1 (HSEC)

Temperature Range: -40°F to 257°F (-40°C to 125°C)

Acetal Aerial Support System

Weather, chemical, and UV-resistant for harsh outdoor power and communications applications. The durable locking mechanism, complete with double stainless steel locking barbs, provides a consistent, reliable connection, and high-impact resistance and strength.



Heavy Duty Cable Tie Mount

Extra heavy cable tie mount in black is applied with a #10 (M5) screw. It is made of weather-resistant nylon 6.6, which increases mechanical strength, heat and wear resistance, and stiffness in outdoor environments.



Installation Tools

GS4EH-E

Installs light-heavy, heavy, and extra-heavy cross section cable ties.



GTH-E

Installs standard, heavy-standard, light-heavy, and heavy cross section cable ties.



Weather Resistant Cable Ties

Weather Resistant Nylon 612

Black weather resistant locking cable ties are designed to satisfy applications in outdoor environments requiring long weathering life, high resistance to ultraviolet light, resistance to corrosive elements such as zinc chloride, salts, hydrocarbons, chlorinated hydrocarbons, bases, and acid rain. Ideal for wire management on galvanized surfaces and frames, while delivering consistent performance and reliability.



PLT Product Series

Weather Resistant Nylon 6.6

Designed to satisfy the needs of general applications, while delivering consistent performance and reliability. Featuring a curved tip to allow for easy pick up from flat surfaces and faster initial threading.



For more information on Bundling and Securing products, scan the QR code.



Harsh Environment Identification

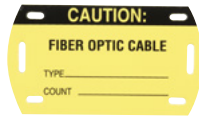
Detectable Tape

Underground hazard tape used to provide warning of buried utility lines.



Self Laminating Tag

Self-Laminating Fiber Optic Cable Marker Tag is manufactured using rigid vinyl and provides identification in environments where adhesives will not work. The rugged, high-quality material is resistant to abrasion and rated for indoor/outdoor use.



Heat Shrink Labels

The thermal transfer military grade heat-shrink label in black is one-sided and made of 3:1 flattened polyolefin. The heat-shrink sleeve is designed to provide a clear, reliable, and durable way to identify wires and cables.



TDP Printer

Desktop Printer for North American usage has 300 dpi resolution and 4 inches per second maximum print speed. Print a variety of labels, marker plates, and continuous tapes up to 4 inches wide.



Metal Marker Plates

Aluminum Steel Marker Plate provides permanent identification of pipes, conduits, valves, cables, and equipment in harsh environments. The designated plates feature an easy feed design with a raised slot to simplify cable tie installation and improve productivity. Three lines of text maximum



Embossing System

The PES400 Embossing System delivers a permanent identification solution on-site and on-demand. The system creates raised characters on stainless steel and aluminum marker plates to deliver maximum visibility for medium to high volume applications that are exposed to dirt and paint. Features fast embossing speed of up to 300 plates/hour. Includes 3mm and 5mm characters and Easy-Mark Plus Software



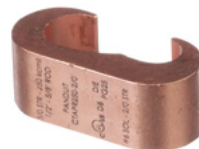
For more information on Harsh Environment Identification products, scan the QR code.

Grounding

CTAPR Series Grounding Connector

For connecting conductor to conductor and conductor to ground rod applications.

cULus Listed to UL 467 for direct burial grounding applications.



Braided Bonding Strap

Tin-plated to inhibit corrosive effects and improve termination quality of dissimilar metals.



cULus Listed to UL 467.

Grounding and Fence Clamps

Designed to ground copper conductor parallel or at a right angle to a rod, tube, or pipe.

cULus Listed to UL 467 for direct burial grounding applications.

Busbar: [GB4B0612TPI-1](#)
Groundbar: [UGB2/0-414-6](#)



Grounding *(continued)*

Mechanical Connector Split Bolts

Pressure bar provides a secure connection on a full range of conductor combinations assuring wire pull-out strength.

cULus Listed to UL 467 for direct burial grounding applications.



Service Post

Designed for grounding one or two copper code conductor to steel structures, busbars, or transformers or for tapping from busbar with hex nut and washer.

cULus Listed to UL 467 for direct burial grounding applications.



BlackFin Installation Tools

Hydraulic Crimp Tool: [CT-3001/STBT](#)

Battery Powered Crimp Tool with Bluetooth® technology, crimps easily with a rotating flip-top crimp head since adapters can change out quickly. The crimp tool has a force of 6.7 tons and meets OSHA mandated electrical and mechanical product safety requirements for handheld and motor-operated electric tools.



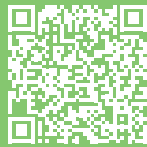
Battery Crimp Tool 12 ton: [CT-2931/STBT](#)

Battery Powered Crimping Tool with Bluetooth® technology, crimps with just the touch of a button. The crimp tool has a force of 12 tons.



 Tested by CSA to Meet OSHA safety requirements.

For more information on Grounding products, scan the QR code.



Enclosures

Security Enclosure

NEMA 4X Wireless Security Enclosure, 14" x 12" (356mm x 305mm), Blue; Pre-installed with pre-fabricated backplane, 4CS-1/2 Electrical box, pole mounting bracket, (2) NEMA 4X Compression fittings, includes UTP connectivity kit.



Fiber Splice Enclosure

The fiber splice enclosure houses, organizes, manages, and protects fiber optic cables and splices. The enclosure meets UL 508A, as well as NEMA type 4/12/4X, and IP66 rating. The enclosure accommodates a maximum of 360 fibers, using fifteen 24 fiber fusion splice modules (FOSM's). Includes fiber splice modules with approved mounting brackets, slack managers to accommodate up to three meters of slack, and grounding kit.



Dome Closure

The Dome Fiber Splice Closure houses, organizes, manage, and protects fiber optic cables and splices. The closure provides a hermetic seal and provide IP68 rated protection when properly used with the provided grommet to seal cable entry and exits. The closure can accommodate buffer tube or ribbon fiber splices, when the appropriate splice tray is installed. To be included are the enclosure dome, appropriate tray organizer, and grommet kit.



Stainless Steel Pole Mounting Solutions

Metal Locking Tie

Pan-Steel® 304 grade stainless steel cable tie speeds up installation with a patented, wide entry self-locking head that eases band threading and insertion. Unique locking ramp design and strengthening ribs allows the tie to lock into place at any length along the tie body with increased lock strength. Fully rounded edges ensure worker and bundle safety.



Pan-Steel® Custom Length Banding System

Panduit® Custom-Length Continuous Banding can be cut to just the right length to guarantee a snug fit for your specific project. Plus, the banding is built with 304 stainless steel, so it suits indoor and outdoor environments. Extra-heavy, 250'L (76m), Tensile Strength: 1335, Bundles at least 1.0 (25mm)



Loose piece banding head for extra-heavy cross section banding. *(sold separately)*

Pan-Steel® Strapping Tool

The BT2HT Hand Operated Installation tool tensions and cuts strapping. Designed with a multi-position rear handle that provides flexibility and easy removal of excess strap. Used with Pan-Steel Strapping.



For more information on Enclosures and SS Ties products, scan the QR code.

Optical Fiber

Dielectric Double Jacketed (DDJ) Cable

Indoor/outdoor dielectric double jacketed (DDJ) is OS2 and Riser (OFNR), Low Smoke Zero Halogen (LSZH) rated, and features 250µm fibers.



Outside Plant (OSP) Cable

Outside plant armored (single armor, single jacket) cable is OS2, non-rated, and features 250µm fibers.



Mechanical Splice Connector

SC-APC Fiber Optic Connector is a singlemode 9/125µm OS2 simplex fiber connector, intended for 900-micron tight-buffered fiber installation. Field termination can be done in about two minutes using the OptiCam 2 Termination Tool.



Splice On Fiber Connector

Fusion Splice SC-APC Fiber Optic Connector is a singlemode 9/125µm OS2 simplex fiber connector, intended for 250µ loose-tube fiber with 900µ build-up tubing. Field termination can be done in about two minutes on several common splice machine brands.



For more information on Optical Fiber products, scan the QR code.



Reliable Solutions You Can Count On

Whether you're building out a telecommunication building or extending fiber to the home, Panduit has the solutions you can trust to deliver reliable broadband service, with easy installation, and product availability where and when you need it.

Learn more about our broadband solutions at www.panduit.com/broadband.

Our most important connection is with you.

We have the knowledge and experience to help you make the most of your infrastructure investment.

www.panduit.com

Let's Connect
www.panduit.com/contact-us

PANDUIT[®]