

# Compatibility of Third-Party Scanners with the *RapidID*<sup>™</sup> Network Mapping System Desktop Software

Ensuring your scanner works seamlessly with *RapidID* is important for an efficient and reliable experience. To that end, we test each third-party scanner for various criteria, including functionality, connection reliability, and overall compatibility, before certifying them for use with our software.

## This document serves a dual purpose:

**Compatibility List:** We offer a certified list of third-party scanners tested and approved for use with RapidID Desktop. This ensures you make an informed decision when buying a new scanner.

**Quick Configuration Guide:** We provide a straightforward setup guide to help you easily and quickly connect your scanner with the *RapidID* desktop application.

Our goal is to consistently add to our list of compatible scanners, ensuring each one meets the standards for reliable connection and performance.

## Certified Scanners:

To guarantee a scanner works well with *RapidID*, we follow these steps:

- 1. Compatibility Check:** Our team tests the scanner with our software in various conditions to ensure they work together well.
- 2. Features Testing:** We then examine the scanner features to make certain they perform well when used with *RapidID*. This includes scan quality connection reliability, among other tests.
- 3. Certification:** If the scanner passes all our tests, we approve it as compatible with the Panduit *RapidID* desktop software.

## Certified Scanner List:

The following scanners have been approved for use with the *RapidID* Desktop Software.

Make	Model	Scanner Type	Supported Connection Modes		
			BLE (Bluetooth Low Energy)	Bluetooth SPP (Serial Port Profile)	Wired COM (USB)
Zebra	<a href="#">DS2278</a>	Handheld Wired/Wireless	—	Yes	Yes
Zebra	<a href="#">DS2208</a>	Handheld (Wired Only)	—	—	Yes
Honeywell	<a href="#">Voyager XP 1472g</a>	Handheld Wired/Wireless	—	Yes	Yes
Netum	<a href="#">NT1228BL</a>	Handheld Wired/Wireless	Yes	Yes	Yes
Netum	<a href="#">C750</a>	Small Form Factor	Yes	Yes	Yes
Netum	<a href="#">NT-M5</a>	Handheld (Wired Only)	—	—	Yes

## Obtaining Scanners:

To enhance your experience, we suggest purchasing a barcode scanner that we have thoroughly assessed and certified to ensure you get the best experience. We partnered with Barcodes Inc., a leading reseller specializing in reliable barcode scanning devices from top manufacturers. To purchase a scanner that's designed to be compatible with *RapidID*, [check out their website](#). You will find a range of scanners that meet our high standards for compatibility and dependability.

## Third-Party Scanner Quick Setup:

The section below offers a streamlined guide for setting up a third-party scanner to work with the *RapidID* desktop software. This guide is a quick way to configure your scanner with our desktop application for immediate use. For comprehensive instructions, please refer to the complete user manuals available on each manufacturer's website.

### Zebra DS2278

#### Connection via Bluetooth SPP (Serial Port Profile)

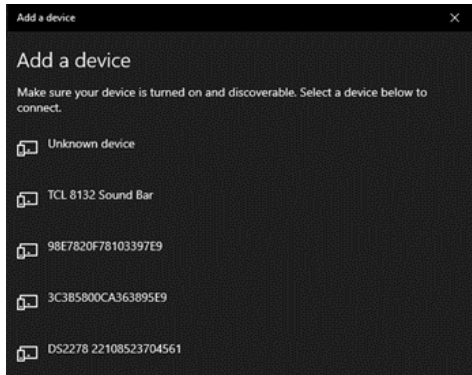
Direct link from barcode scanner to host computer, no cradle

1. On Initial Setup, scan the SPP Bluetooth Classic (Discoverable) barcode.

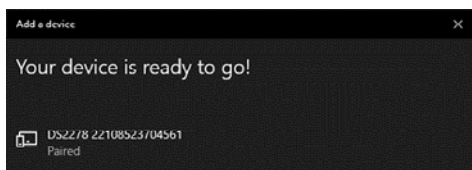


SPP Bluetooth Classic (Discoverable)

2. From the host (computer), discover DS2278 and select your scanner from the discovered device list.

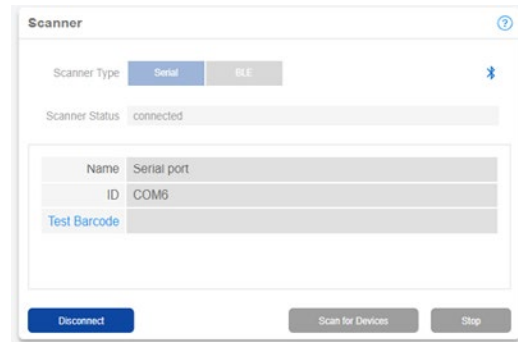


3. Your scanner should now connect to the computer via a Bluetooth Serial Port (COM).

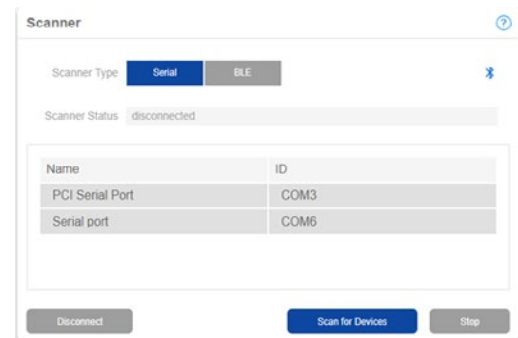


4. In the *RapidID* Desktop Software, navigate to the scanner page.

5. Set the scanner type to 'Serial,' and click the 'scan for devices' button.



6. Connect to the appropriate COM port to which the scanner is connected. A toast message will display the connected status, and the barcode scanner will make a connection noise.



## Connection via Wired (CDC) host mode

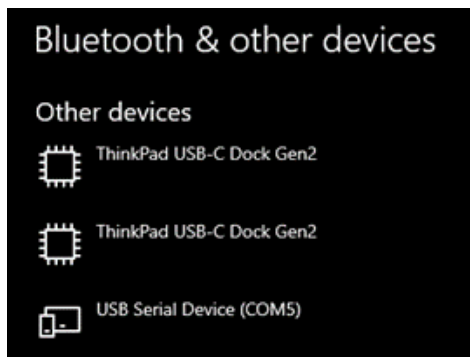
The cradle is USB connected to the host computer

1. Connect the cradle to the computer via the USB cable provided.
2. On Initial setup, scan the CDC Host mode barcode.



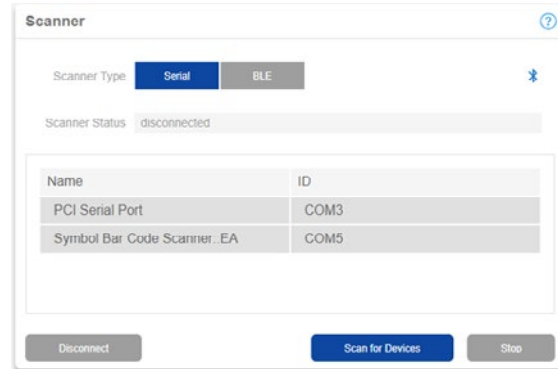
USB CDC Host

3. The cradle should now emulate a COM device within the Windows® operating system.

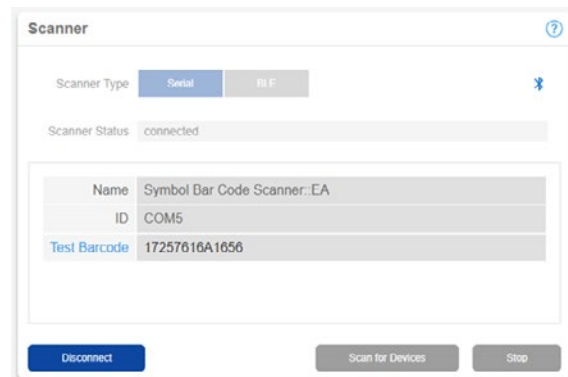


4. In the *RapidID* Desktop Software, navigate to the scanner page.

5. Set the scanner type to 'Serial,' and click the 'scan for devices' button.



6. Connect to the appropriate COM port to which the scanner is connected. A toast message will display the connected status.



## Netum NT-1228BL

### Connection via Bluetooth SPP (Serial Port Profile)

Direct connection from barcode scanner to host computer, no USB receiver.

1. Scan the “working via Bluetooth” barcode.



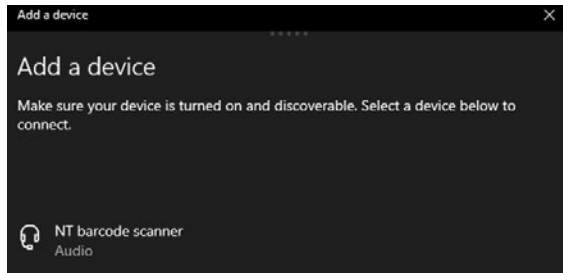
Working via Bluetooth

2. Then scan the SPP barcode.

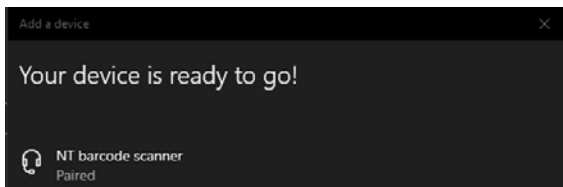


SPP Mode

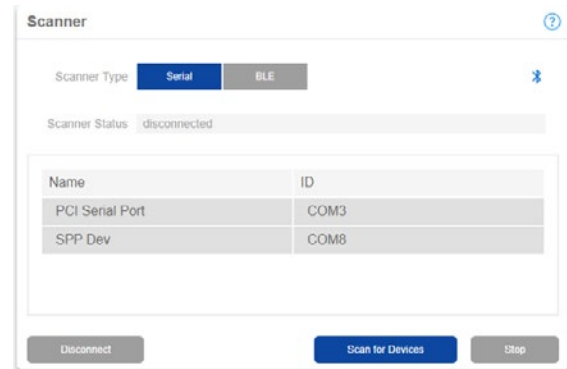
3. From host (computer) discover NETUM Barcode Scanner and select your scanner from the discovered device list.



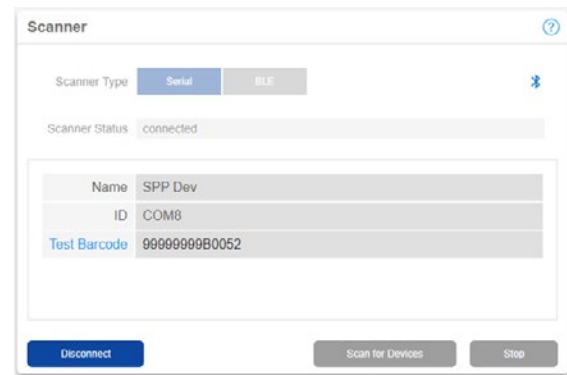
4. Your scanner should now be connected to the computer via a Bluetooth Serial Port (COM).



5. In the *RapidID* Desktop Software, navigate to scanner page.
6. Set scanner type to 'Serial', and click the 'scan for devices' button.



7. Connect to the appropriate COM port that the scanner is connected to. A toast message will display the connected status, and the barcode scanner will make a connection noise.



## Connection via Bluetooth BLE (Low Energy) mode

The cradle is USB connected to the host computer

1. Begin by scanning the “working via Bluetooth” barcode.



Working via Bluetooth

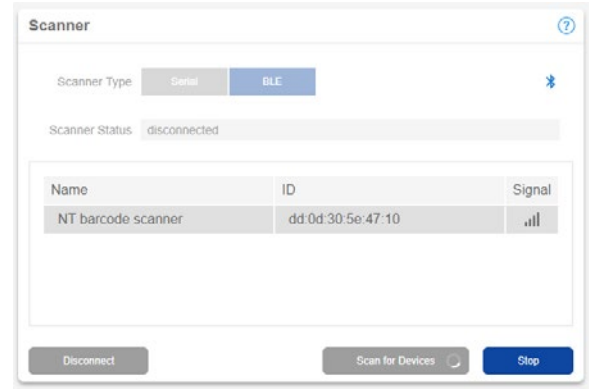
2. Then scan the ‘BLE Mode’ barcode.



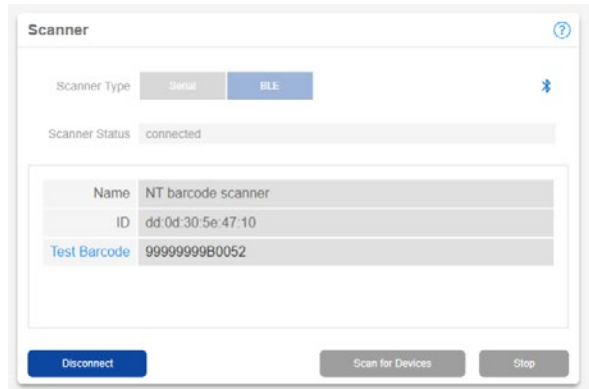
BLE Mode

3. In the *RapidID* Desktop Software, navigate to scanner page.

4. Set scanner type to ‘BLE’ and click the ‘scan for devices’ button.



5. Click the appropriate barcode scanner to pair it with the *RapidID* desktop software.



# Scanner Guide

## Connection via Wired (USB COM) host mode

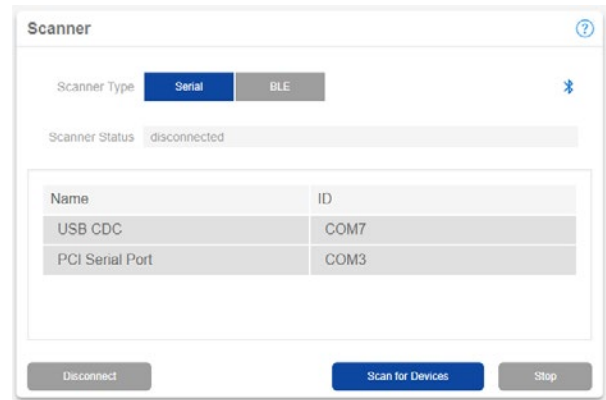
Direct Connection from barcode scanner to computer with a USB cable

1. Connect barcode scanner to computer via the USB cable provided.
2. Scan the 'USB cable as Virtual COM' barcode.
4. In the *RapidID* Desktop Software, navigate to scanner page.
5. Set scanner type to 'Serial', and click the 'scan for devices' button.

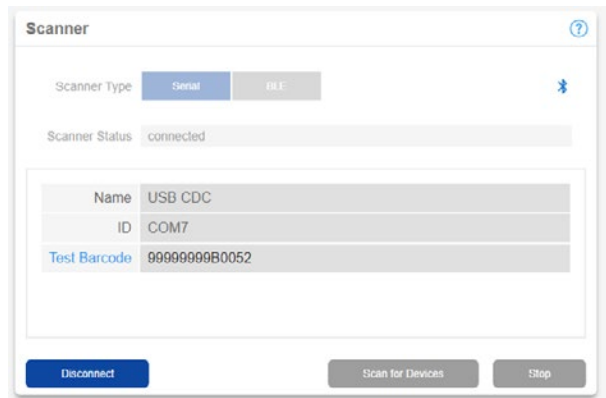


USB Cable as Virtual COM

3. The scanner should now be emulated as a COM device within the windows operating system.



6. Connect to the appropriate COM port that the scanner is connected to. A toast message will display the connected status.



### WORLDWIDE SUBSIDIARIES AND SALES OFFICES

PANDUIT US/CANADA  
Phone: 800.777.3300

PANDUIT EUROPE LTD.  
London, UK  
Phone: 44.20.8601.7200

PANDUIT SINGAPORE PTE. LTD.  
Republic of Singapore  
Phone: 65.6305.7575

PANDUIT JAPAN  
Tokyo, Japan  
Phone: 81.3.6863.6000

PANDUIT LATIN AMERICA  
Guadalajara, Mexico  
Phone: 52.33.3777.6000

PANDUIT AUSTRALIA PTY. LTD.  
Victoria, Australia  
Phone: 61.3.9794.9020

For a copy of Panduit product warranties, log on to [www.panduit.com/warranty](http://www.panduit.com/warranty)



For more information  
Visit us at [www.panduit.com](http://www.panduit.com)  
Contact Customer Service by email: [cs@panduit.com](mailto:cs@panduit.com)  
or by phone: 800.777.3300

© 2023 Panduit Corp.  
ALL RIGHTS RESERVED.  
COFL54-WW-ENG  
9/2023