

Data Center Connectivity Guide

WHAT APPLICATIONS WILL YOU BE RUNNING?

- 10/25/50GBASE-SR
- 40/100GBASE-SR4
- 40/100 Gb BiDi
- 16/32/64/128GB Fibre Channel
- 40/100GBASE-LR4
- 10GBASE-LR
- 40GBASE-FR, 100GBASE-LR1, 100GBASE-FR

WHAT FIBER TYPE ARE YOU LOOKING FOR?

Multimode

- OM3 50/125µm
- OM4 50/125µm
- OM4+ 50/125µm (Signature Core™ Fiber Optic Cabling System)
- OM5+ 50/125µm (Signature Core™ Fiber Optic Cabling System)

Singlemode

- OS2 9/125µm

WHAT POLARITY METHOD WILL YOU DEPLOY?

- Method A
- Method B
- Universal

Solutions represented throughout this guide apply to the most common configurations only.

Other configurations available.

Contact Panduit Customer Service for details at: 800-777-3300.

WHAT LEVEL OF PERFORMANCE ARE YOU LOOKING FOR IN YOUR CABLE ASSEMBLIES?

Maximum Insertion Loss (per mated pair)

- Standard Singlemode MPO .75dB
- Standard Singlemode LC .35dB
- Optimized Multimode MPO .35dB
- Optimized Multimode LC .15dB
- Ultra Multimode MPO .25dB
- Ultra Multimode LC .10dB

WHAT WILL YOUR LINK/CHANNEL LOOK LIKE?

- Longest length?
- How many cassettes or FAP's?
- Will there be a cross connect? How many?
- How many patch cords will each link require?
- How long are your patch cords?

WHAT FIBER DENSITY ARE YOU LOOKING FOR?

- HD Flex™ Fiber Cabling System 144 LC Fibers Per 1 RU, available in 1 RU, 2 RU, and 4 RU
- QuickNet™ SFQ System 96 Fibers Per 1 RU
- Opticom® Fiber System 96 Fibers Per 1 RU, available in 1 RU, 2 RU (192 Fibers), and 4 RU (288 Fibers)

KEY SYSTEM FEATURES:

HD Flex™ Fiber Cabling System

- Highest port density, maximizes real estate usage

QuickNet™ SFQ System

- Accepts copper and fiber, mounts in panel without an enclosure

Opticom® Fiber System

- Traditional cassette design, most available connector spacing

Reach Table

Reach Table					
Application	Connectivity Budget (db) 1.5* Fiber Category				
	OM3	OM4	OM4+ Signature Core™	OM5	OM5+ Signature Core™
	Maximum Channel Length (Meters)				
10 Gb/s Ethernet (10GBASE-SR)	300	400	550	400	465
25 Gb/s Ethernet (25GBASE-SR)	90	125	160	125	140
50 Gb/s Ethernet (50GBASE-SR)	70	100	130	100	115
16G Fibre Channel (FC, SAN)	100	125	200	125	160
32G Fibre Channel (FC, SAN)	70	100	125	100	115
64G Fibre Channel (Duplex**) (FC, SAN)	70	100	125	100	100
128G Fibre Channel (FC, SAN)	60	85	95	85	90
Cisco® 40G BiDi	100	135	200	150	175
Cisco® 100G BiDi	70	100	150	130	150
40 Gb/s Ethernet (4x10) (40GBASE-SR4)	100	125	165	125	145
100 Gb/s Ethernet (4x25) (100GBASE-SR4)	70	100	125	100	115
40 Gb/s Ethernet (40G SWDM4)	240	350	440	440	485
100 Gb/s Ethernet (100G SWDM4)	75	100	150	150	185

* 2 Mated Connector Pairs @ .75dB/ea - 1.5dB

** For 64GB Fibre Channel parallel versions, use 16G FC reach limits
Cisco® is a registered trademark of Cisco Technology, Inc.

Fiber Standards

Panduit® Laser-Optimized OM3, OM4 multimode fibers meet domestic and international standards. Signature Core™ Fiber Optic Cabling System exceeds domestic and international standards for optical fiber. This includes TIA-492AAAB, TIA-492AAAC, TIA-492AAAD and IEC 60793-2-10 and supports a diverse set of legacy and contemporary applications including Ethernet, Fibre Channel, Infiniband, and FICON (Fiber Connection), among others.

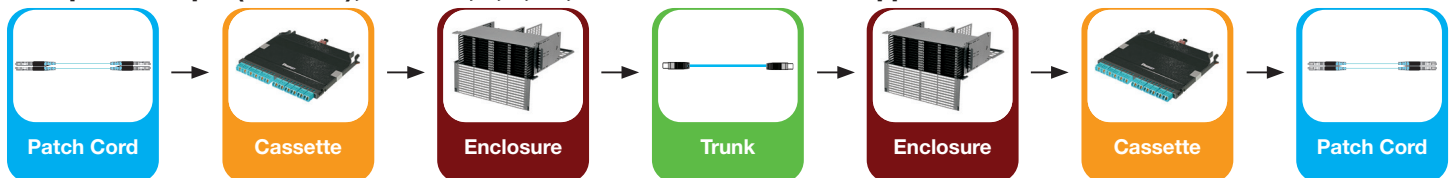
All trademarks, service marks, trade names, product names, and logos appearing in this document are the property of their respective owners.

[View the Link Loss Calculator.](#)

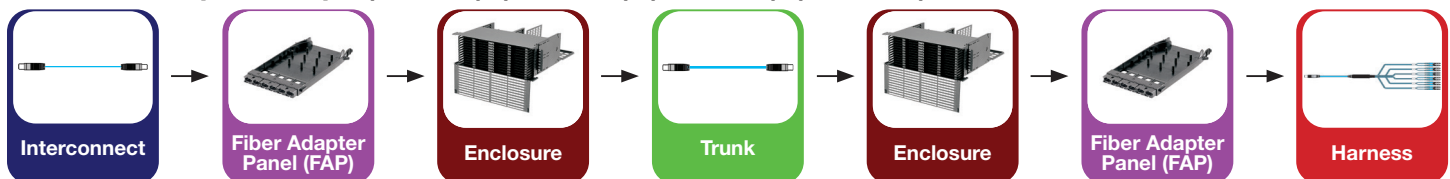
Connectivity Solution

1. Choose your connectivity application solution (A, B, or C) below.
2. Build your chosen solution from components on pages 3, 4, and 5.

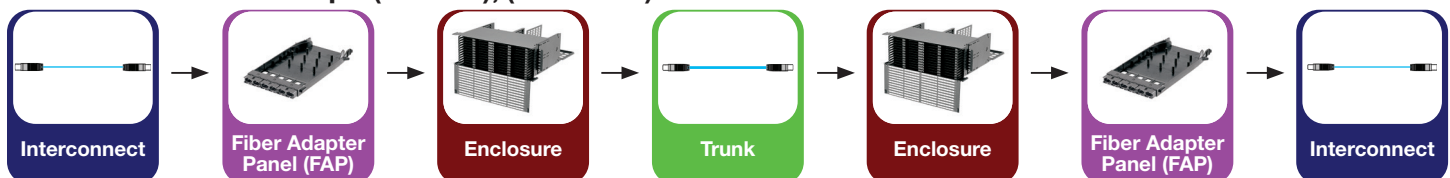
A. Duplex Example (10G-10G), 40G BiDi, 4, 8, 16, 32G Fibre Channel SAN App



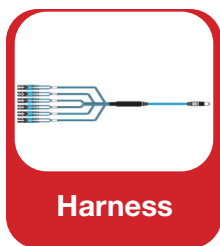
B. Parallel to Duplex Example (40G-10G), (100G-10G), (100G-40G), (128G-32G)



C. Parallel to Parallel Example (40G-40G), (100G-100G)



Harnesses/Patch Cords - Choose Your Harness & Patch Cords



Harnesses*	12 Fiber Plenum, Female PanMPO™ Connector to LC (Push-Pull or Uniboot) (24" equal breakout)
Part Number	Description
FZTRP7NQSONF010	OM4 Female PanMPO™ Connector to LC Push-Pull Optimized IL - 10'
FZTRP7NUSONF010	OM4 Female PanMPO™ Connector to LC Uniboot Optimized IL - 10'
FXTRP7NQSONF010	OM3 Female PanMPO™ Connector to LC Push-Pull Optimized IL - 10'
FXTRP7NUSONF010	OM3 Female PanMPO™ Connector to LC Uniboot Optimized IL - 10'
F9TRP5NQSSNF010	OS2 Female MPO to LC Push-Pull, Standard IL - 10'

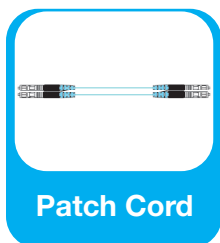
Harnesses*	8 Fiber Plenum, 4 to 1 Conversion Harnesses, Female PanMPO™ Connector to LC (Push-Pull) (24" equal breakout)
Part Number	Description
FZ8RP7NQSVNF010	OM4 Female PanMPO™ Connector to LC Push-Pull Optimized IL - 10'
FZ8RP7NUSVNF010	OM4 Female PanMPO™ Connector to LC Uniboot Optimized IL - 10'
FX8RP7NQSVNF010	OM3 Female PanMPO™ Connector to LC Push-Pull Optimized IL - 10'
FX8RP7NUSVNF010	OM3 Female PanMPO™ Connector to LC Uniboot Optimized IL - 10'
F98RP5NQSQNF010	OS2 Female MPO to LC Push-Pull, Standard IL - 10'

*For male PanMPO™ Connector, change "7" in position 6 to "8"

For male MPO, change "5" in position 6 to "6"

** To change from LC Push-Pull to Uniboot connector, change the "Q" in position 8 to a "U"

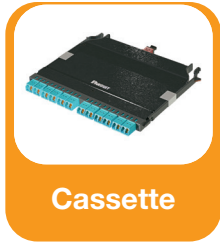
Available in lengths from 3 ft. to 30 ft.



Patch Cords	2 Fiber 1.6mm Patch Cord, Riser* LC Push-Pull to LC Push-Pull
Part Number	Description
FZ2ERQ1Q1SNM001	OM4, Optimized IL, 1 meter
FZ2ERQ1Q1SNM00*	OM4, Optimized IL, * meters
FZ2ERQ1Q1NNM001	OM4, Ultra IL, 1 meter
FX2ERQ1Q1SNM001	OM3, Optimized IL, 1 meter
FX2ERQ1Q1SNM00*	OM3, Optimized IL, * meters
F92ERQ1Q1SNM001	OS2, Standard IL, 1 meter
F92ERQ1Q1SNM00*	OS2, Standard IL, * meters

*Available from 001 to 050m, in 1m increments

Cassettes - Choose Your System Solution



Cassette

HD Flex™ Fiber Cabling System

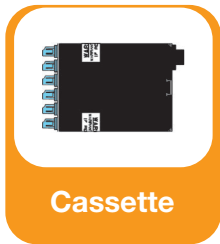
- Has the capacity to do 144 LC Fibers in 1 RU, 288 Fibers in 2 RU, and 576 in 4 RU
- Maximizes real estate usage



Cassette

QuickNet™ SFQ System

- Has the ability to do 96 Fibers in 1 RU
 - Has no enclosures in its solution
 - Has the ability to do both Fiber and copper in the same patch panel
- See copper on the back page.



Cassette

Opticom® Fiber System

- Has the ability to do 96 Fibers in 1 RU, 192 Fibers in 2 RU, and 288 Fibers in 4 RU
- Allows the user to have more space to work with

HD Flex™ Fiber Cabling System			
Part Number	Description	Part Number	Description
HD Flex™ 12 Fiber Cassette MPO to LC Duplex		HD Flex™ Cassette (2) 12F MPO to 12 LC Duplex	
FHCZO-12-10U	OM4, Universal Polarity, Optimized IL	FHCZO-24-10U	OM4, Universal Polarity, Optimized IL
FHCXO-12-10U	OM3, Universal Polarity, Optimized IL	FHCXO-24-10U	OM3, Universal Polarity, Optimized IL
FHC9N-12-10AS	OS2, Method A, Standard IL	FHC9N-24-10AS	OS2, Method A, Standard IL
FHC9N-12-10AF	OS2, Method A, pair flipped, Standard IL	FHC9N-24-10AF	OS2, Method A, pair flipped, Standard IL
HD Flex™ 4 to 1 Conversion Cassette; 1 MPO to 4 LC Duplex (parallel to duplex optics)		HD Flex™ Cassette (1) 24F MPO to 12 LC Duplex	
FHC3ZO-08-10BN	OM4, Method B, Optimized IL	FHCZO-24F-10A	OM4, Method A, Universal, Optimized IL
FHC3XO-08-10BN	OM3, Method B, Optimized IL	FHCXO-24F-10A	OM3, Method A, Universal, Optimized IL
FHC39N-08-10AN	OS2, Method A, Standard IL	FHC9N-24F-10A	OS2, Method A, Universal, Standard IL
HD Flex™ LC Splice Cassette, 6 LC Duplex, Preloaded with Fiber			
FHSZO-12-10P*	OM4, Optimized IL		
FHSXO-12-10P*	OM3, Optimized IL		
FHS9N-12-10P*	OS2, Standard IL		

*Change "P" for Pigtails to "R" for Ribbon Fiber

QuickNet™ SFQ System			
Part Number	Description	Part Number	Description
QuickNet™ SFQ 12 Fiber Cassette; MPO to LC Duplex		QuickNet™ SFQ 4 to 1 Conversion Cassette; 1 MPO to 4 LC Duplex (parallel to duplex optics)	
FQZO-12-10U	OM4, Method B, Universal, Optimized IL	FQ3ZO-08-10B	OM4, Optimized IL
FQXO-12-10U	OM3, Method B, Universal, Optimized IL	FQ3XO-08-10B	OM3, Optimized IL
FQ9N-12-10AS	OS2, Method A, Standard IL	FQ39N-08-10A	OS2, Optimized IL
FQ9N-12-10AF	OS2, Method A, pair flipped, Standard IL		

Opticom™ Fiber System			
Part Number	Description	Part Number	Description
Opticom® 12 Fiber, MPO to LC Duplex		Opticom® 24 Fiber, (2) 12F MPO to LC Duplex	
FC2ZO-12-10U	OM4, Method B, Universal Polarity, Optimized IL	FC2ZO-24-10U	OM4, Method B, Universal Polarity, Optimized IL
FC2XO-12-10U	OM3, Method B, Universal Polarity, Optimized IL	FC2XO-24-10U	OM4, Method A, pair flipped, Optimized IL
FC29N-12-10AS	OS2, Method A, Standard IL	FC29N-24-10AS	OM3, Method A, Optimized IL
FC29N-12-10AF	OS2, Method A, pair flipped, Standard IL	FC29N-24-10AF	OM4, Method B-B2 (1-12 array), Optimized IL
Opticom® 4 to 1 Conversion Cassette; 2 MPO to 8 LC Duplex (parallel to duplex optics)			
FC3ZO-16-10B	OM4, Method B, Optimized IL		
FC3XO-16-10B	OM3, Method B, Optimized IL		

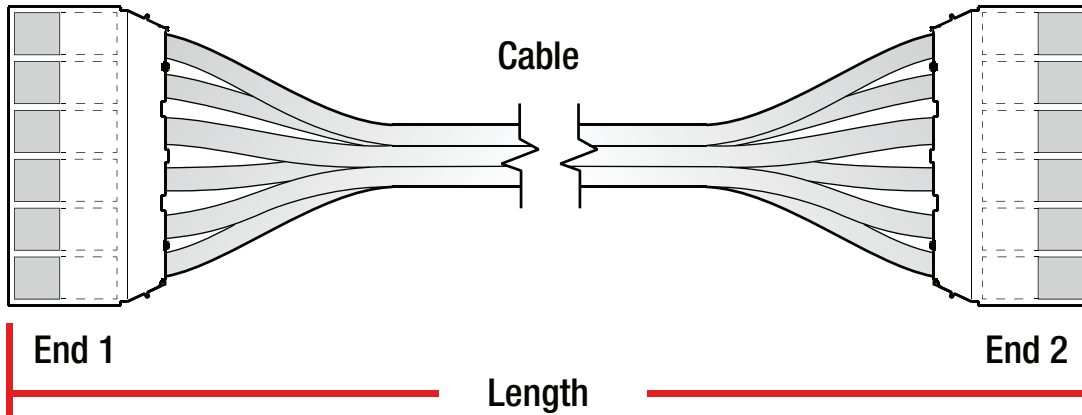
Splice Cassettes*			
Part Number	Description	Part Number	Description
Opticom® LC Splice Cassette, 6 LC Duplex, Preloaded with Fiber		Opticom® SC Splice Cassette, 6 SC Duplex, Preloaded with Fiber	
FCSZO-12-10P*	OM4, Optimized IL	FCSZO-12-03P*	OM4, Optimized IL
FCS9N-12-10P*	OS2, Standard IL	FCS9N-12-SAP*	OS2, SC/APC, Standard IL
FCS9N-12-LAP*	OS2, LC/APC, Standard IL		

*Change "P" for Pigtails to "R" for Ribbon Fiber

► Configure Copper QuickNet™ part numbers in our online tool

Selection Guide for QuickNet™ Cable Assembly Semi-Custom Part Numbers

Example: QCPBCCB0001F010 - QuickNet™ Cable Assembly, Category 6 Plenum, Blue Cable, UTP, Cassette to Cassette, 10'.



UTP Cassette



UTP Jack Modules



UTP Modular Plugs



Unterminated

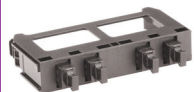
	Part Number Series	Copper QuickNet™ Trunk Assembly Descriptions
Category 6 Riser	QCRBCCB0001F***	Category 6, UTP riser blue cable with blue cassette to blue cassette
	QCRBCJB0001F***	Category 6, UTP riser blue cable with blue cassette to blue jack
	QCRBCPB0001F***	Category 6, UTP riser blue cable with blue cassette to plug
	QCRBCUB0001F***	Category 6, UTP riser blue cable with blue cassette to unterminated
Category 6 Plenum	QCPBCCB0001F***	Category 6, UTP plenum blue cable with blue cassette to blue cassette
	QCPBCJB0001F***	Category 6, UTP plenum blue cable with blue cassette to blue jack
	QCPBCPB0001F***	Category 6, UTP plenum blue cable with blue cassette to plug
	QCPBCUB0001F***	Category 6, UTP plenum blue cable with blue cassette to unterminated
Category 6A Riser	QZRBCCB0001F***	Category 6A, UTP Vari-MaTriX riser blue cable with blue cassette to blue cassette
	QZRBCJB0001F***	Category 6A, UTP Vari-MaTriX riser blue cable with blue cassette to blue jack
	QZRBCPB0001F***	Category 6A, UTP Vari-MaTriX riser blue cable with blue cassette to plug
	QZRBCUB0001F***	Category 6A, UTP Vari-MaTriX riser blue cable with blue cassette to unterminated
Category 6A Plenum	QZPBCCB0001F***	Category 6A, UTP Vari-MaTriX plenum blue cable with blue cassette to blue cassette
	QZPBCJB0001F***	Category 6A, UTP Vari-MaTriX plenum blue cable with blue cassette to blue jack
	QZPBCPB0001F***	Category 6A, UTP Vari-MaTriX plenum blue cable with blue cassette to plug
	QZPBCUB0001F***	Category 6A, UTP Vari-MaTriX plenum blue cable with blue cassette to unterminated

*** = Length in Feet from 010 to 295

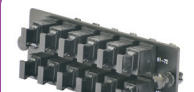
Fiber Adapter Panels (FAPs)



Fiber Adapter Panel



Fiber Adapter Panel



Fiber Adapter Panel



Fiber Adapter Panel

HD Flex™ Fiber Cabling System

Part Number	Description
HD Flex™ LC FAP with 6 LC Duplex Adapters	
FHSXN-12-10N	Multimode adapters, Aqua, zirconia sleeves (LC Pigtails not included)
FHS9N-12-10N	Singlemode adapters, Blue, zirconia sleeves (LC Pigtails not included)
HD Flex™ MPO FAP Cassettes	
FHMP-6-ABL	6 MPO adapters, Black, Method A
FHMP-6-BCG	6 MPO adapters, Charcoal Gray, Method B
FHMP-6-ARD	6 MPO adapters, Red, 24F MPO, Method A

QuickNet™ SFQ System

Part Number	Description
QuickNet™ SFQ MPO FAPs with 6 MPO Adapters	
FQMAP45BL	4 MPO adapters, Black, Method A
FQMAP65BL	6 MPO adapters, Black, Method A
FQMAP85BL	8 MPO adapters, Black, Method A
FQMAP46CG	4 MPO adapters, Charcoal Gray, Method B
FQMAP66CG	6 MPO adapters, Charcoal Gray, Method B
FQMAP86CG	8 MPO adapters, Charcoal Gray, Method B
FQMAP45RD	4 MPO adapters, Red, 24F MPO, Method A
FQMAP65RD	6 MPO adapters, Red, 24F MPO, Method A
FQMAP85RD	8 MPO adapters, Red, 24F MPO, Method A

Opticom® Fiber System

Part Number	Description
Opticom® MPO FAPs with 6 MPO Adapters	
FAPH**12BLMPO	FAP with ** MPO adapters, Black, Method A, horizontal
FAPV**12BLMPO	FAP with ** MPO adapters, Black, Method A, vertical
FAPH**12CGMPO	FAP with ** MPO adapters, Charcoal Gray, Method B
FAPH**24RDMPO	FAP with ** MPO adapters, Red, 24F MPO, Method A

**Insert 06, 12, or 18 for the number of MPOs required, ex: FAPH1212BLMPO

Part Number	Description
Opticom® LC Duplex FAPs	
FAP6WAQDLCZ	6 Multimode adapters, Aqua, zirconia split sleeves
FAP12WAQDLCZ	12 Multimode adapters, Aqua, zirconia split sleeves
FAP6WBUDLCZ	6 Singlemode adapters, Blue, zirconia split sleeves
FAP12WBUDLCZ	12 Singlemode adapters, Blue, zirconia split sleeves
FAP6WAGDLCZ	6 Singlemode LC/APC adapters, Green, zirconia split sleeves
FAP12WAGDLCZ	12 Singlemode LC/APC adapters, Green, zirconia split sleeves

Enclosures/Panels



Enclosure

HD Flex™ Fiber Cabling System	
Part Number	Description
Enclosures	
FLEX*U06	*1, 2, or 4 RU, 6-Port HD Flex™ Enclosure
FLEX*U12	*1, 2, or 4 RU, 12-Port HD Flex™ Enclosure



Panel

Part Number	Description
Panels	
FLEX*UPN06	*1, 2, or 4 RU, 6-Port HD Flex™ Panel
FLEX*UPN12	*1, 2, or 4 RU, 12-Port HD Flex™ Panel



Enclosure

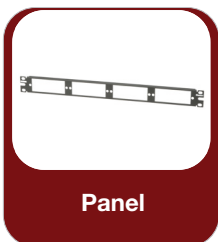
Part Number	Description
Under Floor Enclosures	
FLEX-ZRFE	HD Flex™ Zone Raised Floor Enclosure, Gray

Part Number	Description
HD Fusion Enclosures	
FRMHSS-4RU	4 RU, HD fusion splicing enclosure
FWMHSSGS-3456**	Wall mount splice enclosure, for up to 3456 ribbon fibers (Ribbon fibers not included)
FWMHSSGS-6912**	Wall mount splice enclosure, for up to 6912 ribbon fibers (Ribbon fibers not included)

*Replace ** with 1, 2, or 4 to order the appropriate RU version (ex: FLEX1U06 is a 1 RU, 6-Port HD Flex™ Enclosure)
 **G* in HD Fusion Enclosure part number is Gray, replace G with B for Black, W for White
 (ex: FWMHSSWS-3456 is a White enclosure)

QuickNet™ SFQ System	
Part Number	Description
Enclosures	
QAPP24BL	QuickNet™ Patch Panel, angled, 24-Port, 1 RU
QAPP48HDBL	QuickNet™ Patch Panel, angled, 48-Port, 1 RU
QPP24BL	QuickNet™ Patch Panel, flat, 24-Port, 1 RU

Opticom® Fiber System	
Part Number	Description
Enclosures	
FCE*U	Fiber cassette enclosure, * RU
FMT1	Rack mount fiber tray, 1 RU
FMT2	Rack mount fiber tray, 2 RU
FRME1U	Rack mount fiber enclosure, 1 RU for fusion splices



Panel

Part Number	Description
Panels	
CFAPPBL1	Fiber adapter panel, 1 RU, holds 4 FAP's
CFAPPBL2	Fiber adapter panel, 2 RU, holds 8 FAP's

*Replace ** with 1, 2, or 4 to order the appropriate RU version (ex: FLEX1U06 is a 1 RU, 6-Port HD Flex™ Enclosure)
 Note: *1, 2, and 4 RU options

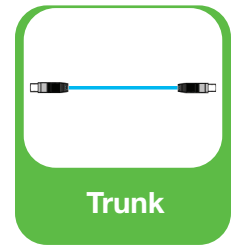


HD Flex™ Fiber Cabling System	
Part Number	Description
Fiber Management Accessories	
FLEX-PLATE*UR	HD Flex™ Enclosure Trunk Slack Plate with Rear Cover - *RU, Black
FLEX-PLATE*URW	HD Flex™ Enclosure Trunk Slack Plate with Rear Cover - *RU, White
FLEX-PLATE*UPR	HD Flex™ Patch Panel Trunk Slack Plate with Rear Cover - *RU, Black
FLEX-PLATE*UPRW	HD Flex™ Patch Panel Trunk Slack Plate with Rear Cover - *RU, White
FLEX-FCM*UA	HD Flex™ Front Cable Manager, *1, 2, or 4 RU
FLEX-0RUBR06	HD Flex™ Zero RU Bracket, 6-Port (Includes 1 FLEX-0RUUCH06)
FLEX-0RUUCH06	HD Flex™ Zero RU Bracket, 12-Port (Includes 1 FLEX-0RUUCH12)
FLEX-0RUBR12	HD Flex™ Zero RU Cassette Holder, 12-Port (For adding more cassettes to FLEX-0RUBR12)
FHSBBL06W	HD Flex™ Blanking Panel, 6-Port
FQCBRUA	QuickNet™ Zero RU Bracket, Holds 2 QuickNet™ Cassettes or Adapters
FEABRU	Opticom® Zero RU Bracket, Holds 1 Opticom® Cassette or FAP
QPPABL	QuickNet™ Patch Panel Adapter, accepts Mini-Com® Modules
QPPBBL	QuickNet™ Patch Panel Blank
FQCRCM	QuickNet™ Cassette Rear Cable Manager (2 post rack only)
FOSMF	Fiber optic splice module for FRME Rack mount enclosures
FSC24	Splice chip, 24 position
FST6	Fiber splice tray - 6" (152mm)
FSTK	Fiber splice tray - 6 mechanical or fusion splices
FST24	Fiber splice tray - 24 mechanical or fusion splices
FST48	HD Fusion splice tray kit
FST144R	Tray for ribbon fiber splicing
FOSMH1U	Fiber optic splice module handler, 1 RU
FOSMH4U	Fiber optic splice module handler, 4 RU
FSTHS	Fiber splice tray holder - used with FSTK
FMS1	Fiber management slack spool kit (2 per bag)
HLS-75R0	Hook & Loop roll, 75'L (22.9m), 0.75"W (19.1mm), Black

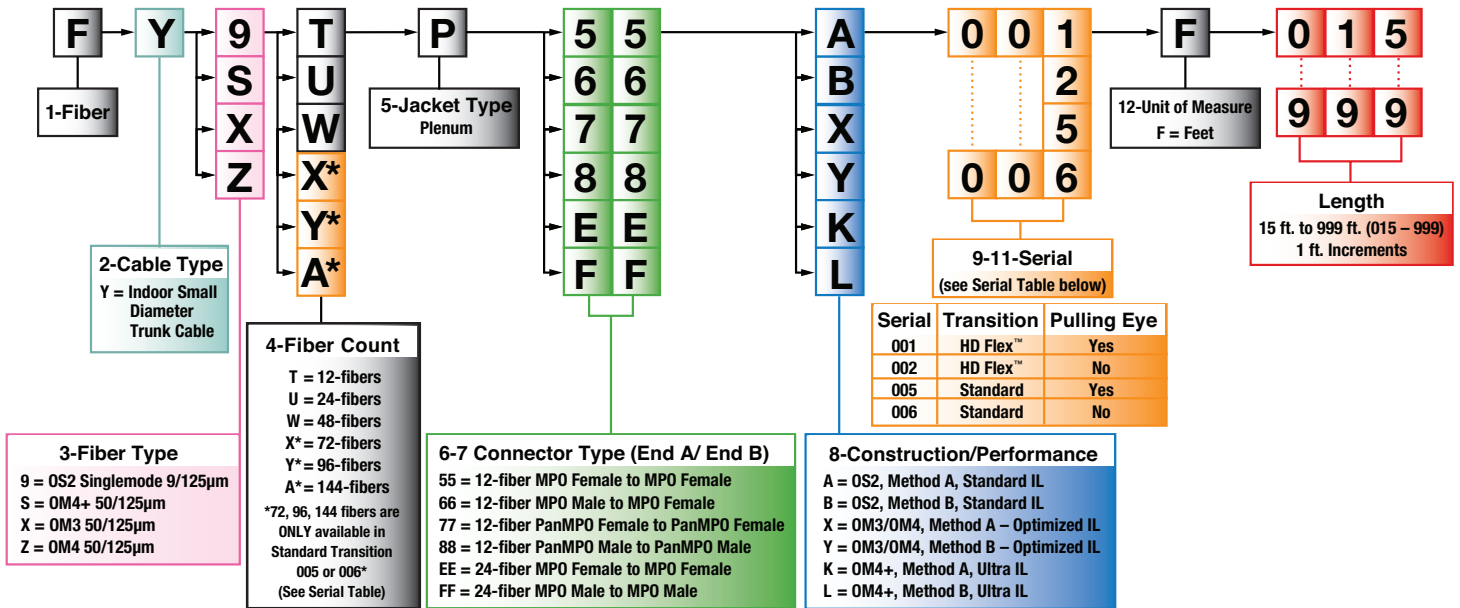
Replace "" with 1, 2, or 4 to order the appropriate RU version (ex: FLEX1U06 is a 1 RU, 6-Port, HD Flex™ Enclosure)

Choose Your Trunk Trunks (Build Your Part Number Below)

Configure Fiber Trunk part numbers in our online tool

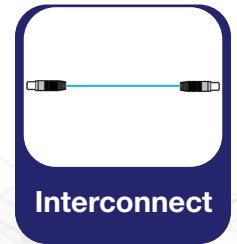


Trunk

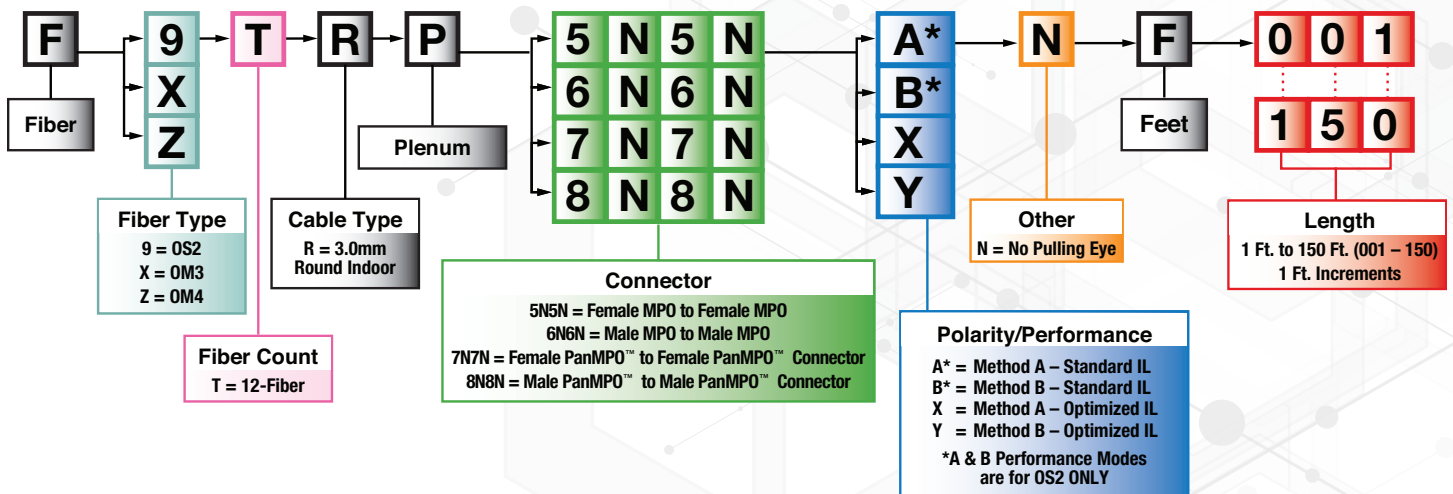


Example: FYXTP77Y001F030 - OM3 12-Fiber HD Flex™ Indoor Small Diameter Trunk, Plenum, 1 x 12F PanMPO™ Female with 1m breakout to 1 x 12F PanMPO™ Female with 1m breakout, Polarity B, Optimized IL, Pulling Eye End A - 30 Foot

Choose Your Interconnect Interconnects (Build Your Part Number Below)



Interconnect



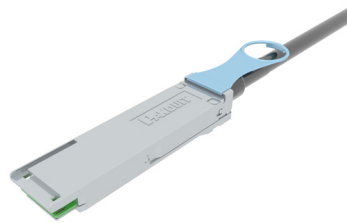
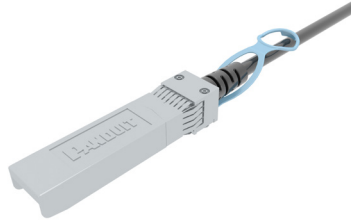
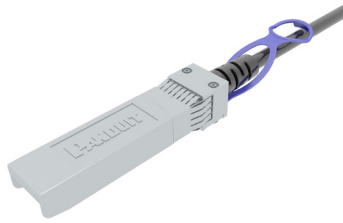
Example: FXTRP7N7NXNF001 - OM3 12-Fiber Interconnect Plenum, Female PanMPO™ Connector to Female PanMPO™ Connector, Method A, Optimized IL, No Pulling Eye - 1 Foot

Direct Attach Copper (DAC) Cable Assemblies

10 GbE SFP+, 25 GbE SFP28, and 100 GbE QSFP28 copper cable assemblies

Used at Access or Leaf layers, primarily Top of Rack architectures

100% production tested to exceed industry requirements



Passive SFP+

PSF1PXA1MBL
PSF1PXA2MBL
PSF1PXA3MBL
PSF1PXD4MBL
PSF1PXD5MBL

Passive SFP28

PSF2PZA1MBL
PSF2PZA2MBL
PSF2PZA3MBL
PSF2PZC4MBL
PSF2PZC5MBL

Passive QSFP28

PQSF2PXA1MBL
PQSF2PXA2MBL
PQSF2PXA3MBL
PQSF2PXC4MBL
PQSF2PXC5MBL

QSFP28 to (4) SFP28 Breakout Assemblies

PHQ4SFP2A1MBL
PHQ4SFP2A2MBL
PHQ4SFP2A3MBL
PHQ4SFP2C4MBL
PHQ4SFP2C5MBL

- High speed solution, most cost-effective interconnect for Data Centers
- 10 GbE SFP+, 25 Gb SFP28, and 100 Gb QSFP28 copper cable assemblies
- Used at Access or Leaf layers, primarily Top of Rack architectures
- 100% production tested to exceed industry requirements

Note: Wire Gauge Guide: 'A' in part number = 30 AWG, 'C' = 26 AWG

Note: BL (Black), BU (Blue), RD (Red), WH (White)

PANDUIT®

Panduit Corp.
World Headquarters
Tinley Park, IL 60487
800.777.3300
www.panduit.com