

**PANDUIT®**

  
**sm**artzone™ *cloud*

**PRODUCT BROCHURE**



# SmartZone™ Cloud

## How efficient is your Data Center?

As companies continue to shift and expand IT workloads in a distributed and hybrid digital infrastructure, data center operations have a critical role in securing the agility and continuity to keep the business relevant in the digital world. Having a complete understanding of power, environmental, asset utilization, and connectivity is even more important in this dynamic environment. This makes digital infrastructure management tools, in conjunction with existing system software management tools, critical to support the changing needs of your data center.

Maintaining real-time monitoring, dashboard visualization, alarm notification and reporting of key attributes across assets, power, environmental and connectivity, is a vital step in this evolution. Panduit's Next Generation Data Center Infrastructure Management (DCIM) solution provides accurate, automated and centralized visibility into the digital infrastructure that ensures stakeholders to achieve service-oriented goals. It enables you to make informed decisions to meet the demanding needs around capacity planning, remote management, and end-to-end service level agreements. This means that real-time information about your power, space and asset usage, environmental conditions, connectivity and cabinet access is now at your fingertips to provide complete data center infrastructure management.

Whether you are building a new data center, looking to better manage your existing one, hosting your IT infrastructure with a colocation provider or expanding it into multiple edge sites, Panduit has a solution – SmartZone™ Cloud.



## Why SmartZone™ Cloud?

SmartZone™ Cloud Software is an enterprise web-application hosted in the cloud that combines power and environment monitoring along with asset and connectivity management and cabinet access. It tracks critical infrastructure resources and provides visual representation of a rich set of asset attributes, connectivity, space availability, and power and environmental resources, to ensure that your digital infrastructure supports mission-critical applications and enables effective optimization of resources in your data center.



# SmartZone™ Cloud Software includes the following capabilities:

## Application



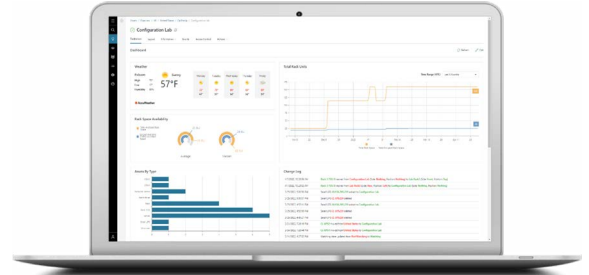
APPLICATION

### Features

- True cloud-native software, built from the ground up
- Full power and environmental monitoring and asset management available with a single license
- Multi-protocol, agent less auto-discoveries
- Unlimited users and locations
- 2D and 3D visualizations
- Easy to use dashboards and reports
- REST API with all product functionality documented

### Benefits

- Flexible and scalable
- Low total-cost of ownership
- Simple and quick to deploy
- Automate tasks through software integration
- Instant software updates and upgrades



## Security



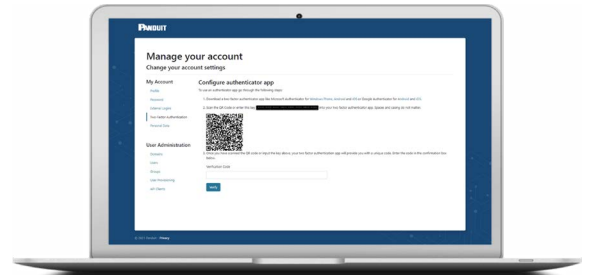
SECURITY

### Features

- Deployed on a security-hardened cloud infrastructure
- Encryption on data at rest and in transit
- Built-in security in the data collection
- Role-based user permission down to the asset level
- Two-factor authentication and Azure AD or Microsoft 365 single sign-on
- Audit logs for all changes in the application

### Benefits

- Meets compliance and regulatory requirements
- Highly available and resilient application
- Reduces human error



## Power and Environmental Monitoring



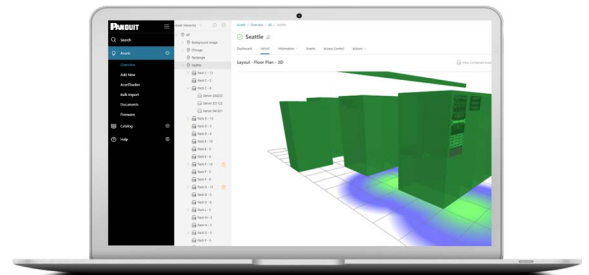
POWER

### Features

- Monitor rack power load and capacity and environmental conditions
- View capacity for proper load balancing and discovery of underutilized units
- Shows available and used rack power capacity
- Sets thresholds for notifications and alerts related toV power, temperature, and humidity
- Receives warning and critical alert notifications
- Provides historical power trends

### Benefits

- Reduces downtime risk and over provisioning cost
- Tracks PUE evolution over time
- Enhances equipment life and efficiency
- Analyzes trends for potential issues
- Realizes potential for increasing power load





## Asset Management

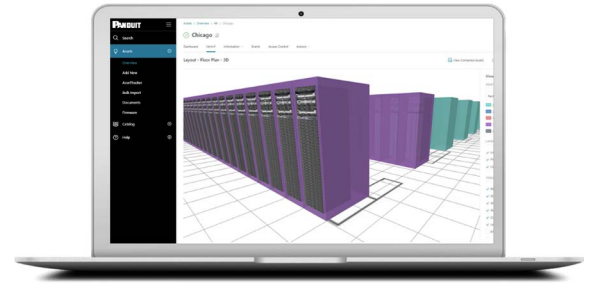


### Features

- Tracks the status of a physical or virtual asset throughout its lifecycle
- Quickly locates valuable assets
- Identifies available space for new equipment deployments
- Understands inventory of assets by type
- Shows the utilized rack and floor capacity based on asset, space and power
- Captures and adds asset attributes

### Benefits

- Faster move, adds, and changes because of accurate modeling
- Managing data makes central repository available
- Provides asset inventory and tracking
- Plan for future growth



## Rack Access

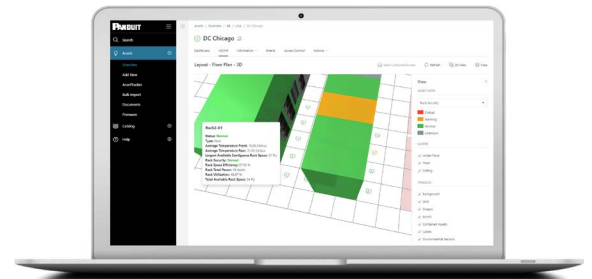


### Features

- Monitor front and rear rack doors using Panduit G5 iPDUs
- Provides alerts/events on door status and code/card failure
- Displays lock and door status on location tree, floorplan and dashboards

### Benefits

- Security and regulatory compliance
- Critical event responsiveness
- Reduce downtime risk and cost due to human errors
- Secure equipment and grant access from any location
- Help meet SAS 70, SSAE 16, SOC 2 and SOC 3



## Connectivity

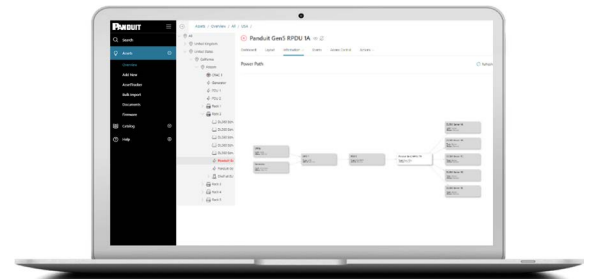


### Features

- Visualization of device connectivity and device status
- Provides an accurate representation of connectivity status for quicker change planning and issue resolution
- Monitor IT power chain devices

### Benefits

- Shortens connectivity troubleshooting time
- Understands impact analysis end-to-end



# PANDUIT®

Panduit Corp.  
World Headquarters  
Tinley Park, IL 60487

800.777.3300

[www.panduit.com/dcim](http://www.panduit.com/dcim)