

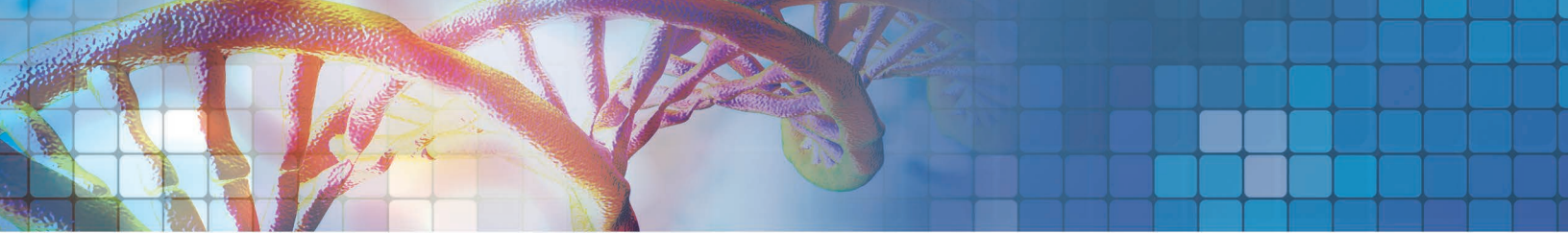
## Structured Cabling to Support Technology in Patient Rooms and Nurse Stations



As healthcare transitions from the fee-for-service model to value-based care, the importance of patient comfort and safety has drastically increased. People now shop for healthcare and place value on the amenities provided, the level of personal care they receive, and the efficiency and effectiveness of their medical team. Patient rooms look more like hotel rooms, and patients expect providers to adopt the latest technologies, yet still offer a personal touch to their care.

To achieve the look and feel that patients expect in their rooms while maintaining the medical services necessary to provide care, the patient room, nurse station, and medical equipment must seamlessly integrate without being visible. This results in many of the systems being wireless. Wireless medical technology provides real-time data collection and monitoring and reduces tripping hazards in the patient room and nurse station. Medical devices like vital sign monitors, infusion pumps, and anesthesia machines wirelessly transmit data to electronic patient records, giving doctors remote access to the information. Wearable sensors track patient movement, alerting the nursing staff when a patient leaves their bed or their room, or falls. With all of these systems relying on wireless data transmission, a robust physical infrastructure must exist behind the scenes to ensure top performance.

Panduit's structured cabling products enable fast, secure data transmission, efficient Power over Ethernet, and reliable wireless capabilities. Healthcare standards recommend Category 6A cabling, which supports Power over Ethernet and wireless deployment. Panduit's Category 6A products with MaTriX™ Technology have been designed specifically for these applications, and offer the bandwidth, heat dissipation, and durability required to support the increasing use of wireless technology in the patient room and nurse station.



## Horizontal Cable

Part Number	Part Description
PUP6AM04BU-UG	Category 6A U/UTP Copper Cable with Advanced MaTriX™ Technology, plenum, 4-pair, blue.
PUP6ASD04BU-UG	Category 6A Small Diameter U/UTP Copper Cable with Advanced MaTriX™ Technology, plenum, 4-pair, blue, 70-meter channel.

## Copper Patch Cords

UTP6ASD3BU	Category 6A Performance with MaTriX™ Technology, 26AWG, UTP Patch Cord, CM, Blue, 3ft.
UTP28X3BU	Category 6A Performance, 28AWG, UTP Patch Cord, CM/LSZH, Blue, 3ft.
UXPPBU10	Category 6A UTP cable assembly with modular plugs on each end. Blue, solid plenum cable, 10 ft.
BKA6ASD9INBL	Category 6A Break-Away Adapter, Black. For use with wired applications, releasing when pulling force is applied to reduce tripping hazards, and protect equipment and infrastructure.

## RJ45 Jack Modules

CJ6X88TGBU	Category 6A, RJ45, 8-position, 8-wire jack module with MaTriX™ Technology. Supports high-bandwidth applications and is ideal for running next generation Power over Ethernet (PoE++). UL Rated: UL 1863 and UL 2043.
CJH6X88TGBU	Category 6A, RJ45, 8-position, 8-wire jack module with MaTriX™ Technology and integrated shutter.
NK6X88MBU	Category 6A, 8-position, 8-wire keystone punchdown jack module.

## Zone Enclosures

PZICE	PanZone® Passive In-Ceiling Enclosure; With hinged door gas-assist air cylinders, accepts up to 8 RU of standard 19" patch panels, includes mounting brackets and integrated horizontal slack manager.
PZICEA	PanZone® Active In-Ceiling Enclosure with hinged door gas-assist air cylinders; accepts up to 6 RU of standard 19" patch panels, includes mounting brackets and integrated horizontal slack manager, AC power provisions, fan assembly, air dam, and electrical junction box.

## Stainless Steel Faceplates

CFPL4SY	Single gang, stainless steel vertical faceplate with label pockets; accepts 4 Mini-Com® modules.
---------	--

## Physical Security Products

PSL-DCJB	Jack module block-out device, 10 block-outs (red) and 1 removal tool (black), polycarbonate; blocks RJ45 port from unwanted users.
PSL-DCPL	RJ45 Plug lock-in device, not compatible with 10 gig cable, 10 devices (red) and 1 installation/removal tool (black), polycarbonate; locks RJ45 plugs into place.

See [www.panduit.com](http://www.panduit.com) for additional colors, sizes, cable jackets, and performance offerings.

