

## Network Infrastructure for Outpatient Facilities

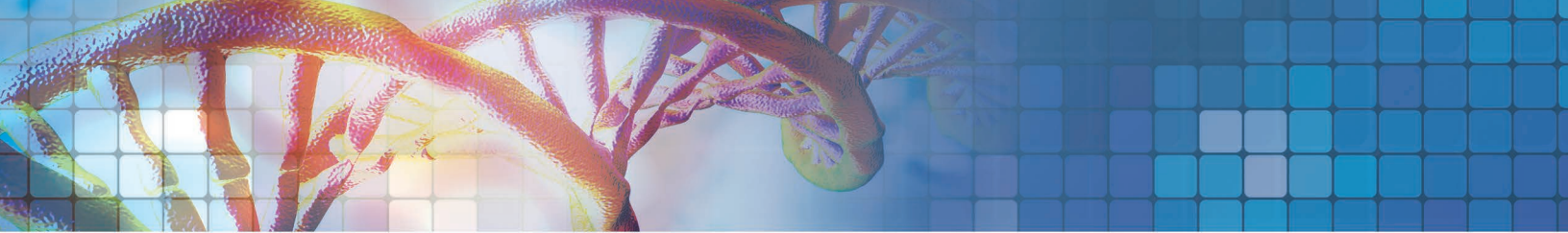


The healthcare industry has shifted from reactionary care to community wellness-based care, which has providers and developers investing in outpatient facilities rather than planning large new hospital projects. Medical advancements, convenience, and lower costs to serve are just a few of the catalysts contributing to this shift.

Despite the shrinking footprint of these smaller facilities, the technology inside continues to improve and increase in use. Networks must support bandwidth intensive applications and advanced audio/visual systems used with telemedicine, as well as an ever-increasing amount of data to store and retrieve.

Panduit offers a range of structured cabling products to support the latest Power over Ethernet standards and audio/video technology, allowing for greater energy efficiency and fast, reliable video transmission:

- Category 6A cabling solution with MaTriX™ technology supports mission-critical applications, and leads the industry in meeting the demands of the latest PoE standards
- When space is at a premium, our unique structured cabling designs offer a reduced footprint while providing the quality and performance you need without requiring additional space
- The NetKey® keystone cabling system delivers Category 6A performance to support daily network demands with an industry-compatible keystone footprint



## Horizontal Cable

Part Number	Part Description
PUP6AM04BU-UG	Category 6A U/UTP Copper Cable with Advanced MaTriX™ Technology, plenum, 4-pair, blue.
PUP6ASD04BU-UG	Category 6A Small Diameter U/UTP Copper Cable with Advanced MaTriX™ Technology, plenum, 4-pair, blue, 70-meter channel.

## Copper Patch Cords

UTP6ASD3BU	Category 6A Performance with MaTriX™ Technology, 26AWG, UTP Patch Cord, CM, Blue, 3ft.
UTP28X3BU	Category 6A Performance, 28AWG, UTP Patch Cord, CM/LSZH, Blue, 3ft.
UXPPBU10	Category 6A UTP cable assembly with modular plugs on each end. Blue, solid plenum cable, 10 ft.
BKA6ASD9INBL	Category 6A Break-Away Adapter, Black. For use with wired applications, releasing when pulling force is applied to reduce tripping hazards, and protect equipment and infrastructure.

## RJ45 Jack Modules

CJ6X88TGBU	Category 6A, RJ45, 8-position, 8-wire jack module with MaTriX™ Technology. Supports high-bandwidth applications and is ideal for running next generation Power over Ethernet (PoE++). UL Rated: UL 1863 and UL 2043.
CJH6X88TGBU	Category 6A, RJ45, 8-position, 8-wire jack module with MaTriX™ Technology and integrated shutter.
NK6X88MBU	Category 6A RJ45, 8-position, 8-wire keystone jack module. Supports high-bandwidth applications and is ideal for running next generation Power over Ethernet (PoE++).

## Patch Panels

CPPL24WBLY	24-port modular patch panel with labels, supplied with factory-installed front removable snap-in faceplates.
NKFP24Y	24-port modular patch panel, keystone, with front accessible faceplates.

## Faceplates

CFPL4SY	Single gang, stainless steel vertical faceplate with label pockets; accepts 4 Mini-Com® modules.
NKF4S	Single gang, stainless steel vertical faceplate with label pockets; accepts 4 keystone modules.
CFPL2IWY	Single gang, flush mount vertical faceplate with label pockets; accepts 2 Mini-Com® modules.
NK2FIWY	Single gang, flush mount vertical faceplate with label pockets; accepts 2 keystone modules.

## Wall-Mount Cabinets

PZC12P	PanZone® 12RU Hinged Wall Mount Cabinet with Perforated Front Door.
PZC12W	PanZone® 12RU Hinged Wall Mount Cabinet with Windowed Front Door.

## Racks

R2P	Standard 19" EIA Aluminum 45RU 2-Post rack with hardware kit and paint piercing bonding kit, numbered up.
R4P	Standard 19" EIA Steel 45RU 4-Post rack with hardware kit and paint piercing bonding kit, numbered up.

## Physical Security Products

PSL-DCJB	Jack module block-out device, 10 block-outs (red) and 1 removal tool (black), polycarbonate; blocks RJ45 port from unwanted users.
PSL-DCPL	RJ45 Plug lock-in device, not compatible with 10 gig cable, 10 devices (red) and 1 installation/removal tool (black), polycarbonate; locks RJ45 plugs into place.

See [www.panduit.com](http://www.panduit.com) for additional colors, sizes, cable jackets, and performance offerings.