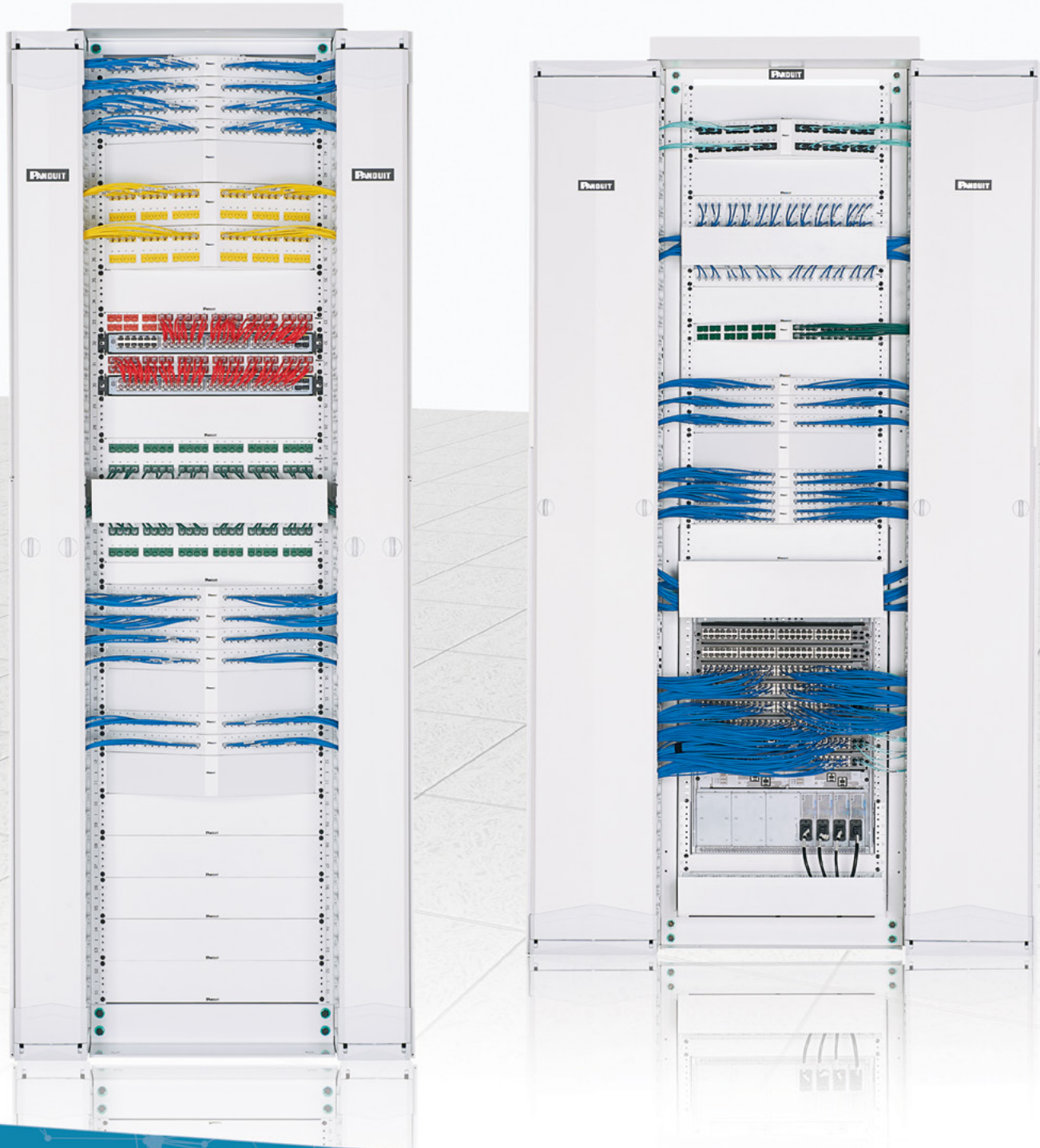


Space-Saving Cable Management Rack Systems



Maximize Space Utilization, Enhance Network Reliability

The trend towards consolidation, virtualization and automation in the enterprise is driving the need to maximize space utilization to reduce capital expenditures and operational costs while maintaining network reliability and availability. This trend is placing greater demands on the physical infrastructure to help manage growing cable densities, larger network equipment, and increasing energy usage.

Space Optimized, High Capacity Cable Management Systems

Panduit builds on years of experience as a leader in cable management, integrating best practices, and application knowledge to develop highly reliable and efficient physical infrastructure solutions. Our comprehensive offering of vertical cable management, horizontal cable management, and rack solutions reduces space required to route, manage and protect high cable capacities, providing the lowest total cost of ownership. These product sets can be combined to provide an optimized solution for virtually any application. PatchRunner 2 Enhanced Vertical Cable Manager with Vertical Patching and PatchRunner 2 Vertical Cable Management Systems address the needs of the data center and telecommunications rooms to deliver improved network performance and reduced real estate costs. Superior cable management features and innovative vertical RU mounting maximize capacity and enable efficient moves, adds, and changes to reduce operational costs.

PatchRunner™ 2 Enhanced Vertical Cable Management System with Vertical Patching

PatchRunner 2 Enhanced Vertical Cable Managers with Vertical Patching are optimized to provide the maximum amount of capacity, flexibility, and accessibility for high density switch and server applications.

PatchRunner™ 2 Vertical Cable Management System

PatchRunner 2 Vertical Cable Managers are designed to provide the best combination of features and value for high density enterprise telecommunications rooms and data center applications.

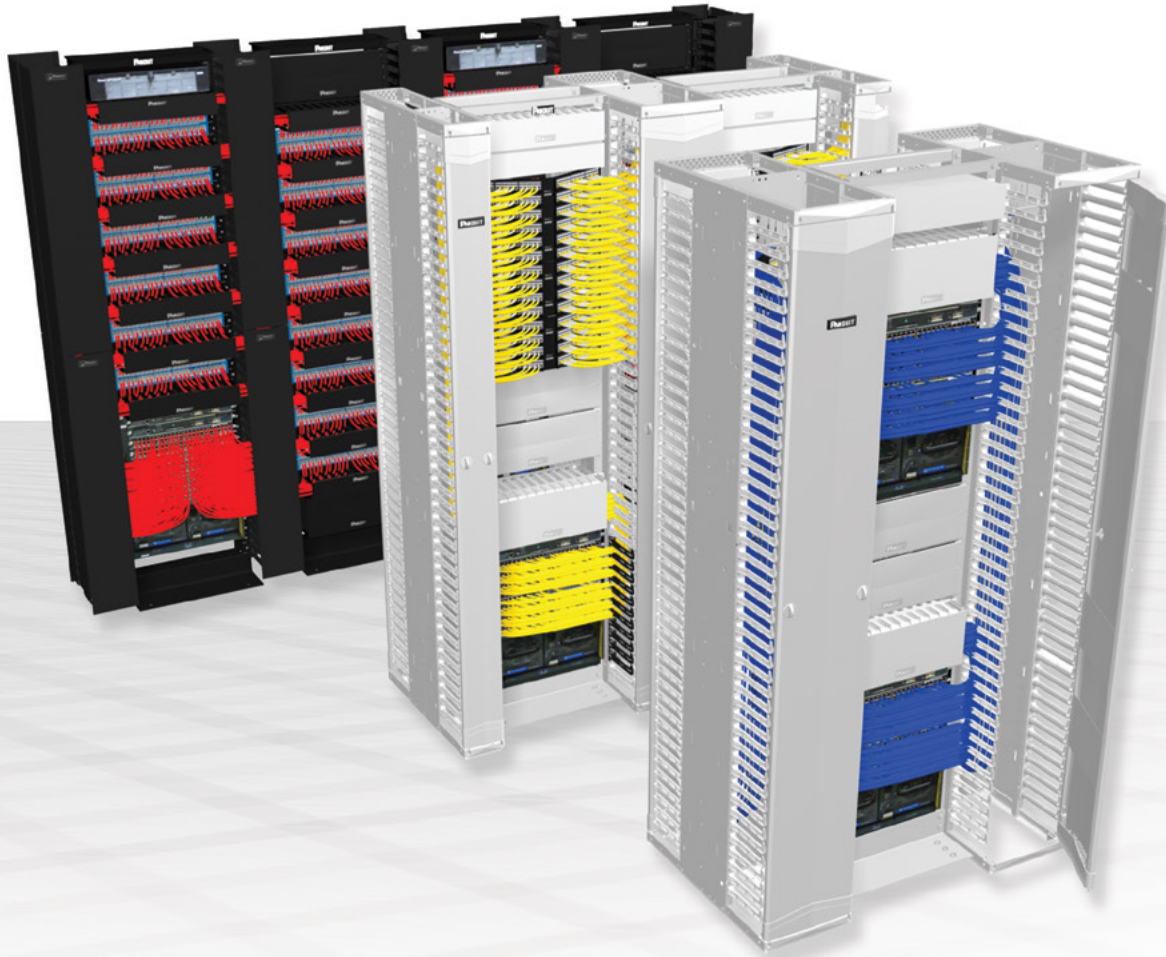
PatchRunner™ 2 Horizontal Cable Management System

PatchRunner 2 Horizontal Cable Managers are designed to provide a best-in-class user experience for horizontal managers. The aesthetics and depth of the managers match the PatchRunner 2 and PatchRunner 2 Enhanced Verticals Managers for an unparalleled system solution for telecommunication rooms and data center applications.

2-Post and 4-Post Racks

PatchRunner 2 Vertical Cable Manager and PatchRunner 2 Enhanced Vertical Cable Manager with Vertical Patching Systems can be seamlessly integrated into versatile 2-Post and 4-Post Racks. Designed for large network equipment, Racks provide strength, capacity, and thermal features that help ensure network availability. The 2-Post and 4-Post Rack thermal accessories provide proper heat dissipation of active equipment, improving network reliability.

Reduce Real Estate Cost and Space Utilization by **35%** with PatchRunner™ 2 Vertical Cable Management Systems



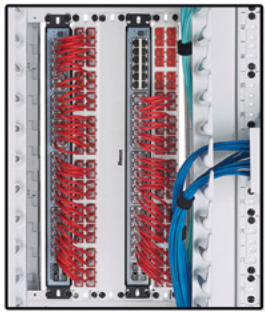
Floor Space Required

Layout	NetRunner Vertical Cable Management System	PatchRunner 2 Vertical Cable Management System	PatchRunner 2 Enhanced Vertical Cable Management System with Vertical Patching
Total Square Feet	38.9	20.1	12.5
Annual Real Estate Costs (Based on \$61/square foot, in a 10-TR building)	\$23,729	\$12,261	\$7,625
Lifetime Real Estate Costs (Based on a 50-year building life)	\$1,186,450	\$613,050	\$381,250

Refer to page 18 and 19 for capacity and space requirements for specific solutions.

PatchRunner™ 2 Enhanced Vertical Cable Manager Application

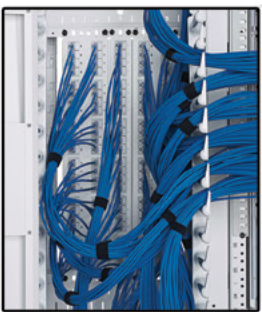
The right solution helps manage equipment, connectivity, and available space for maximum density, scalability, and usability. PatchRunner 2 Enhanced Vertical Cable Management System with Vertical Patching offers the highest cable capacities for maximum densities, scalability, and superior space utilization. The patching configuration is not a true application, but rather demonstrates versatility for customization to fit your requirements.



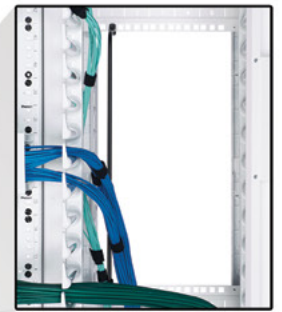
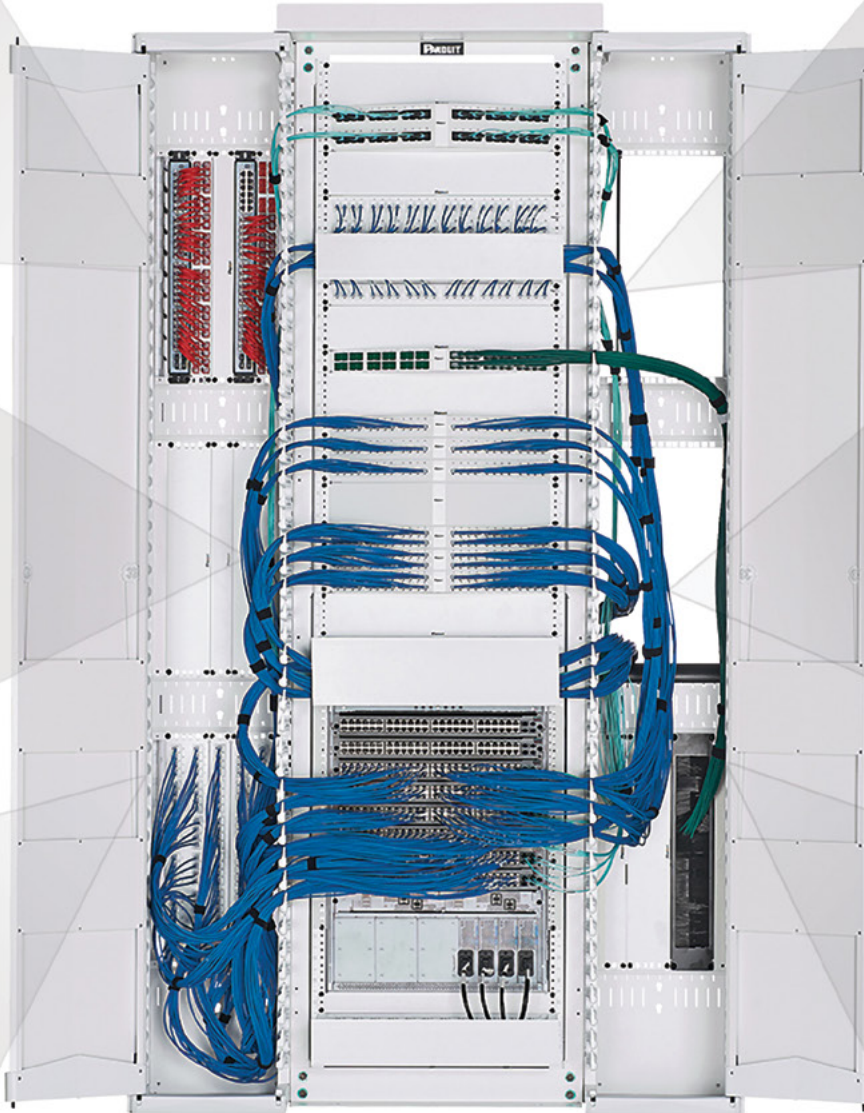
**Direct Switch Patching
with 8 inch Patch Cords**



Blanking Panels



Vertical Patching



**Various Accessories
Such as
Strain Relief Bars**



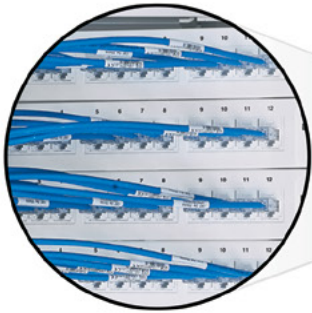
**Bend Radius
Control Clips**



**Brush-Panel Pass
Through Devices**

PatchRunner™ 2 Vertical Cable Manager Application

PatchRunner 2 Vertical Cable Manager is designed to manage high density networking equipment in, up to, half the area required by traditional cable management systems. The reduction in square footage combined with fewer components ordered, inventoried, and installed results in significant cost savings for the network infrastructure.



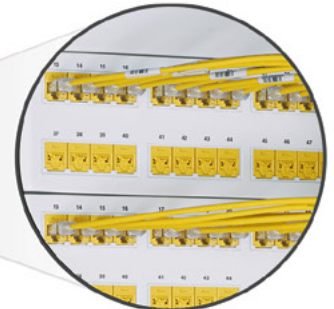
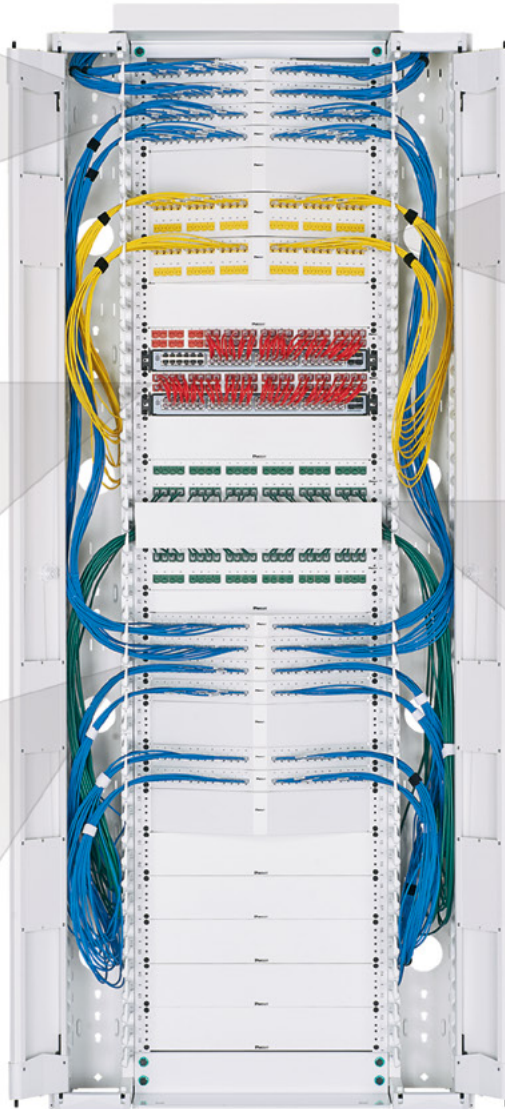
28 AWG Patch Cords



Direct Switch Patching with 8 inch Patch Cords



Angled Patch Panels



Block-Out Devices with Angled Patching



Block-Out Devices with Horizontal Cable Manager Patching

PatchRunner™ 2 Enhanced Vertical Cable Management System with Vertical Patching

1a 4-Post Rack

R4P
R4P23
R4P36
R4P42
R4P96



The capacity of this vertical manager is ideal for Category 6A cabling or other cabling systems. Integral EIA 0 RU mounting capability in the back of the manager allows equipment to be patched in the PatchRunner 2 Enhanced Vertical Cable Manager with Vertical Patching, freeing up valuable rack space for equipment and allowing the use of shorter length patch cords.

1b Adjustable Depth 4-Post Rack

AR4P
AR4P96

2a PE2VD06 – 6" wide

- PatchRunner 2 Enhanced Vertical Cable Manager with Vertical Patching (double-sided)
- Available in 6", 8", 10", and 12" widths
- Available in 6, 9, 12, and 15 vertical RU spacing



2b PE2VFD08 – 8" wide

- PatchRunner 2 Enhanced Vertical Cable Manager with Vertical Patching (single-sided)
- Available in 6", 8", 10", and 12" widths
- Available in 6, 9, 12, and 15 vertical RU spacing



3a CPPLA48WBLY – 2 RU, 48-Port

- Mini-Com Modular Patch Panel
- Comes with faceplates, labels, and label covers

3b CPPLA24WBLY – 1 RU, 24-Port

- Mini-Com Modular Patch Panel
- Comes with faceplates, labels, and label covers

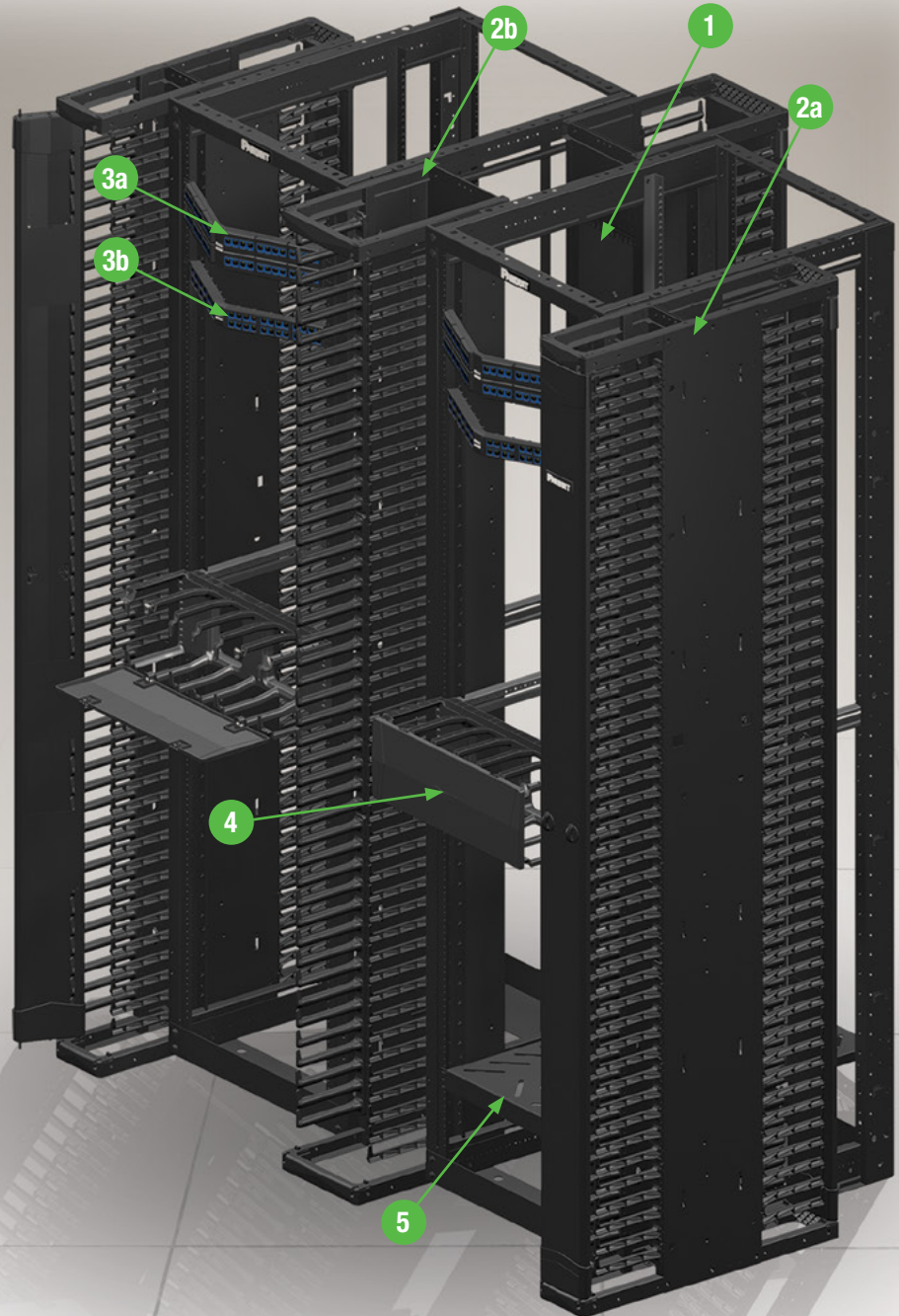
4 PR2HF4 – Horizontal Cable Manager, 4 RU

- PatchRunner 2 Horizontal Cable Manager
- Organizes and protects network cabling



5 RSHLF – 4-Post Rack Mount Shelf

- Uses equipment mounting flanges to support large network equipment
- 30" depth



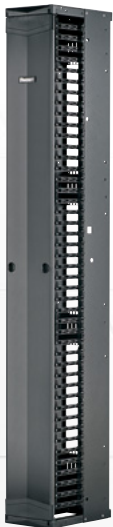
PatchRunner™ 2 Enhanced Vertical Cable Management System with Vertical Patching



- High capacity minimizes area required for network layout, freeing up valuable floor space
- Allows vertical mounting of many standard EIA 19" accessories, such as patch panels
- Closed off side panels provide better airflow management for hot and cold aisle air containment solutions
- Large finger spacing accommodates up to 48 Category 6A cables
- Best-in-class dual-hinged metal doors provide easy access to the vertical pathway and provide audible feedback when closing
- Doors ship with managers, simplifying ordering process with less packaging waste



PE2VD12



PE2VFD12

Part Number^	Height In. (mm)	Width In. (mm)	Depth In. (mm)	No. of Rack Units	Single or Double-Sided	No. of Doors Included	Vertical RU Spacing	Std. Pkg. Qty.
PE2VD06	84.0 (2130)	6.0 (152)	26.8 (681)	45	Double-Sided	2	6	1
PE2VD08	84.0 (2130)	8.0 (203)	26.8 (681)				9	
PE2VD10	84.0 (2130)	10.0 (254)	26.8 (681)				12	
PE2VD12	84.0 (2130)	12.0 (305)	26.8 (681)				15	
PE2VFD06	84.0 (2130)	6.0 (152)	16.3 (415)		Single-Sided	1	6	
PE2VFD08	84.0 (2130)	8.0 (203)	16.3 (415)				9	
PE2VFD10	84.0 (2130)	10.0 (254)	16.3 (415)				12	
PE2VFD12	84.0 (2130)	12.0 (305)	16.3 (415)				15	
PE2VSD06	84.0 (2130)	6.0 (152)	26.8 (681)		Double-Sided	1	6	
PE2VSD08	84.0 (2130)	8.0 (203)	26.8 (681)				9	
PE2VSD10	84.0 (2130)	10.0 (254)	26.8 (681)				12	
PE2VSD12	84.0 (2130)	12.0 (305)	26.8 (681)				15	
PE2VD0696	96.0 (2435)	6.0 (152)	26.8 (681)	52	Double-Sided	2	6	
PE2VD0896	96.0 (2435)	8.0 (203)	26.8 (681)				9	
PE2VD1096	96.0 (2435)	10.0 (254)	26.8 (681)				12	
PE2VD1296	96.0 (2435)	12.0 (305)	26.8 (681)				15	
PE2VFD0696	96.0 (2435)	6.0 (152)	16.3 (415)		Single-Sided	1	6	
PE2VFD0896	96.0 (2435)	8.0 (203)	16.3 (415)				9	
PE2VFD1096	96.0 (2435)	10.0 (254)	16.3 (415)				12	
PE2VFD1296	96.0 (2435)	12.0 (305)	16.3 (415)				15	
PE2VSD0696	96.0 (2435)	6.0 (152)	26.8 (681)		Double-Sided	1	6	
PE2VSD0896	96.0 (2435)	8.0 (203)	26.8 (681)				9	
PE2VSD1096	96.0 (2435)	10.0 (254)	26.8 (681)				12	
PE2VSD1296	96.0 (2435)	12.0 (305)	26.8 (681)				15	

^Insert WH for White offering Ex: AR4PWH.

PatchRunner™ 2 Vertical Cable Management System

1 2-Post Rack

R2P

84.0"H x 20.3"W x 30.0"D
45 RU aluminum

R2P79

79.0"H x 20.3"W x 30.0"D
45 RU aluminum

R2P96

96.0"H x 20.3"W x 30.0"D
52 RU aluminum



2 PR2VD12

- 12"W Front and Rear PatchRunner 2 Vertical Cable Manager with doors – 45 RU



3 PR2VWF

- Rack Top Trough with Waterfall creates pathway above rack



4 PR2VEP

- End Panel for PatchRunner 2 Vertical Cable Managers



5 CMPH2

- 2 RU Open-Access™ Horizontal Cable Manager D-rings



6 WMP1E

- 2 RU PatchLink™ Horizontal Cable Manager



7 NM2

- 2 RU NetManager™ High Capacity Horizontal Cable Manager



8 PR2HF4

- 4 RU PatchRunner 2 Horizontal Cable Manager

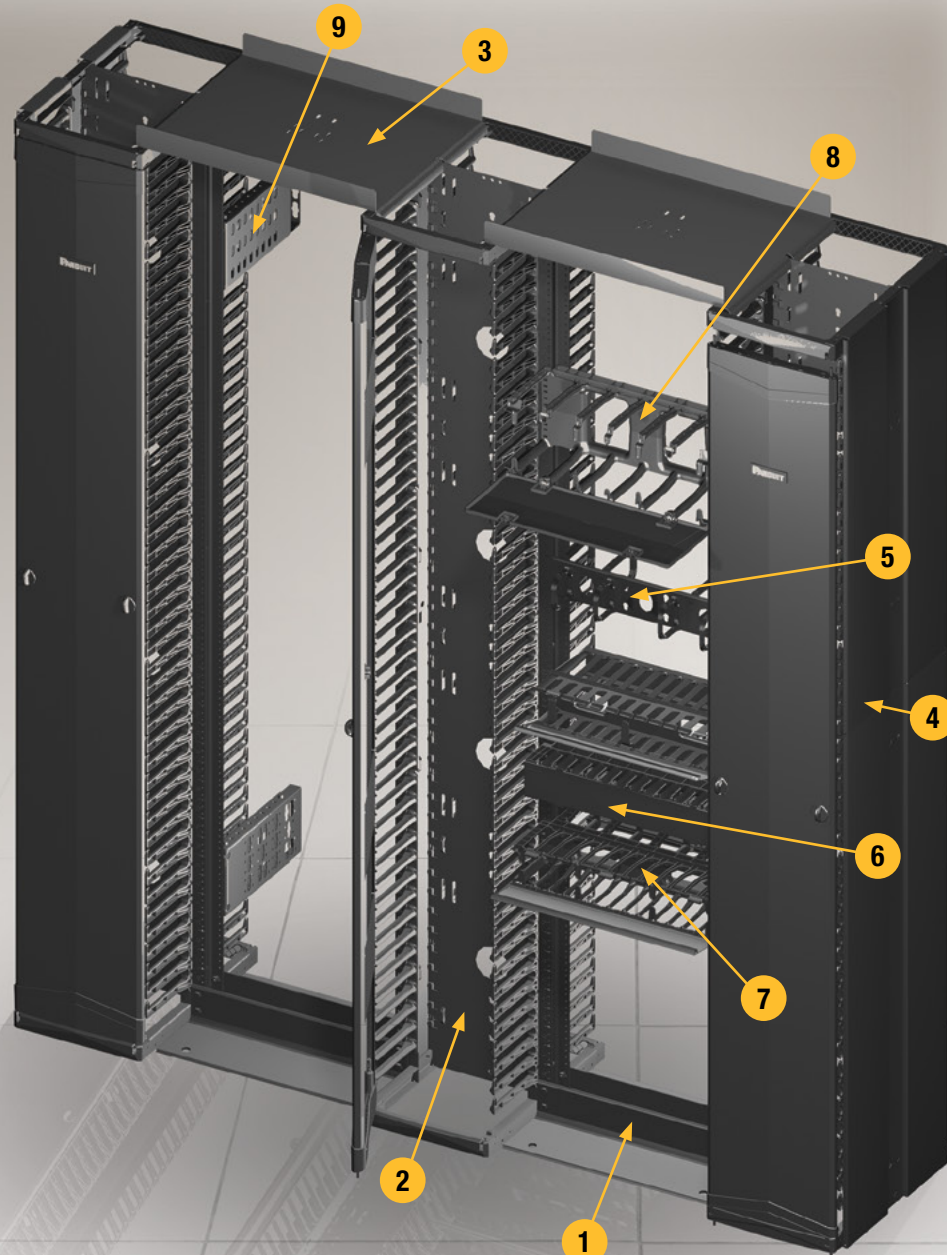


9 R2PPDUB

- Power Distribution Unit (PDU) bracket for 2-Post and 4-Post Racks



Provides cost effective solutions that organize, manage, protect and showcase network cabling while ensuring system performance and reliability. Optimal compatibility with racks, patch panels, and connectivity provides a complete end-to-end solution.



PatchRunner™ 2 Vertical Cable Managers

- A push-to-close door design allows for easy operation
- The doors ship with managers which simplifies the ordering process with less packaging waste
- There are no brackets to install, providing faster installation while reducing labor costs
- Managers and doors are available in black and white
- Individual fingers align with rack spaces to simplify cable routing changes

- The integral bend radius control ensures network performance and system reliability
- An optional snap-on vertical retainer can be placed on the fingers to help retain cables in channel for improved cable management and appearance
- An optional slack management spool helps organize and manage patch cord slack allowing for standardization of patch cord lengths



PR2VD12



PR2VFD06

Part Number^	Height In. (mm)	Width In. (mm)	Depth In. (mm)	No. of Rack Units	Single or Double-Sided	No. of Doors Included	Color	Std. Pkg. Qty.
PR2VD0679	79.0 (2003mm)	6.0 (152mm)	20.6 (523mm)	42	Double-Sided	2	Black (BL)	1
PR2VD1279		12.0 (305mm)						
PR2VFD0679		6.0 (152mm)	12.0 (305mm)		Single-Sided	1		
PR2VFD1279		12.0 (305mm)						
PR2VD06	84.0 (2130mm)	6.0 (152mm)	20.6 (523mm)	45	Double-Sided	2		
PR2VD08		8.0 (203mm)						
PR2VD10		10.0 (254mm)						
PR2VD12		12.0 (305mm)						
PR2VFD06	84.0 (2130mm)	6.0 (152mm)	12.0 (305mm)	45	Single-Sided	1		
PR2VFD08		8.0 (203mm)						
PR2VFD10		10.0 (254mm)						
PR2VFD12		12.0 (305mm)						
PR2VSD06	84.0 (2130mm)	6.0 (152mm)	20.6 (523mm)	45	Double-Sided	2		
PR2VSD08		8.0 (203mm)						
PR2VSD10		10.0 (254mm)						
PR2VSD12		12.0 (305mm)						
PR2VD0696	96.0 (2435mm)	6.0 (152mm)	12.0 (305mm)	52	Single-Sided	1		
PR2VD0896		8.0 (203mm)						
PR2VD1096		10.0 (254mm)						
PR2VD1296		12.0 (305mm)						
PR2VFD0696	96.0 (2435mm)	6.0 (152mm)	20.6 (523mm)	52	Double-Sided	1		
PR2VFD0896		8.0 (203mm)						
PR2VFD1096		10.0 (254mm)						
PR2VFD1296		12.0 (305mm)						
PR2VSD0696	96.0 (2435mm)	6.0 (152mm)	20.6 (523mm)	52	Double-Sided	1		
PR2VSD0896		8.0 (203mm)						
PR2VSD1096		10.0 (254mm)						
PR2VSD1296		12.0 (305mm)						

^Insert WH for White offering Ex: PR2VD10WH. 79-inch offerings come in black only.

4-Post Cable Management Rack System

1 4-Post Rack

R4P
#12-24 threaded
84.0"H x 23.3"W x 30.0"D
45 RU

R4P23
#12-24 threaded
84.0"H x 23.3"W x 23.0"D
45 RU

R4P36
#12-24 threaded
84.0"H x 23.3"W x 36.0"D
45 RU

R4P42
#12-24 threaded
84.0"H x 23.3"W x 41.5"D
45 RU

R4P96
#12-24 Threaded
84.0"H x 23.3"W x 96.0"D
45 RU

R4P36CN
Cage nut rails
84.0"H x 23.25"W x 36.0"D
45 RU

R4P42CN
Cage nut rails
84.0"H x 23.25"W x 41.5"D
45 RU

AR4P
#12-24 Threaded
84.1"H x 20.3"W x 23.0" - 42.0"D
45 RU

AR4P96
#12-24 Threaded
96.1"H x 20.3"W x 23.0" - 42.0"D
52 RU



Deep 4-Post Open Server Racks provide the necessary environment for high density server applications. The open design assures maximum ventilation while minimizing air mixing in hot/cold aisle configurations. Space in the rear of the 4-Post Racks allows for server power, cable management and patching, providing an efficient and functional server solution.

2 R4PFP

- Vertical Blanking Panel



3 CVPDUB

- PDU Mounting Brackets



4 CVPPB

- Vertical Patch Panel Mounting Bracket



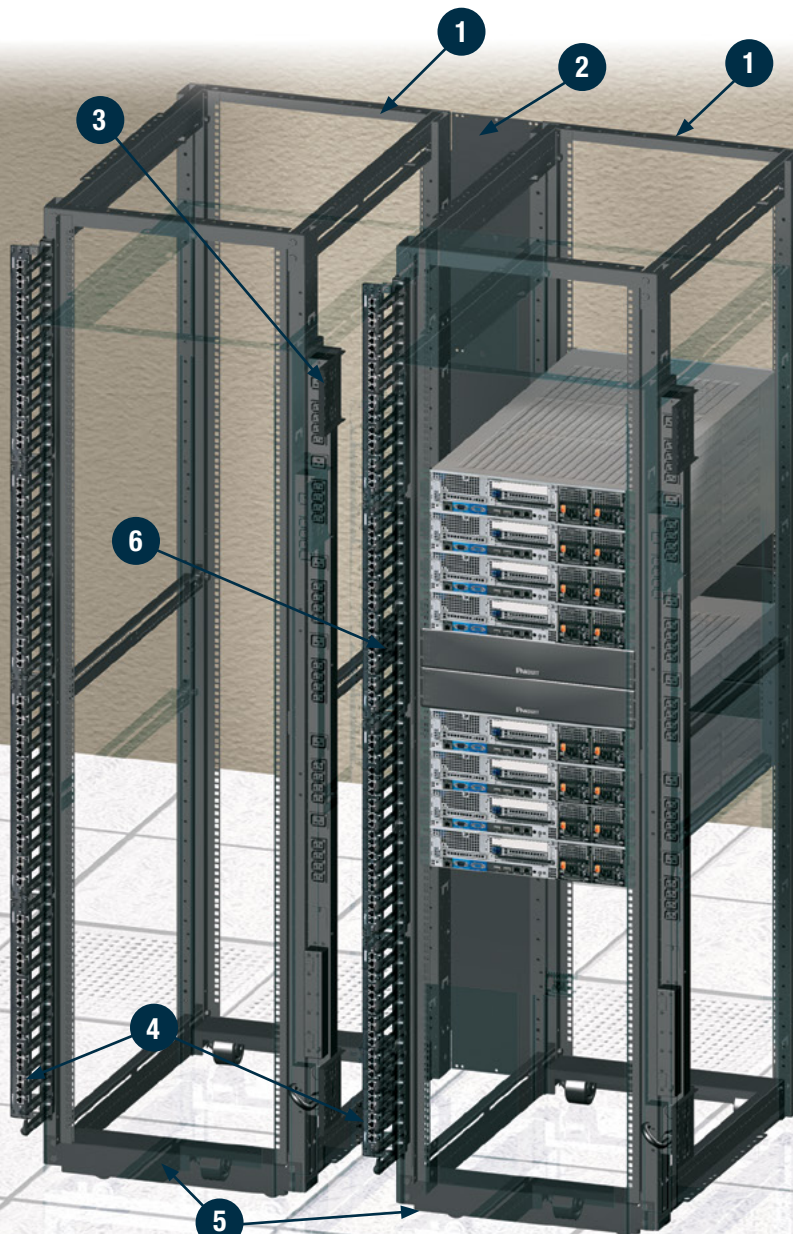
5 RCSTR

- Caster set
- Only compatible with R4P*^



6 R4PFL

- Vertical finger section for cable management



4-Post Rack System configured for server application.

4-Post Cable Management Rack System and Accessories

- Independent adjustable front and rear mounting rails can be adjusted while the rack is secured to the floor
- Printed rack space identification on all equipment rails allows for quick location of rack spaces (shipped numbers up per TIA-606 specifications; can be set to number down by flipping the rails)
- Multiple mounting holes in top flanges for securing overhead pathways
- Weld nut construction eliminates the need for a second wrench increasing speed and ease of assembly
- Vertical cable managers mount directly to the 4-Post Rack at any of the four corners
- Paint piercing washers included to electrically bond rack for simplified grounding



Part Number	Height In. (mm)	Width In. (mm)	Depth In. (mm)	Load Rating Lbs. (kg)	No. of Rack Spaces‡	Std. Pkg. Qty.
4-Post Rack #12-24 Threaded Rail						
R4P*^	84.0 (2134)	23.3 (591)	30.0 (762)	2500 (1134)	45	1
R4P23*^			23.0 (584)			
R4P36*^			36.0 (914)			
R4P42*^			41.5 (1054)			
R4P96*^			96.0 (2441)			

Part Number	Height In. (mm)	Width In. (mm)	Depth In. (mm)	No. of Rack Units	Equipment Rails	Color
Adjustable Depth 4-Post Rack						
AR4P^	84.13 (2136.9)	20.31 (515.9)	23.0 to 42.0 (584.2 to 1066.8) in increments of 0.5" (13mm)	45	#12-24 Threaded	Black (BL)
AR4P96^	96.13 (2441.7)			52		
AR4PCN^	84.13 (2136.9)			45	Cage Nut	
AR4PCN96^	96.13 (2411.7)			52		

Part Number	Description	Height In. (mm)	Width In. (mm)	Depth In. (mm)	Load Rating Lbs. (kg)	No. of Rack Spaces‡	Std. Pkg. Qty.
4-Post Rack Accessories							
RSHLF	4-Post Rack Mount Shelf	1.7 (44)	19.0 (483)	30.0 (762)	275 (124.7)	1	1
RSHLF23				23.0 (584)			
RSHLF36				36.0 (914)			
RCTR	4-Post Rack Casters	—	—	—	—	—	—
CVPPB	Bracket to vertically mount 1 RU 19" EIA copper and fiber patch panels to the side of the Net-Access™ Cabinet Posts or 4-Post Racks	—	—	—	—	—	—
CVPDUB^	Bracket for vertical POU mounting to the side of the Net-Access™ Cabinet post or 4-Post Racks (kit of 2)	—	—	—	—	—	—
CMBRC5E	Bend Radius Control Finger Section	—	—	—	—	5	1



CVPPB



*For 7' 4-Post Rack Cage Nut Rail add suffix CN to the end of the part number, for example, R4P23CN.
 Note: For 8' 4-Post Rack Threaded Rail, add suffix 96 to the end of the part number, for example, R4P2396.
 For 8' 4-Post Rack Cage Nut, add suffix CN96 to the end of the part number, for example, R4P23CN96.

‡One rack space = 1.75" (44.45mm).

^Insert WH for White offering Ex: R4PWH. Except for R4P23CN and R4P96CN

2-Post Cable Management Rack System and Accessories

- Printed rack space identification on all equipment rails allows for quick location of rack spaces; numbers up per TIA-606 specifications
- Double-sided #12-24 EIA universal mounting hole spacing
- 24 #12-24 mounting screws included
- When mounting NetRunner Managers to channel rack R2P6S, utilize side mount kit WMPVSMK
- Multiple mounting hole locations in each base angle
- Can be used with all cable management and patch panel products in addition to any industry standard 19 inch components
- Paint piercing washers included to electrically bond rack for simplified grounding; for the complete grounding solution, StructuredGround™ Kits for racks



Part Number	Part Description	No. of Rack Spaces‡	Std. Pkg. Qty.	Color
-------------	------------------	---------------------	----------------	-------

3" Channel 2-Post Rack

R2P^	19" EIA rack, aluminum	45	1	Black (BL)
R2P48	19" EIA rack, aluminum	24		
R2P79	19" EIA rack, aluminum	45		
R2P96	19" EIA rack, aluminum	52		
R2PW	23" EIA rack, aluminum	45		
R2PS	19" EIA rack, steel			

6" Channel 2-Post Rack

R2P6S	19" EIA rack, aluminum	45	1	Black (BL)
R2P6S96	19" EIA rack, aluminum	52		

Rack Mount Shelves

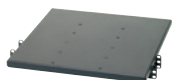
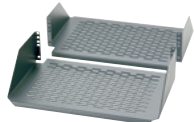
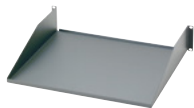
SRM19FM1	19" front mount shelf, steel	1	1	Black (BL)
SRM19FM2		2		
SRM19CMV3	19" cantilevered shelf, vented aluminum. Includes two-piece shelf that mounts to front and back of EIA racks.	3		
SRM19CM3				
SRM19X18A1	19" adjustable mount shelf, steel Mounts to front and back of EIA racks	1		
SRM19X25A1				

Accessories

RFAKIT	Rack anchor kit for concrete floor (set of four)	—	1	Black (BL)
R2PPDUB	Power Distribution Unit (PDU) bracket for 2-Post and 4-Post Racks (set of two)			
PE2VWF	Waterfall trough for use with 2-Post and 4-Post Racks and PatchRunner 2 Enhanced Vertical Cable Managers			
S1224-C	#12-24 x 0.5" mounting screws			

‡One rack space = 1.75" (44.45mm).

^Insert WH for White offering Ex: R2PW.



High Capacity Horizontal Cable Management Systems

PatchRunner™ 2 Horizontal Cable Managers

- Features a high-density design which maximizes the use of valuable rack space in a data center
- Built in cable retainers that help keep cables securely in place. Can prevent accidental disconnections and reduce the risk of damage to cables
- Flexible fingers that maintain the proper bend radius for cables which can prevent damage to cables and ensure proper signal quality is maintained
- Can be mounted to 2-Post and 4-Post Racks ensuring the system is compatible with the rack infrastructure already in place



PR2HF2



NM2B

Part Number	Height In. (mm)	Width In. (mm)	Depth In. (mm)	No. of Rack Spaces‡	Single or Double-Sided	No. of Doors Included	Color
19" Manager, Front Only							
PR2HF2 [^]	3.5 (88)	19.0 (483)	7.9 (202)	2	Single	1	Black (BL)
PR2HF3 [^]	5.2 (133)			3			
PR2HF4 [^]	7.0 (177)			4			

Accessories

Part Number	Description	Std. Pkg. Qty.	Color
NM2B	Front to rear pass through blanking panel for PatchRunner 2 Horizontal Cable Managers, PR2HF2 and PR2HF2WH	1	Black (BL)
NM3B	Front to rear pass through blanking panel for PatchRunner 2 Horizontal Cable Managers, PR2HF3 and PR2HF3WH		
NM4B	Front to rear pass through blanking panel for PatchRunner 2 Horizontal Cable Managers, PR2HF4 and PR2HF4WH		

[^]Insert WH for White offering Ex: PR2HF2WH.

‡One rack space = 1.75" (44.45mm).

NetManager™ High Capacity Horizontal Cable Managers

- Innovative inset fingers slope inward toward back of managers offering unobstructed access to network cabling for easier moves, adds, and changes
- Rear cable management finger spacing utilizes open D-rings for greater accessibility
- Can be used to create large capacity horizontal pathways for routing cable
- Patented front and rear dual hinged cover allows cable access without removing cover
- Pass-through holes allow for front to rear cabling Built-in cable retainers hold cable in place for easy moves, adds, and changes
- Covers and #12-24 mounting screws included with order
- Recommended for use with NetRunner WMPVHC45E Vertical Manager or PatchRunner 2 Vertical Managers



NM1



NMF3



NM1B



NM3B

Part Number	Height In. (mm)	Width In. (mm)	Depth In. (mm)	No. of Rack Units‡	Std. Pkg. Qty.	Color
19" Manager, Front and Rear						
NM1 [^]	1.7 (44)	19.0 (483)	13.1 (332)	1	1	Black (BL)
NM2 [^]	3.5 (88)			2		
NM3 [^]	5.2 (133)			3		
NM4 [^]	7.0 (177)			4		

19" Manager, Front Only

NMF1 [^]	1.7 (44)	19.0 (483)	6.2 (157)	1	1	Black (BL)
NMF2 [^]	3.5 (88)			2		
NMF3 [^]	5.2 (133)			3		
NMF4 [^]	7.0 (177)			4		

Accessories

Part Number	Description	Std. Pkg. Qty.
NM1B	Front to rear pass through blanking panel for NetManager High Capacity Horizontal Cable Managers, NM1 and NMF1	1
NM2B	Front to rear pass through blanking panel for NetManager High Capacity Horizontal Cable Managers, NM2 and NMF2	
NM3B	Front to rear pass through blanking panel for NetManager High Capacity Horizontal Cable Managers, NM3 and NMF3	
NM4B	Front to rear pass through blanking panel for NetManager High Capacity Horizontal Cable Managers, NM4 and NMF4	

[^]Insert WH for White offering Ex: NM1WH.

‡One rack space = 1.75" (44.45mm).

Horizontal Cable Management Systems

PatchLink™ Horizontal Cable Managers

- Lightweight plastic construction provides durability and easy installation
- Patented dual hinged cover allows cable access without removing cover
- Flexible fingers allows easy installation and removal of cables
- Rounded edges on fingers protect cables from snags and damage to cable
- Pass-through holes allow front to rear cabling
- Covers and #12-24 mounting screws included
- Recommended for use with NetRunner WMPVHC45E and WMPVHCF45E Vertical Managers

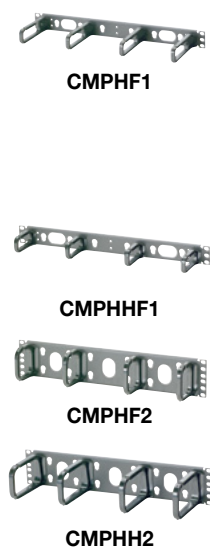


Part Number	Height In. (mm)	Width In. (mm)	Depth In. (mm)	No. of Rack Units‡	Single or Dual-Sided	Color
19" Manager, Front and Rear						
WMPSE	1.7 (44)	19.0 (483)	8.9 (226)	1	Dual-Sided	Black (BL)
WMP1E	3.5 (89)			2		
19" Manager, Front Only						
WMPFSE	1.7 (44)	19.0 (483)	2.7 (69)	1	Single-Sided	Black (BL)
WMPF1E	3.5 (89)		3.7 (94)	2		

‡One rack space = 1.75" (44.45mm).

Open-Access™ Horizontal Cable Managers

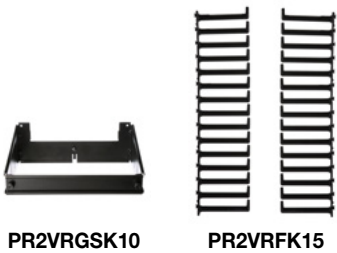
- Pass-through holes allow front to rear cabling
- D-ring managers provide an open and efficient way to manage cable
- Patented D-ring design provides flexibility for easy moves, adds, and changes
- D-ring managers provide an open and efficient way to manage cable
- Pass-through holes allow front to rear cabling
- Patented D-ring design provides flexibility for easy moves, adds, and changes



Part Number	Height In. (mm)	Width In. (mm)	Depth In. (mm)	No. of Rack Units‡	Std. Pkg. Qty.	Color
19" Manager, Front and Rear						
CMPH1	1.7 (44)	19.0 (483)	13.1 (332)	1	1	Black (BL)
CMPH2	3.5 (89)			2		
19" Manager, Front Only						
CMPHF1	1.7 (44)	19.0 (483)	3.4 (87)	1	1	Black (BL)
CMPHFF1						
CMPHF2	3.5 (89)	3.4 (87)	2			
CMPHH2						

‡One rack space = 1.75" (44.45mm).

PatchRunner™ 2 Accessories



Part Number	Part Description	Color	Std. Pkg. Qty.	Std. Ctn. Qty.	
Accessories					
PR2VEP [^]	End Panel for use with double-sided 45 RU PatchRunner 2 Vertical Cable Managers	Black (BL)	1	-	
PR2VEP96 [^]	End Panel for use with double-sided 52 RU PatchRunner 2 Vertical Cable Managers				
PE2VEP [^]	Enhanced End Panel for use with double-sided 45 RU PatchRunner 2 Vertical Cable Managers				
PE2VEP96 [^]	Enhanced End Panel for use with dual-sided 52 RU PatchRunner 2 Vertical Cable Managers				
PR2VWF [^]	PatchRunner 2 Waterfall for use with 2-Post and 4-Post Racks				
PE2VWF [^]	PatchRunner 2 Enhanced Waterfall for use with 2-Post and 4-Post Racks				
PR2VBPK	PatchRunner 2 Pass-Through Hole Blanking Plugs, Kit of five plugs				10
PR2VGK	PatchRunner 2 Pass-Through Hole Grommet Kit, Kit of five grommets				
PR2VRGSK06	Rear Gate System Kit for use with 6" wide single-sided PatchRunner 2 Vertical Cable Managers, Kit of four gates				
PR2VRGSK08	Rear Gate System Kit for use with 8" wide single-sided PatchRunner 2 Vertical Cable Managers, Kit of four gates				
PR2VRGSK10	Rear Gate System Kit for use with 10" wide single-sided PatchRunner 2 Vertical Cable Managers, Kit of four gates				
PR2VRGSK12	Rear Gate System Kit for use with 12" wide single-sided PatchRunner 2 Vertical Cable Managers, Kit of four gates				
PR2VRFK15 [^]	Replacement 15-Finger Kit for PR2V/PE2V Vertical Managers, one left and one right section				
PR2VRFK6 [^]	Replacement 6-Finger Kit for top section of 8 ft. PR2V/PE2V Vertical Managers, one left and one right section				
PRSP7	Slack Spool for PR2V/PE2V Managers, 7" depth		10		
PRSP5	Molded plastic slack spool, 5" depth				
WR5E-X	Snap-on finger cable retainers	10	100		

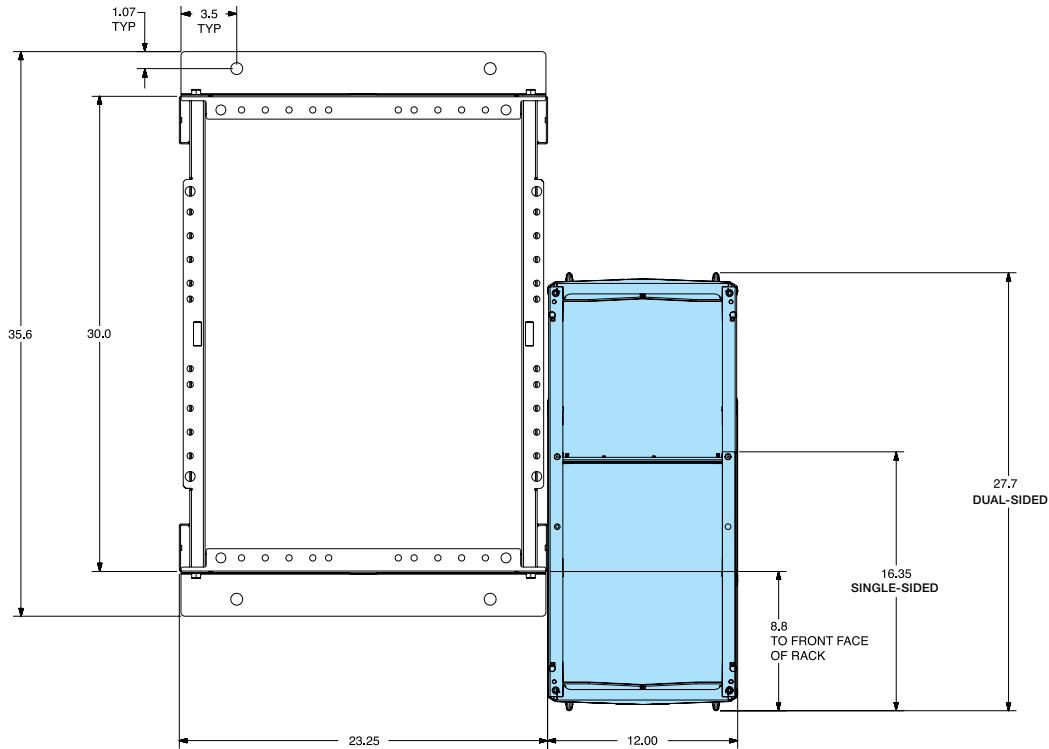
[^]Insert WH for White offering Ex: PR2VEPWH.

PatchRunner™ 2 Enhanced Vertical Cable Manager

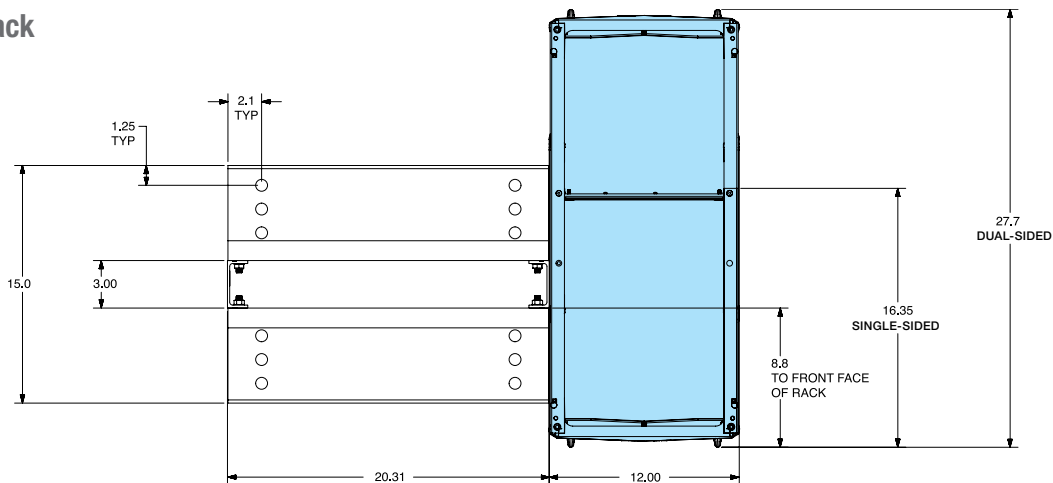
Specifications

- Dual-sided cable managers, having 60% of total cable capacity on one side and 40% on the other, allow optimized capacity placement on either side of the rack
- Cable managers have multiple mounting locations to the side of the rack, allowing optimal cable routing and space utilization
- When using a dual-sided cable manager in an inter-connect network architecture, the 60% side of the cable manager can be orientated towards the patching side of the rack to manage a higher number of patch cords
- When using a dual-sided cable manager in a cross-connect network architecture, the 60% side of the cable manager can be orientated towards the cabling side of the rack to manage a higher number of cables

4-Post Rack



2-Post Rack



PatchRunner™ 2 Vertical Cable Manager

Specifications

- PatchRunner 2 Vertical Cable Managers are specifically designed for cable capacities typically found in telecommunication rooms using medium to large enterprise switches

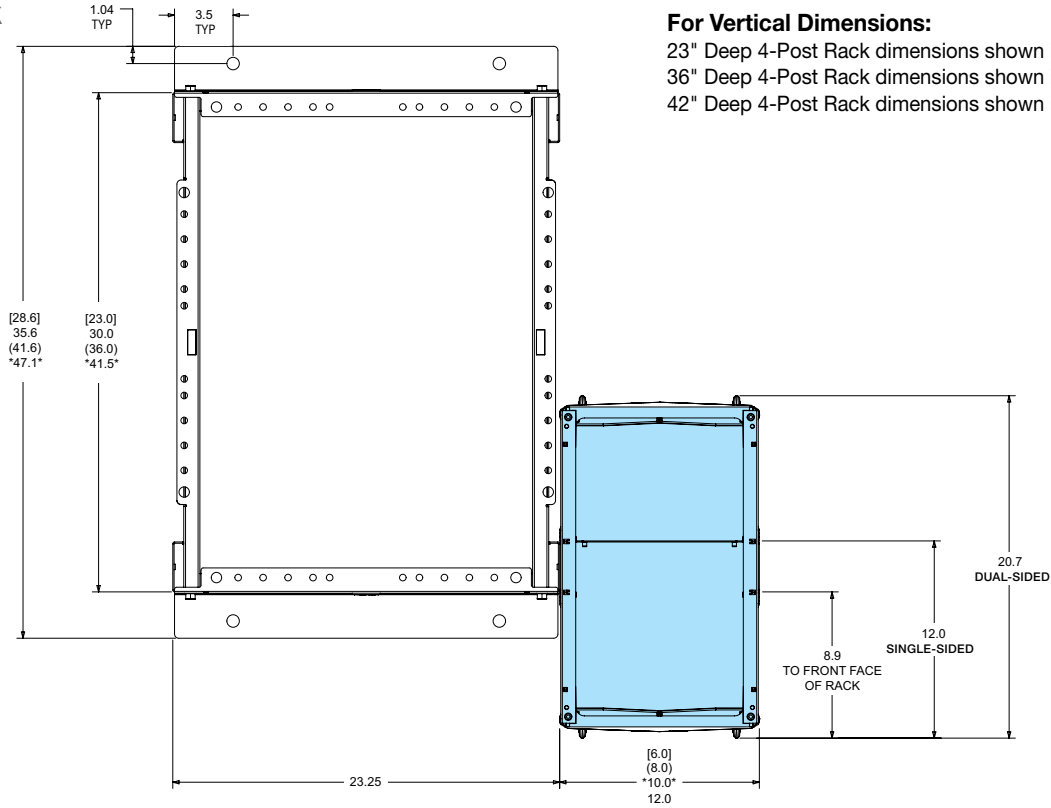
For Horizontal Dimensions:

- 6" Vertical Manager dimensions shown in brackets [...]
- 8" Vertical Manager dimensions shown in parenthesis (...)
- 10" Vertical Manager dimensions shown in asterisk "...*

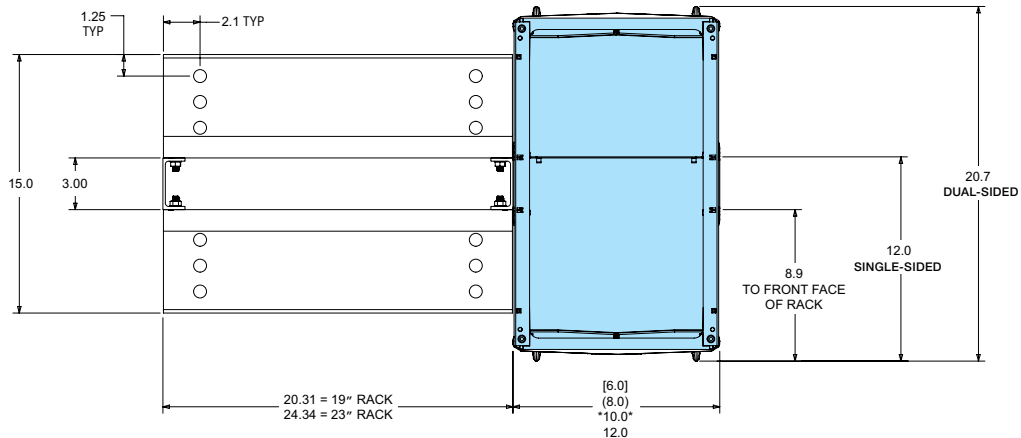
For Vertical Dimensions:

- 23" Deep 4-Post Rack dimensions shown in brackets [...]
- 36" Deep 4-Post Rack dimensions shown in parenthesis (...)
- 42" Deep 4-Post Rack dimensions shown in asterisk "...*

4-Post Rack



2-Post Rack



Cable Capacity Charts (inches)

Product Family	Part Number	Description	Recommended Cable Fill (30%)								Maximum Cable Fill (50%)							
			Front Side				Rear Side				Rear Side				Rear Side			
			Cat. 6A (28 AWG - 0.185 In.)	Cat. 6A (24 AWG - 0.275 In.)	Cat. 6 (28 AWG - 0.150 In.)	Cat. 6 (24 AWG - 0.235 In.)	Cat. 6A (28 AWG - 0.185 In.)	Cat. 6A (24 AWG - 0.275 In.)	Cat. 6 (28 AWG - 0.150 In.)	Cat. 6 (24 AWG - 0.235 In.)	Cat. 6A (28 AWG - 0.185 In.)	Cat. 6A (24 AWG - 0.275 In.)	Cat. 6 (28 AWG - 0.150 In.)	Cat. 6 (24 AWG - 0.235 In.)	Cat. 6A (28 AWG - 0.185 In.)	Cat. 6A (24 AWG - 0.275 In.)	Cat. 6 (28 AWG - 0.150 In.)	Cat. 6 (24 AWG - 0.235 In.)
PR2V PatchRunner 2 Vertical Cable Managers	PR2VD06	6" wide	503	839	227	379	765	1276	312	520	304	507	137	229	462	771	188	314
	PR2VFD06	6" wide, front only	503	839	227	379	765	1276	312	520	0	0	0	0	0	0	0	0
	PR2VD08	8" wide	711	1185	321	536	1081	1802	440	734	443	739	200	334	674	1124	274	457
	PR2VFD08	8" wide, front only	711	1185	321	536	1081	1802	440	734	0	0	0	0	0	0	0	0
	PR2VD10	10" wide	918	1531	415	692	1397	2328	569	948	582	971	263	439	886	1477	361	601
	PR2VFD10	10" wide, front only	918	1531	415	692	1397	2328	569	948	0	0	0	0	0	0	0	0
	PR2VD12	12" wide	1126	1876	509	849	1712	2854	697	1163	721	1203	326	544	1098	1830	447	745
	PR2VFD12	12" wide, front only	1126	1876	509	849	1712	2854	697	1163	0	0	0	0	0	0	0	0
PE2V PatchRunner 2 Enhanced Vertical Cable Managers with Vertical Patching	PE2VD06	6" wide	737	1229	333	556	1122	1870	457	762	494	823	223	372	751	1252	306	510
	PE2VFD06	6" wide, front only	737	1229	333	556	1122	1870	457	762	0	0	0	0	0	0	0	0
	PE2VD08	8" wide	1032	1720	467	778	1570	2616	639	1066	704	1173	318	531	1071	1785	436	727
	PE2VFD08	8" wide, front only	1032	1720	467	778	1570	2616	639	1066	0	0	0	0	0	0	0	0
	PE2VD10	10" wide	1326	2210	600	1000	2017	3363	822	1370	9114	1524	413	689	1391	2319	566	944
	PE2VFD10	10" wide, front only	1326	2210	600	1000	2017	3363	822	1370	0	0	0	0	0	0	0	0
	PE2VD12	12" wide	1620	2701	733	1222	2465	4109	1004	1674	1124	1873	508	848	1710	2850	696	1161
	PE2VFD12	12" wide, front only	1620	2701	733	1222	2465	4109	1004	1674	0	0	0	0	0	0	0	0

Note: Cable slack spools reduce cable capacity.

PR2HF PatchRunner 2 Horizontal Cable Managers	PR2HF2	2 RU, front only	140	233	63	105	213	355	86	144	0	0	0	0	0	0	0	0
	PR2HF3	3 RU, front only	257	429	116	194	392	653	159	266	0	0	0	0	0	0	0	0
	PR2HF4	4 RU, front only	375	625	169	283	570	951	232	387	0	0	0	0	0	0	0	0

NM NetManager High Capacity Horizontal Cable Managers	NM1	1 RU, front/rear	36	61	16	27	56	93	22	38	45	76	20	34	69	116	28	47
	NMF1	1 RU, front only	36	61	16	27	56	93	22	38	0	0	0	0	0	0	0	0
	NM2	2 RU, front/rear	109	182	49	82	166	277	67	112	123	206	56	93	188	314	76	127
	NMF2	2 RU, front only	109	182	49	82	166	277	67	112	0	0	0	0	0	0	0	0
	NM3	3 RU, front/rear	193	321	87	145	293	489	119	199	245	409	111	185	373	622	152	253
	NMF3	3 RU, front only	193	321	87	145	293	489	119	199	0	0	0	0	0	0	0	0
	NM4	4 RU, front/rear	271	452	122	204	412	687	168	280	356	593	161	268	541	902	220	367
	NMF4	4 RU, front only	271	452	122	204	412	687	168	280	0	0	0	0	0	0	0	0

Note: Rear section may be partially blocked by rack posts.

CMPH Open-Access Horizontal Cable Managers	CMPH1	1 RU, front/rear	25	42	11	19	39	65	15	26	32	53	14	24	49	82	20	33
	CMPHF1	1 RU, front only	25	42	11	19	39	65	15	26	0	0	0	0	0	0	0	0
	CMPH2	2 RU, front/rear	59	98	26	44	89	149	36	61	120	200	54	90	183	305	74	124
	CMPHF2	2 RU, front only	59	98	26	44	89	149	36	61	0	0	0	0	0	0	0	0
	CMPHH2	2 RU, front only, larger D-rings	120	200	54	90	183	305	74	124	0	0	0	0	0	0	0	0
	CMPHHF1	1 RU, front only, larger D-rings	32	53	14	24	49	82	20	33	0	0	0	0	0	0	0	0

Note: Rear section may be partially blocked by rack posts.

Cable Capacity Charts (millimeters)



Product Family	Part Number	Description	Recommended Cable Fill (30%)								Maximum Cable Fill (50%)							
			Front Side								Rear Side							
			Cat. 6A (28 AWG - 4,70mm)		Cat. 6A (24 AWG - 6,99mm)		Cat. 6 (28 AWG - 3,81mm)		Cat. 6 (24 AWG - 5,97mm)		Cat. 6A (28 AWG - 4,70mm)		Cat. 6A (24 AWG - 6,99mm)		Cat. 6 (28 AWG - 3,81mm)		Cat. 6 (24 AWG - 5,97mm)	
PR2V PatchRunner 2 Vertical Cable Managers	PR2VD06	152mm wide	503	839	227	379	765	1276	312	520	304	507	137	229	462	771	188	314
	PR2VFD06	152mm wide, front only	503	839	227	379	765	1276	312	520	0	0	0	0	0	0	0	0
	PR2VD08	203mm wide	711	1185	321	536	1081	1802	440	734	443	739	200	334	674	1124	274	457
	PR2VFD08	203mm wide, front only	711	1185	321	536	1081	1802	440	734	0	0	0	0	0	0	0	0
	PR2VD10	254mm wide	918	1531	415	692	1397	2328	569	948	582	971	263	439	886	1477	361	601
	PR2VFD10	254mm wide, front only	918	1531	415	692	1397	2328	569	948	0	0	0	0	0	0	0	0
	PR2VD12	305mm wide	1126	1876	509	849	1712	2854	697	1163	721	1203	326	544	1098	1830	447	745
	PR2VFD12	305mm wide, front only	1126	1876	509	849	1712	2854	697	1163	0	0	0	0	0	0	0	0

Note: Cable slack spools reduce cable capacity.

PE2V PatchRunner 2 Enhanced Vertical Cable Managers with Vertical Patching	PE2VD06	152mm wide	737	1229	333	555	1122	1870	457	761	493	823	223	372	751	1252	306	510
	PE2VFD06	152mm wide, front only	737	1229	333	555	1122	1870	457	761	0	0	0	0	0	0	0	0
	PE2VD08	203mm wide	1031	1719	466	777	1570	2616	639	1065	703	1173	318	530	1071	1785	436	727
	PE2VFD08	203mm wide, front only	1031	1719	466	777	1570	2616	639	1065	0	0	0	0	0	0	0	0
	PE2VD10	254mm wide	1325	2209	599	999	2017	3363	821	1369	914	1523	413	688	1391	2319	566	944
	PE2VFD10	254mm wide, front only	1325	2209	599	999	2017	3363	821	1369	0	0	0	0	0	0	0	0
	PE2VD12	305mm wide	1620	2700	732	1220	2465	4109	1004	1673	1123	1872	508	846	1710	2850	696	1160
	PE2VFD12	305mm wide, front only	1620	2700	732	1220	2465	4109	1004	1673	0	0	0	0	0	0	0	0

Note: Cable slack spools reduce cable capacity.

PR2HF PatchRunner 2 Horizontal Cable Managers	PR2HF2	2 RU, front only	140	233	63	105	213	355	86	144	0	0	0	0	0	0	0	0
	PR2HF3	3 RU, front only	257	429	116	194	392	653	159	266	0	0	0	0	0	0	0	0
	PR2HF4	4 RU, front only	375	625	169	283	570	951	232	387	0	0	0	0	0	0	0	0

NM NetManager High Capacity Horizontal Cable Managers	NM1	1 RU, front/rear	36	61	16	27	56	93	22	38	45	76	20	34	69	116	28	47
	NMF1	1 RU, front only	36	61	16	27	56	93	22	38	0	0	0	0	0	0	0	0
	NM2	2 RU, front/rear	109	182	49	82	166	277	67	112	123	206	56	93	188	314	76	127
	NMF2	2 RU, front only	109	182	49	82	166	277	67	112	0	0	0	0	0	0	0	0
	NM3	3 RU, front/rear	193	321	87	145	293	489	119	199	245	409	111	185	373	622	152	253
	NMF3	3 RU, front only	193	321	87	145	293	489	119	199	0	0	0	0	0	0	0	0
	NM4	4 RU, front/rear	271	452	122	204	412	687	168	280	356	593	161	268	541	902	220	367
	NMF4	4 RU, front only	271	452	122	204	412	687	168	280	0	0	0	0	0	0	0	0

Note: Rear section may be partially blocked by rack posts.

CMPH Open-Access Horizontal Cable Managers	CMPH1	1 RU, front/rear	25	42	11	19	39	65	15	26	32	53	14	24	49	82	20	33
	CMPHF1	1 RU, front only	25	42	11	19	39	65	15	26	0	0	0	0	0	0	0	0
	CMPH2	2 RU, front/rear	59	98	26	44	89	149	36	61	120	200	54	90	183	305	74	124
	CMPHF2	2 RU, front only	59	98	26	44	89	149	36	61	0	0	0	0	0	0	0	0
	CMPHH2	2 RU, front only, larger D-rings	120	200	54	90	183	305	74	124	0	0	0	0	0	0	0	0
	CMPHHF1	1 RU, front only, larger D-rings	32	53	14	24	49	82	20	33	0	0	0	0	0	0	0	0

Note: Rear section may be partially blocked by rack posts.

A network graphic background consisting of a complex web of interconnected nodes and lines, rendered in shades of blue and white. The nodes vary in size, and the lines are thin and light-colored, creating a sense of connectivity and data flow. The background is split into a light blue upper section and a darker blue lower section.

PANDUIT®

**Panduit Corp.
World Headquarters
Tinley Park, IL 60487**

cs@panduit.com

US and Canada: 800.777.3300

**Europe, Middle East, and Africa:
44.20.8601.7200**

Latin America: 52.33.3777.6000

Asia Pacific: 65.6305.7575

www.panduit.com

All trademarks, service marks, trade names, product names, and logos appearing in this document are the property of their respective owners.

©2023 Panduit Corp. ALL RIGHTS RESERVED. RKCB46-SA-ENG 6/2023