



NetKey[®] Cabling System

North America

NetKey Cabling System

The NetKey Copper and Fiber Cabling System provides a complete, standards compliant cabling infrastructure solution for voice, data and video applications. NetKey Modules feature the universal “keystone” design and are compatible with a wide assortment of modular patch panels, faceplates, and surface mount boxes. When teamed with complementary Panduit products, the NetKey Solutions cover all your needs from the telecommunication room to the work area with the proven innovation and quality you depend on from Panduit.



Panduit and Prysmian Group offer a comprehensive line of contractor-grade connectivity and cabling solutions. This world-class partnership provides guaranteed network performance and system reliability for customer requirements.

General Cable is a registered trademark of Prysmian Group
©2024 General Cable Technologies Corporation.



NetKey Jack Modules, Copper Cable, and Patch Cords

Pages 4-5



NetKey Modular Patch Panels

Pages 5-6



NetKey Faceplates and NetKey Stainless Steel Faceplates

Page 7



NetKey Audio/Video Modules and Inserts

Page 8



NetKey Surface Mount Boxes and Furniture Faceplates

Page 9



Shielded Keystone Jacks, Patch Panels, Copper Patch Cords, and Copper Cable

Page 10



Termination Tools

Page 11



NetKey Fiber Optic Adapters

Page 11



Physical Security Devices

Page 12



Racks and Cable Management

Pages 13-15

NetKey Category 6A, 6, and 5e Jack Modules

- Meet industry performance standards for Category 6A, 6, and 5e
- Punchdown Jack Modules are 100% performance tested and individually serialized for future traceability
- Keystone punchdown jacks meet ANSI/TIA-568.2-D and ISO 11801 component requirements
- Snap in and out of keystone openings for easy moves, adds, and changes
- Universal label includes T568A and T568B wiring schemes



NK6X88MBU



NK688MBU

Part Number	Performance Level	Termination Style	Color**
NK6X88M**+	Category 6A	Punchdown	BU (Blue), AW (Arctic White), BL (Black), EI (Electric Ivory), GR (Green), IG (International Gray), IW (International White), OR (Orange), RD (Red), VL (Violet), WH (White), YL (Yellow)
NK688M**+	Category 6		
NKP5E88M**+	Category 5e		

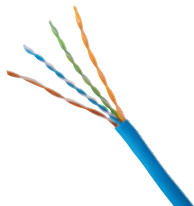
**Replace with color initial. Available color options may vary
+Add -Q to indicate 25 pieces per package to reduce single use plastic

NetKey Category 6A, 6, and 5e Unshielded Copper Cable

- Small diameter allows for improved pathway capacity, tighter bend radius and increased flexibility and ease during installation
- Third party tested by an independent laboratory and complies with the electrical channel requirements of ANSI/TIA-568.2-D and ISO 11801
- Complies with IEEE 802.3af, IEEE 802.3at and IEEE 802.3bt for PoE applications



PUR6AHD04BU-G



PUR6C04BU-U

Part Number	Gauge (AWG)	Flammability Rating	Color**
Category 6A U/UTP 4 Pair Copper Cable			
PUP6XHD04**-G	23	CMP	Blue
PUR6AHD04**-G		CMR	
Category 6 U/UTP 4 Pair Copper Cable			
PUP6C04**-W	24	CMP	Blue
PUP6C04**-WZ			
PUP6C04**-WLPZ	23	CMR	
PUR6C04**-U			
PUR6C04**-F			
Category 5e U/UTP 4 Pair Copper Cable			
PUP5C04**-F	24	CMP	Blue
PUR5C04**-F		CMR	

**Visit www.panduit.com for color options

NetKey Category 6A, 6, and 5e U/UTP Copper Patch Cords

- Meet industry performance standards for Category 6A, 6, and 5e
- 100% performance tested
- Available in a variety of colors and lengths for design flexibility



NK6APC3BU



NK5EPC3BUY

Part Number	Performance Level	Lengths [^] (ft.)	Color ^{**}
NK6APC ^{^**}	Category 6A	1-19 (every 1 ft.) 20-50 (every 5 ft.)	BU (Blue), BL (Black), GR (Green), leave blank for International White, RD (Red), YL (Yellow), and GY (Gray)
NK6PC ^{^**Y}	Category 6		
NK5EPC ^{^**Y}	Category 5e	1, 3, 5, 7, 10	

[^]Replace with length numeral

^{**}Replace with color initial

Available length and color options may vary

NetKey Patch Panels and Accessories

- Modular patch panels accept NetKey modules, which snap in and out for easy moves, adds, and changes
- Angled style facilitates proper bend radius control and minimizes the need for horizontal cable managers
- Select modular patch panels have a front access design that includes faceplates with easy snap release feature

Modular Patch Panels

Part Number	Ports	Style	Identification	Design	RU
Front Access					
NKFP24Y	24	Flat	Adhesive	Front Access	1
NKFP48Y	48				2
NKFPL24	24		Label		1
NKFPL48	48	Angled	Adhesive		2
NKFPA24	24				1
NKFPA48	48		2		
NKFPAL24	24	-	Label	1	
NKFP12W	12		Adhesive	-	
NKPP24FMY	24	Flat	Adhesive	Flush Mount	1
NKPP48FMY	48				2
NKPPA24FMY	24	Angled			1
NKPPA48FMY	48				2
NKPP48HDY	48	Flat			1
NKPPA48HDY	48	Angled			1



NKFP24Y



NKFPL24



NKPP48FMY



NKPPA48FMY



NK6XPPG24Y



NK6XPPG48Y

Punchdown Patch Panels

Part Number	Ports	Style	Identification	Performance	RU
NK6XPPG24Y	24	Flat	Adhesive	6A	1
NK6XPPG48Y	48				2
NK6PPG24Y	24			6	1
NK6PPG48Y	48				2
NK5EPPG24Y	24			5e	1
NK5EPPG48Y	48				2



SRB19BLY



SRB19D5BL



SRBBRKT



CNSRBKIT-C



DPFP1

Patch Panel Accessories

Part Number	Description
SRB19BLY	Strain Relief Bar, extended 2" deep
SRB19D5BL	Strain Relief Bar, extended 5" deep with inward tabs
SRBBRKT	Mounting Bracket for strain relief bars
CNSRBKIT-C	Cage Nut Kit for strain relief bars
DPFP1	Filler Panel, 1 RU
DPFP2	Filler Panel, 2 RU
CPAF1BLY	Angled Filler Panel, 1 RU
CPAF2BLY	Angled Filler Panel 2 RU
CPATCBL	Transition cover

NetKey Faceplates

- Accept all NetKey Modules
- Replacement label/label covers available for select products
- Non-label faceplates include screws with matching color head screws



Part Number	Ports	Style	Identification
NK1F**Y	1	Flat	Label Pocket
NK2F**Y	2		
NK4F**Y	4		
NK6F**Y	6		
NK8F**	8	Vertical, Sloped	
NK4VSF**	4		
NK4HSF**Y	4	Horizontal, Sloped	
NK1FN**	1	Flat	Adhesive
NK2FN**	2		
NK3FN**	3		
NK4FN**	4		

**Replace with BL (Black), EI (Electric Ivory), IG (International Gray), IW (International White), WH (White). Available options may vary

NetKey Stainless Steel Faceplates

- Impact-resistant 304 stainless steel for light industrial environments



Part Number	Ports	Style	Identification
NKF2S	2	Flat	Label Pocket
NKF4S	4		
NKF6S	6		

Phone Faceplates



Part Number	Ports	Style	Performance Level
KWPY	1	Empty	—
KWPK6		Punchdown	Category 6
KWPK5E			Category 5e

Compatible with wall mountable phones with short patch cord connections to the jack module

NetKey Adapters



NK4RMFIW



NK4106MFIW

Part Number	Ports	Style
NK4RMFIW	4	GFCI
NK2RMFIW	2	
NK4106MFIW	4	106
NK2106MFIW	2	

NetKey Audio/Visual Modules and Inserts



NK35MSSIW



NK35MSCIW



NKHDMIW



NKUSBAAIW



NKBMIW-X

Part Number	Description
Modules	
NKF*	Keystone F-type 3 Ghz coupler module
NK35MSS*	Keystone 3.5mm (1/8") stereo solder type headset connector
NK35MSC*	Keystone 3.5mm (1/8") stereo headset connector
NKHDMI*	Keystone HDMI 2.0 Type A female to female coupler module
NKUSBAA*	Keystone USB 2.0 female A to female A coupler
NKBM*-X	Blanks out 1 port

*Replace with AW (Arctic White), BL (Black), EI (Electric Ivory), IG (International Gray), IW (International White), WH (White). Available options may vary
 -X indicates 10 pieces per package to reduce single-use plastic

NetKey Surface Mount Boxes

- Mount easily with supplied mounting screws, adhesive tape, or optional magnet
- Cable entry from side knockouts



NK2BXIW-A NK4BXIW-AY



NK6BXIW-AY

Part Number	Ports	Style	Identification
NK2BX** -A	2	Elongated	Adhesive
NK4BX** -AY	4		Label Pocket
NK6BX** -AY	6	Elongated with Fiber Spool	Adhesive

**Replace with, BL (Black), EI (Electric Ivory), IG (International Gray), IW (International White), WH (White) Available options may vary

NetKey Furniture Faceplates

- Compatible with standard furniture opening



NK4MFABL

Part Number	Style	Color	Identification
NK4MF**	Flat	Black	Adhesive
NK4MFLBL			Label Pocket

**Replace with BL (Black), EI (Electric Ivory), IG (International Gray), IW (International White) Available options may vary

Keystone Shielded Jacks



KJS6X88TC



KJS6X88TCBL



KJS6X88TCBU

Part Number	Performance Level	Termination Style	Color
KJS6X88TC	Category 6A	Punchdown	Metal
KJS6X88TCBU			Blue
KJS6X88TCBL			Black

For use with Keystone Shielded Patch Panels
 May not be compatible with some NetKey Outlets and Patch Panels

Keystone Shielded Patch Panels



KPS24BL



KPA24WSBL



KP24WSBL



KPA48WSBL

Part Number	Ports	No. of Rack Units	Identification
KPS24BL	24	1	Label Pocket
KP24WSBL			
KPA24WSBL			
KPA48WSBL	48	2	-

Note: For use with Keystone shielded jacks only

TX6A™ 10 Gig Shielded Copper Patch Cords



STP6X3MIG

Part Number	Conductor Gauge (AWG)	Cable Diameter in. (mm)	Jacket Type
STP6X^M**	26	0.24 (6.1)	CM/LSZH

**Visit www.panduit.com for color options

^Visit www.panduit.com for length options

NetKey Category 6A and Category 6 Shielded Copper Cable

- Small diameter allows for improved pathway capacity, tighter bend radius and increased flexibility and ease during installation
- Third party tested by an independent laboratory and complies with the electrical channel requirements of ANSI/TIA-568.2-D and ISO 11801
- Complies with IEEE 802.3af, IEEE 802.3at and IEEE 802.3bt for PoE applications



Part Number	Gauge (AWG)	Flammability Rating	Color*
Category 6A F/UTP 4 Pair Copper Cable			
PFP6X04**-UG	23	CMP	Blue
PFR6X04**-CG		CMR	
Category 6 F/UTP 4 Pair Copper Cable			
PFP6C04**-UG	23	CMP	Blue
PFR6C04**-UG		CMR	

**Visit www.panduit.com for color options

Termination Tools



Part Number	Description
Pan-Punch™ Termination Tool	
PDT110	Single pair punchdown tool and blade
PDTH110	Replacement blade for single pair punchdown tool (PDT110)
NKSPB	Base used to assist in terminating punchdown modules

NetKey Fiber Optic Adapters

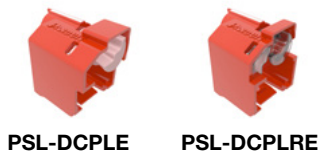


Part Number	Adapter Type	Alignment Sleeve
NKDLCMZ**	Duplex LC	Zirconia Ceramic

**Visit www.panduit.com for color options

Lock-In Devices

- Prevents unauthorized removal of patch cord, VoIP phone, other networking equipment of critical connection.
- Compact testing does not interfere with adjacent jack modules, including high density applications
- Requires key to lock and unlock
- Locking mechanism is white for standard and clear for recessed devices.

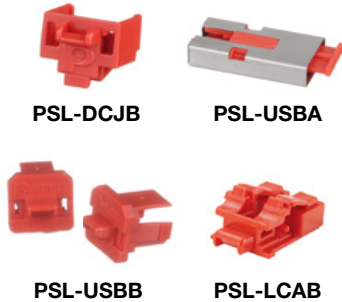


Part Number	Type	Color*	Qty Devices	Qty Keys
PSL-DCPLE*	Standard	Red, Black, Blue, Green, Yellow, Orange, International White, International Gray	10	1
PSL-DCPLE*-C			100	5
PSL-DCPLRE*	Recessed		10	1
PSL-DCPLRE*-C			100	5

*For colors other than Red, replace with -BL (Black), -BU (Blue), -GR (Green), -YL (Yellow), -OR (Orange), IW (International White), or -IG (International Gray)

Block-Out Devices

- Blocks unauthorized access and protects jack modules from foreign objects
- Compatible with most RJ45 jack modules and does not interfere with jack contacts
- Does not interfere with adjacent jack modules or hardware
- Requires key to remove



Part Number	Type	Color*	Qty Devices	Qty Keys
PSL-DCJB*	RJ45	Red	10	1
PSL-USBA^	USB Type A		5, 50	
PSL-USBB	USB Type B		10	
PSL-LCAB	LC			

*For colors other than Red, replace with -BL (Black), -BU (Blue), -GR (Green), -YL (Yellow), -OR (Orange), IW (International White), or -IG (International Gray)

^ Replace with -V for bulk packages of 5 or -L for bulk packages of 50 to reduce single use plastic

SmartKeeper Block-Out Devices

- Unique blocking mechanism to prevent unauthorized access to open ports, saving time and money associated with network downtime
- Includes devices for a variety of ports, USB Type C, USB Type A and RJ45
- One Master Key controls multiple devices (sold separately)
- USB type A device mounts flush with the port



Part Number	Type	Color
SKMKEY	Master Key	Gray
SKRJ45RD-X	RJ45	Red
SKUSBA-V	USB Type A	
SKUSBC	USB Type C	

4-Post Cable Management Rack System

- Independently adjustable front and rear mounting rails can be adjusted while the rack is secured to the floor
- Printed rack space identification on all equipment rails allows for quick location of rack spaces (shipped numbers up per TIA-606 specifications; can be set to number down by flipping the rails)
- Multiple mounting holes in top flanges for securing overhead pathways
- Weld nut construction eliminates the need for a second wrench increasing speed and ease of assembly
- Vertical cable managers mount directly to the 4-Post Rack at any of the four corners
- Paint piercing washers included to electrically bond rack for simplified grounding



R4P

Part Number	Height in. (mm)	Width in. (mm)	Depth in. (mm)	RU	Equipment Rails	Load Capacity lbs.	Color
R4P ^{^*}	84 (2134)	23.3 (591)	30.0 (762) and 36.0 (584)	45	#12-24 Threaded	2500	Black
R4P ^{^*CN}			23.0 (584), 30.0 (762), 36.0 (914), and 42.0 (1054)		Cage Nut		

*Heights: 96 (8 ft.)

[^]Depths other than 30 in.: 23, 36, 42

Adjustable Depth 4-Post Rack System

- Supports equipment mounting depths from 23 inches to 42 inches in 0.5-inch increments
- Constructed from heavy-duty steel which provides a sturdy and durable platform for equipment
- Compatible with accessories including power distribution, unit brackets, vertical tie-off panels, and shelving
- Includes grounding and bonding features that prevent damage from electrical surges and ensure equipment operates reliably



AR4P

Part Number	Height in. (mm)	Width in. (mm)	Depth in. (mm)	RU	Equipment Rails	Color
AR4P [*]	84.1 and 96.1 (2136.9 and 2441.7)	20.31 (515.9)	23.0 to 42.0 (584.2 to 1066.8)	45 and 52	#12-24 Threaded	Black and White
AR4P ^{*CN}					Cage Nut	

*Heights: 96 (8 ft.)

2-Post Cable Management Rack System

- Printed rack space identification on all equipment rails allows for quick location of rack spaces; numbers up per TIA-606 specifications
- Double-sided #12-24 EIA universal mounting hole spacing
- Can be used with all cable management and patch panel products in addition to any industry standard 19-inch components
- 24 #12-24 mounting screws included
- Multiple mounting hole locations in each base angle
- Paint piercing washers included to electrically bond rack for simplified grounding; for the complete grounding solution, StructuredGround™ Kits for racks, see www.panduit.com



R2P

Part Number	Height in. (mm)	Width in. (mm)	Depth in. (mm)	RU	Equipment Rails	Load Capacity lbs.	Color
R2P*	84.0 (2134)	20.3 (516)	3.0 (76)	45	#12-24 Threaded	1000	Black
R2P6S*			6.0 (152)			1500	

*Heights: 96 (8 ft.)

Rack Mount Shelves

- Mounting hardware included
- Vented shelves provide better heat distribution for active equipment



RSHLF

Part Number	Description	Height in. (mm)	Width in. (mm)	Depth in. (mm)	RU	Material	Load Capacity lbs.	Color
SRM19FM1	2-Post Rack mount shelf	1.7 (44.0)	19.0 (483.0)	15.2 (385.0)	1	Steel	30	Black
RSHLF	4-Post Rack mount shelf			30.0 (762.0)			275	

PatchLink™ Horizontal Cable Managers

- Lightweight plastic construction provides durability and easy installation
- Dual hinged cover allows cable access without removing cover
- Rounded edges on fingers protect cables from snags and damage to cable
- Flexible fingers allow easy installation and removal of cables
- Pass-through holes allow front to rear cabling
- Covers and #12-24 mounting screws included



WMP1E

Part Number	Height in. (mm)	Width in. (mm)	Depth in. (mm)	RU	Single/Dual Sided	Color
WMP1E	3.5 (89)	19.0 (483.0)	8.9 (226)	2	Dual	Black
WMPF1E			3.7 (94)		Single	
WMPH2E			8.9 (226)		Dual	
WMPFSE	1.7 (44)		2.7 (69)	1	Single	
WMPSE			8.9 (226)		Dual	
WMPHF2E	3.5 (89)		3.7 (94)	2	Single	
WMPLFSE	1.7 (44)		2.7 (69)	1	Single	
WMPLSE			7.9 (200)		Dual	

NetRunner™ Vertical Cable Management System

- Integral cable retainers on the end of each finger provide easy access to route cables between fingers
- Bend radius fingers align with rack spaces to support cables as they transition to the vertical pathway
- Dual hinged covers can be opened 110° to the left or right to provide complete access to the cables inside the vertical pathway
- Vertical managers include hinged covers, mounting brackets, and #12-24 screws



WMPV45E

Part Number	Height in. (mm)	Width in. (mm)	Depth in. (mm)	RU	Single/Dual Sided	Color
WMPV45E	83.0 (2108)	4.9 (125)	12.0 (306)	45	Dual	Black
WMPVF45E			6.5 (165)		Single	
WMPVHC45E		6.7 (17)	14.1 (357)		Dual	
WMPV22E	41.5 (1054)	4.9 (125)	12.0 (306)	22	Dual	
WMPVHCF45E	83.0 (2108)	6.7 (17)	7.6 (192)	45	Dual	



PANDUIT®

Panduit Corp.
World Headquarters
Tinley Park, IL 60487

800.777.3300

www.panduit.com