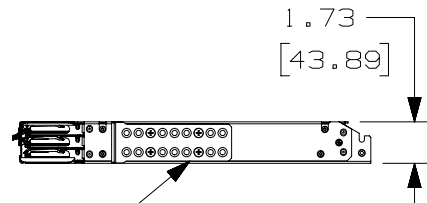
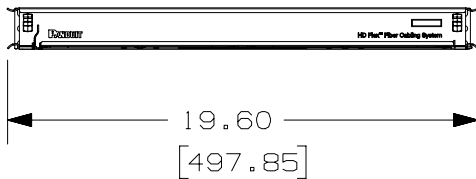
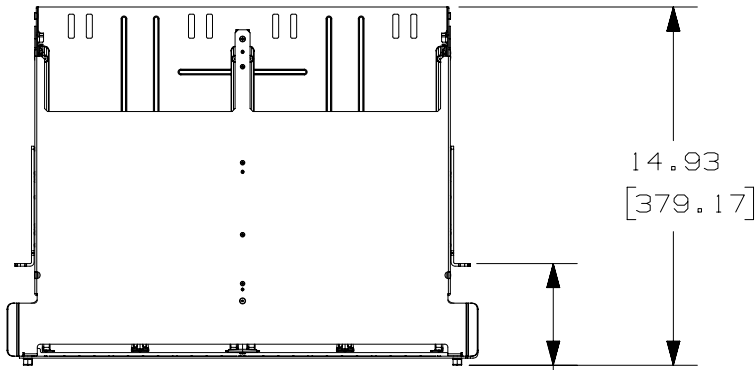


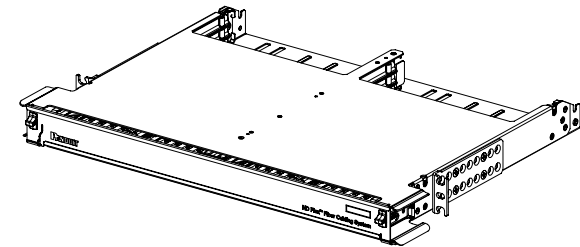
THIS COPY IS PROVIDED ON A RESTRICTED BASIS AND IS NOT TO BE USED IN ANY WAY DETRIMENTAL TO THE INTERESTS OF PANDUIT CORP.

NOTES:

1. SEE CATALOG FOR COMPLETE LIST OF PARTS APPLICABLE FOR USE WITH THIS PART.
2. DIMENSIONS IN BRACKETS ARE METRIC.
3. MATERIAL: GALVANNEALED STEEL
COLOR: BLACK
4. MOUNTING BRACKETS ADJUSTABLE IN 1/2" INCREMENTS.
5. ALL MATERIALS AND COMPONENTS USED MEET THE MATERIAL RESTRICTIONS OF RoHS (EUROPEAN DIRECTIVE 2011/65/EC ON THE RESTRICTION OF HAZARDOUS SUBSTANCES) AS PROPOSED BY THE RoHS TECHNICAL ADAPTATION COMMITTEE.



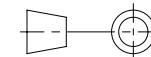
← 2X MOUNTING BRACKET (SEE NOTE 4)



PANDUIT PART NO.	WEIGHT
FLEX1U04	11.95 lbs (5.42 kg)
FLEX1U06 FLEX1U06WH	11.60 lbs (5.26 kg)
FLEX1U12	11.15 lbs (5.06 kg)

REV	DATE	BY	CHK	APR	DESCRIPTION	ECN
06A	1/20/22	JSP	WJM	ANJA	A. ADDED FLEX1U06WH.	12F187UP-DC
00	08-02-16	SAT	JDK	TMK	RELEASED TO PRODUCTION	12F187UP-DC

TITLE					
HD FLEX 1RU ENCLOSURE (FLEX1U**)					
CUSTOMER DRAWING					
ITEM REVISION NAME				PANDUIT	
12F187UP/06					
DATASET FILE NAME				PART NO.	
12F187UP_DC/06A				FLEX1U**	
UNLESS OTHERWISE SPECIFIED, DIMENSIONAL TOLERANCES ARE: IN (mm)				DRAWING NUMBER:	
DIMENSIONS ARE FOR REFERENCE ONLY				12F187UP-DC	
DRAWN BY		DATE	CHK	SCALE	SIZE
SAT		06-27-16	JDK	1 : 8	A



THIRD ANGLE
PROJECTION

SHT 1 OF 1