

PANDUIT

EPSON
EXCEED YOUR VISION

PORTABLE LABEL PRINTER PARTNER




**Combining best in class print technology
with industry leading labeling and
software capabilities**

NEW! MP100 and MP300
Mobile Printers

Product Features



MP100	MP300	Easy-Mark Plus™	Easy-Mark™ iLabel™ App*
Automatic cutter	360 dpi print resolution	Common templates to easily create and print all electrical and network applications.	Easily create and print text, barcode, and QR code labels with variety of font sizes
USB and Bluetooth Connectivity	Automatic cutter with full or half cut	11 languages included	Voice to text functionality
Integration with Fluke LinkWare™ Live	Fast 1.4"/sec print speed	Available for USB flash drive, CD, web download or network server-based version	Date and time stamp label creation
Up to 1.0" wide label media	Up to 1.5" wide label media	Works with Panduit portable and desktop thermal transfer printers, Panduit embossing systems and other laser jet and ink jet printers	
Prints continuous labels	Prints die-cut and continuous labels	A free 90 day trial version is available from www.panduit.com	
Prints from mobile labeling apps	USB connectivity		
Compact Size	Prints from Easy-Mark Plus™ Software		
	Magnetic attachment accessory		
	Rechargeable battery pack		Easy-Mark™ Network™ App* Easily create labels for network components and cabling that are ANSI/TIA-606 compliant Connect to Fluke LinkWare™ Live Voice to text functionality

Product Selection

Printers and Accessories



MP300

Part Number	Description
MP300	Includes MP300 printer, one (1) cassette of S100X150VAM self-laminating labels, rechargeable Li-ion Battery Pack, hard carrying case, AC power adapter, USB cable, magnetic attachments and quick reference card.
MP300/E	Includes MP300 Printer, 1 Cassette of S100X150VAM, Hard Carrying Case, Li-Ion Rechargeable Battery Pack, Magnetic Attachments, USB Cable, and Power Adapter (MP300-AC). For use outside of North America.
MP300-ACS	Replacement 120-240 VAC universal power adapter module with power cord for North America for MP300 printer
MP300-BATT	Replacement Li-ion rechargeable battery pack for MP300 and MP300/E printers
MP300-CASE	Replacement hard carrying case for MP300 and MP300/E printers



MP100

Part Number	Description
MP100	Includes MP100 printer, protective impact bumper, 1 cassette of T100X000VPM-BK continuous vinyl tape, AC power adapter, USB cable, and quick reference card.
MP100/E	Includes MP100 Printer with Protective Impact Bumper, 1 Cassette of T100X000VPM-BK, USB Cable, and Power Adapter (MP100-AC). For use outside of North America.
MP100-ACS	Replacement 120-240 VAC universal power adapter module with power cord for North America for MP100 printer
MP100-IB	Replacement impact bumper for MP100 and MP100/E printers



EMPLUS

Part Number	Description
EMPLUS-CD	Easy-Mark Plus™ Labeling Software, CD-ROM.
EMPLUS-DL	Easy-Mark Plus™ Labeling Software, online download.
EMPLUS-2GO	Easy-Mark Plus™ Portable Application, USB flash drive.
EMPLUS-SERVER	Easy-Mark Plus™ Labeling Software, networkable server based version.

Windows is a registered trademark of Microsoft Corp. in the United States and/or other countries.

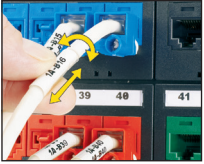
Turn-Tell® Label Cassettes Patented

- Fast-loading Label Cassette includes both label material and ribbon to make changing labels easy
- Innovative label design allows labels to rotate for visibility from any angle, and for repositioning on the wire/cable to align legends and improve aesthetics

- Labels can be easily installed on existing terminated wires and assemblies without disconnecting the wires/cables

 Polymer Film (V1)

 -40° F to 200° F (-40° C to 93° C)




Part Number	Part Description	Quantity of Labels Per Cassette	Printer Compatibility		Print-On Area Color	Width		Length		Std. Pkg. Qty.	Std. Ctn. Qty.
			MP100	MP300		In.	mm	In.	mm		
R100X075V1M	MP Cassette, Turn-Tell Self-Laminating Label, Vinyl, 1.00" W x 0.75" H, .25" Print On Area, Clear/White	175	N	Y	Black on White	1.00	25.4	0.75	19.1	1	5
R100X125V1M	MP Cassette, Turn-Tell Self-Laminating Label, Vinyl, 1.00" W x 1.25" H, .38" Print On Area, Clear/White	125	N	Y	Black on White	1.00	25.4	1.25	31.8	1	5
R100X150V1M	MP Cassette, Turn-Tell Self-Laminating Label, Vinyl, 1.00" W x 1.50" H, 0.50" Print On Area, Clear/White	100	N	Y	Black on White	1.00	25.4	1.50	38.1	1	5
R100X225V1M	MP Cassette, Turn-Tell Self-Laminating Label, Vinyl, 1.00" W x 2.25" H, .75" Print On Area, Clear/White	75	N	Y	Black on White	1.00	25.4	2.25	57.2	1	5

Die-Cut Self Laminating Label Cassettes

- Fast-loading Label Cassette includes both label material and ribbon to make changing labels easy

- Self-laminating adhesive labels for wire/cable identification include a white print-on area and clear overlamine



 Self-Laminating Vinyl (VA)

 -40° F to 150° F (-40° C to 66° C)

Part Number	Part Description	Quantity of Labels Per Cassette	Printer Compatibility		Print-On Area Color	Width		Length		Print-On Area Height		Min. Cable O.D.		Max. Cable O.D.		Wire/Cable Size Range	Std. Pkg. Qty.	Std. Ctn. Qty.
			MP100	MP300		In.	mm	In.	mm	In.	mm	In.	mm	In.	mm			
S050X075VAM	MP Cassette, Self-Laminating Label, Vinyl, .50" W x .75" H, .25" Print On Area, Clear/White.	425	N	Y	Black on White	0.50	12.7	0.75	19.1	0.25	6.4	0.08	2.0	0.16	4.0	18 - 14 AWG	1	5
S050X125VAM	MP Cassette, Self-Laminating Label, Vinyl, .50" W x 1.25" H, .38" Print On Area, Clear/White.	200	N	Y	Black on White	0.50	12.7	1.25	31.8	0.38	9.7	0.12	3.1	0.28	7.0	12 - 10 AWG	1	5
S050X150VAM	MP Cassette, Self-Laminating Label, Vinyl, .50" W x 1.50" H, .50" Print On Area, Clear/White.	175	N	Y	Black on White	0.50	12.7	1.50	38.1	0.50	12.7	0.16	4.0	0.32	8.1	Cat. 5e/ Cat. 6	1	5
S100X075VAM	MP Cassette, Self-Laminating Label, Vinyl, 1.00" W x .75" H, .25" Print On Area, Clear/White.	300	N	Y	Black on White	1.00	25.4	0.75	19.1	0.25	6.4	0.08	2.0	0.16	4.0	18 - 14 AWG	1	5
S100X125VAM	MP Cassette, Self-Laminating Label, Vinyl, 1.00" W x 1.25" H, .38" Print On Area, Clear/White.	200	N	Y	Black on White	1.00	25.4	1.25	31.8	0.38	9.7	0.12	3.1	0.28	7.0	12 - 10 AWG	1	5
S100X150VAM	MP Cassette, Self-Laminating Label, Vinyl, 1.00" W x 1.50" H, .50" Print On Area, Clear/White.	175	N	Y	Black on White	1.00	25.4	1.50	38.1	0.50	12.7	0.16	4.0	0.32	8.1	Cat. 5e/ Cat. 6	1	5
S100X225VAM	MP Cassette, Self-Laminating Label, Vinyl, 1.00" W x 2.25" H, .75" Print On Area, Clear/White.	125	N	Y	Black on White	1.00	25.4	2.25	57.2	0.75	19.1	0.24	6.1	0.48	12.2	8 - 4 AWG	1	5
S100X400VAM	MP Cassette, Self-Laminating Label, Vinyl, 1.00" W x 4.00" H, 1.00" Print On Area, Clear/White.	70	N	Y	Black on White	1.00	25.4	4.00	101.6	1.00	25.4	0.32	8.1	0.95	24.3	2 - 1 AWG	1	5
S100X650VAM	MP Cassette, Self-Laminating Label, Vinyl, 1.00" W x 6.50" H, 1.50" Print On Area, Clear/White.	45	N	Y	Black on White	1.00	25.4	6.50	165.1	1.50	38.1	0.48	12.2	1.59	40.4	1/0-250 MCM	1	5

Continuous Self-Laminating Labels

- Fast-loading Label Cassette includes both label material and ribbon to make changing labels easy

- Self-laminating adhesive labels for wire/cable identification include a white print-on area and clear overlamine



Self-Laminating Vinyl (VA)



-40° C to 66° C (-40° F to 150° F)

Part Number	Part Description	Printer Compatibility		Print-On Area Color	Width		Length		Print-On Area Width		Min. Cable O.D.		Max. Cable O.D.		Wire/Cable Size Range	Std. Pkg. Qty.	Std. Ctn. Qty.
		MP100	MP300		In.	mm	FT.	m	In.	mm	In.	mm	In.	mm			
S000X100VAM	MP Cassette, Continuous Self-Lam Tape, Vinyl, 1.0" W x 26' L, White	Y	Y	White	0.945	24	26.2	8.0	0.315	8	0.10	2.5	0.20	5.1	12 – 10 AWG	1	5

Continuous Heat Shrink Labels

- Fast-loading Label Cassette includes both label material and ribbon to make changing labels easy

- Shrink ratio 3:1
- Non-adhesive flattened heat shrinkable polyolefin for wire/cable identification



Heat Shrinkable Polyolefin (H1, H2)



-40° C to 125° C (-40° F to 257° F)

Part Number	Part Description	Printer Compatibility		Ribbon & Material Color	Width		Length		Min. Cable O.D.		Max. Cable O.D.		Wire/Cable Size Range	Std. Pkg. Qty.	Std. Ctn. Qty.
		MP100	MP300		In.	mm	FT.	m	In.	mm	In.	mm			
H000X025H1M	MP Cassette, Continuous Heat Shrink Tubing, Mil Grade Polyolefin, .25" W x 8' L, White	Y	Y	Black on White	0.27	6.8	8.2	2.5	0.06	1.4	0.16	4.1	22 – 18 AWG	1	5
H000X025H2M	MP Cassette, Continuous Heat Shrink Tubing, Mil Grade Polyolefin, .25" W x 8' L, Yellow	Y	Y	Black on Yellow	0.27	6.8	8.2	2.5	0.06	1.4	0.16	4.1	22 – 18 AWG	1	5
H000X034H1M	MP Cassette, Continuous Heat Shrink Tubing, Mil Grade Polyolefin, .34" W x 8' L, White	Y	Y	Black on White	0.37	9.3	8.2	2.5	0.07	1.9	0.22	5.7	18 – 12 AWG	1	5
H000X034H2M	MP Cassette, Continuous Heat Shrink Tubing, Mil Grade Polyolefin, .34" W x 8' L, Yellow	Y	Y	Black on Yellow	0.37	9.3	8.2	2.5	0.07	1.9	0.22	5.7	18 – 12 AWG	1	5
H000X044H1M	MP Cassette, Continuous Heat Shrink Tubing, Mil Grade Polyolefin, .44" W x 8' L, White	Y	Y	Black on White	0.48	12.3	8.2	2.5	0.09	2.4	0.30	7.6	16 – 10 AWG	1	5
H000X044H2M	MP Cassette, Continuous Heat Shrink Tubing, Mil Grade Polyolefin, .44" W x 8' L, Yellow	Y	Y	Black on Yellow	0.48	12.3	8.2	2.5	0.09	2.4	0.30	7.6	16 – 10 AWG	1	5

Continuous Tape Cassettes

- Fast-loading Label Cassette includes both label material and ribbon to make changing labels easy
- Print custom pipe markers, voltage markers, signs, bin markers, and network identification labels on demand
- For flat label applications only



Part Number	Part Description	Printer Compatibility		Ribbon & Material Color	Width		Length		Std. Pkg. Qty.	Std. Ctn. Qty.
		MP100	MP300		In.	mm	FT.	m		
T038X000VPM-BK	MP Cassette, Continuous Tape, Vinyl, .38" W x 23' L, Black on White.	Y	Y	Black on White	0.354	9.0	23	7.0	1	5
T038X000VXM-BK	MP Cassette, Continuous Tape, Vinyl, .38" W x 23' L, Black on Yellow.	Y	Y	Black on Yellow	0.354	9.0	23	7.0	1	5
T038X000YKM-BK	MP Cassette, Continuous Tape, Polyester, .38" W x 30' L, Black on Clear.	Y	Y	Black on Clear	0.354	9.0	30	9.1	1	5
T050X000VPM-BK	MP Cassette, Continuous Tape, Vinyl, .50" W x 23' L, Black on White.	Y	Y	Black on White	0.472	12.0	23	7.0	1	5
T050X000VXM-BK	MP Cassette, Continuous Tape, Vinyl, .50" W x 23' L, Black on Yellow.	Y	Y	Black on Yellow	0.472	12.0	23	7.0	1	5
T050X000YKM-BK	MP Cassette, Continuous Tape, Polyester, .50" W x 30' L, Black on Clear.	Y	Y	Black on Clear	0.472	12.0	30	9.1	1	5
T075X000VPM-BK	MP Cassette, Continuous Tape, Vinyl, .75" W x 23' L, Black on White.	Y	Y	Black on White	0.710	18.0	23	7.0	1	5
T075X000VXM-BK	MP Cassette, Continuous Tape, Vinyl, .75" W x 23' L, Black on Yellow.	Y	Y	Black on Yellow	0.710	18.0	23	7.0	1	5
T075X000YKM-BK	MP Cassette, Continuous Tape, Polyester, .75" W x 30' L, Black on Clear.	Y	Y	Black on Clear	0.710	18.0	30	9.1	1	5
T100X000MPM-BK	MP Cassette, Continuous Tape, Magnetic, 1.00" W x 4.9' L, Black on White.	Y	Y	Black on White	0.945	24.0	4.9	1.5	1	5
T100X000MXM-BK	MP Cassette, Continuous Tape, Magnetic, 1.00" W x 4.9' L, Black on Yellow.	Y	Y	Black on Yellow	0.945	24.0	4.9	1.5	1	5
T100X000VPM-BK	MP Cassette, Continuous Tape, Vinyl, 1.00" W x 23' L, Black on White.	Y	Y	Black on White	0.945	24.0	23	7.0	1	5
T100X000VXM-BK	MP Cassette, Continuous Tape, Vinyl, 1.00" W x 23' L, Black on Yellow.	Y	Y	Black on Yellow	0.945	24.0	23	7.0	1	5
T100X000YKM-BK	MP Cassette, Continuous Tape, Polyester, 1.00" W x 30' L, Black on Clear.	Y	Y	Black on Clear	0.945	24.0	30	9.1	1	5
T150X000MPM-BK	MP Cassette, Continuous Tape, Magnetic, 1.50" W x 4.9' L, Black on White.	N	Y	Black on White	1.471	36.0	4.9	1.5	1	5
T150X000MXM-BK	MP Cassette, Continuous Tape, Magnetic, 1.50" W x 4.9' L, Black on Yellow.	N	Y	Black on Yellow	1.471	36.0	4.9	1.5	1	5
T150X000VPM-BK	MP Cassette, Continuous Tape, Vinyl, 1.50" W x 23' L, Black on White.	N	Y	Black on White	1.471	36.0	23	7.0	1	5
T150X000VXM-BK	MP Cassette, Continuous Tape, Vinyl, 1.50" W x 23' L, Black on Yellow.	N	Y	Black on Yellow	1.471	36.0	23	7.0	1	5
T150X000YKM-BK	MP Cassette, Continuous Tape, Polyester, 1.50" W x 30' L, Black on Clear.	N	Y	Black on Clear	1.471	36.0	30	9.1	1	5

Epson Print Technology

Epson is a global technology leader dedicated to becoming indispensable to society by connecting people, things and information with its efficient, compact and precision technologies.

Combined with Panduit's Labeling and Software Capabilities

Panduit creates leading-edge labeling solutions for electrical and network environments, from the data center to the telecom room, from the jobsite to the plant floor, Panduit has you covered.

Results in Best-in-Class Performance

Panduit has entered into a strategic partnership with Seiko Epson Corporation to jointly develop printer and labels for the industrial, construction and network infrastructure markets. The results of the partnership are printers with best-in-class print quality, speed, capabilities and label selection. The MP100 & MP300 printers and labels are the first of many products that will be jointly developed through this partnership.



Features	MP100			
Label Width up to 1"	✓		✓	✓
Label Offering	★ ★ ★ ★ ★	★ ★ ★ ★ ★	★ ★ ★	★ ★ ★
Cutter	Automatic	Manual	Automatic	Manual
Bluetooth or WiFi compatible	✓		✓	✓



Features	MP300			
Label Width	1.5"	1.0"	1.0"	1.0"
Label Offering	★ ★ ★ ★ ★	★ ★ ★ ★ ★	★ ★ ★	★ ★
Print Resolution	360 dpi	300 dpi	180 dpi	300 dpi
Print Speed	1.4 ips	1.3 ips	1.2 ips	NA
Cutter	Automatic; Full and Half cutting	Manual	Automatic; Full cutting	Manual

Competitive comparison based on published specifications.

WORLDWIDE SUBSIDIARIES AND SALES OFFICES

PANDUIT CANADA
Markham, Ontario
cs-cdn@panduit.com
Phone: 800.777.3300

PANDUIT EUROPE LTD.
London, UK
cs-emea@panduit.com
Phone: 44.20.8601.7200

PANDUIT SINGAPORE PTE. LTD.
Republic of Singapore
cs-ap@panduit.com
Phone: 65.6305.7575

PANDUIT JAPAN
Tokyo, Japan
cs-japan@panduit.com
Phone: 81.3.6863.6000

PANDUIT LATIN AMERICA
Guadalajara, Mexico
cs-la@panduit.com
Phone: 52.33.3777.6000

PANDUIT AUSTRALIA PTY. LTD.
Victoria, Australia
cs-aus@panduit.com
Phone: 61.3.9794.9020

For a copy of Panduit product warranties, log on to www.panduit.com/warranty

For more information

Visit us at www.panduit.com

Contact Customer Service by email: cs@panduit.com
or by phone: 800.777.3300

PANDUIT®

©2020 Panduit Corp.
ALL RIGHTS RESERVED.
IDSG01--SA-ENG
10/2020