

# STRONGHOLD™

## StrongHold Supports and Fasteners offer a complete line of fixing and fastening solutions for commercial and industrial construction facilities.

Within our line, we offer a variety of communication/low voltage supports, beam/purlin clamps, cable/conduit clips, acoustical supports, drywall mounts, and stud wall accessories.

Check out our infographic below to learn more about each category.

### SUPPORT & FASTENERS

#### COMMUNICATION / LOW VOLTAGE

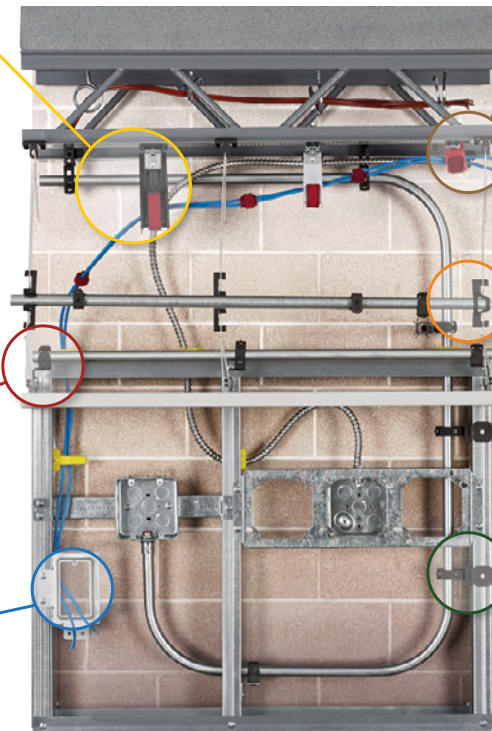
- J-Pro™ and J-Mod® J-hook cable supports for use in plenum or air-handling spaces; complete horizontal and vertical 1" bend radius control
- Bridle rings, suitable for low-voltage cabling only, available in a variety of mounting options

#### ACOUSTICAL

- Includes clips, assemblies and hangers
- Provide above T-bar support for troffers, fixtures, outlet boxes and conduit

#### DRY WALL

- Low-voltage mounting brackets, old world box mount and retainers
- Fasten electrical boxes to dry wall, rather than mounting to stud



#### BEAM / PURLIN

- Beam clamps and purlin clips for attaching conduit and boxes to beams and vertical and angled flanges
- Screw-on, hammer-on and tool-less mounting options
- Various load capacities for multiple uses and needs

#### CABLE / CONDUIT

- Clips and clamps to support cable and conduit to most structures
- Options include snap-close, push-fit and flexible clips
- Brackets options to space, support and attach conduit

#### STUD WALL

- Brackets offer easy installation with screw-on options for attaching electrical boxes to wood and metal studs
- Supports are available in varied fittings, including push-fit, snap-on and screw-on
- Press-on nail plate and metal stud grommets to protect building infrastructure and cable building structure

The StrongHold Supports and Fasteners Line is an ideal solution to reduce time and the cost associated with the electrical infrastructure construction process.

**For more information on the Supports and Fasteners line or other StrongHold products visit [www.panduit.com](http://www.panduit.com)**